

The Anatolian Journal of Cardiology

Anatol J Cardiol • Volume 17 • Issue 2 • February 2017

Editor-in-Chief

Bilgin Timuralp

Editor

Zeki Öngen

Advisory Board of This Issue

Yakup Alsancak

Hakan Altay

Halil Ataş

Uğur Canpolat

Cahid Civelek

Jelena Celutkiene

Mehmet Akif Çakar

Nevzat Erdil

Ufuk Eryılmaz

Mariana Floria

Ekrem Güler

Ali Hosseinsabet

Barış İkitimur

Sivaraman Jayaraman

Yo Han Jeong

Oğuz Karahan

Yavuzer Koza

Serdar Kula

Özge Kurmuş

Sevda Tanrıkulu Küçük

Peter Macfarlane

Nazan Özbarlas

Emmanouil Petrou

Piero Portincasa

Ruth Everett-Thomas

Hüseyin Uğur Yazıcı

Meta Analysis

Contact force technology and the recurrence and major complications of atrial fibrillation ablation
 Xianhui Zhou, et al; Urumqi, Xinjiang-*People's Republic of China*

Original Investigations

2013 ACC/AHA and 2011 ESC dyslipidemias guidelines for prevention in a Turkish cohort
 Mustafa Yılmaz, et al; Ankara-*Turkey*

Low acylation stimulating protein and cardiometabolic disorders—secondary to autoimmune activation?
 Altan Onat, et al; Istanbul-*Turkey*

Post-discharge heart failure monitoring program in Turkey: Hit-Point
 Yüksel Çavuşoğlu, et al; Eskişehir-*Turkey*

High on-treatment platelet reactivity: risk factors and 5-year outcomes in acute myocardial infarction
 Martin Jakl, et al; Sokolska-*Czech Republic*

Serum adropin and burden of coronary disease in non-ST elevation myocardial infarction
 Ahmet Göktuğ Ertem, et al; Ankara-*Turkey*

Treatment-associated change of apelin in hypertension and its relationship with diastolic function
 Sadettin Selçuk Baysal, et al; Ankara-*Turkey*

Investigation of the arterial stiffness and associated factors in familial Mediterranean fever
 Mustafa Çakar, et al; Ankara-*Turkey*

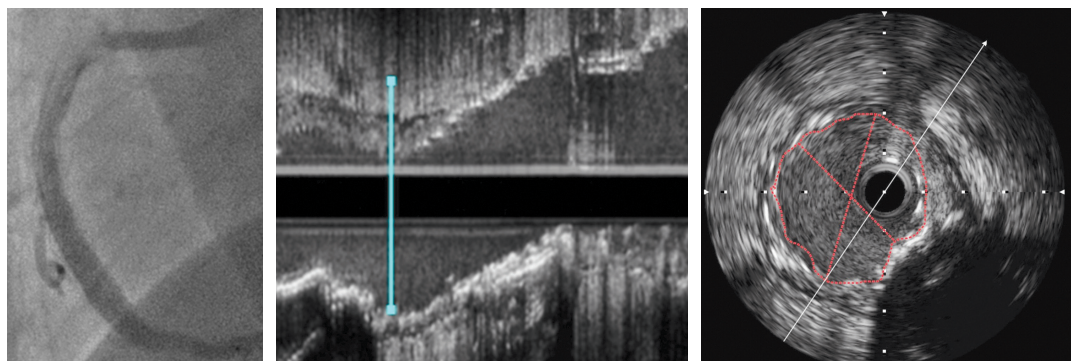
Editorial comment: Vascular risk in familial Mediterranean fever
 Alexander J. Rodríguez; Clayton-*Australia*

Cardiopulmonary resuscitation knowledge among nursing students: a questionnaire study
 Mutlu Vural, et al; İstanbul-*Turkey*

Editorial comment: Cardiopulmonary resuscitation knowledge among nursing students
 Ruth Everett-Thomas; Miami, Florida-*USA*

Transcatheter closure of PDA in premature babies less than 2 kg
 Nazmi Narin, et al; Kayseri-*Turkey*

Page: 156



CONTENTS**EDITORIAL**

- Thoughts provoked by this issue 81
Zeki Öngen; *Istanbul-Turkey*

META ANALYSIS

- Impact of contact force technology on reducing the recurrence and major complications of atrial fibrillation ablation: A systematic review and meta-analysis 82
Xianhui Zhou, Wenkui Lv, Wenhui Zhang, Yuanzheng Ye, Yaodong Li, Qina Zhou, Qiang Xing, Jianghua Zhang, Yanmei Lu, Ling Zhang, Hongli Wang, Wen Qin, Baopeng Tang; *Urumqi, Xinjiang-People's Republic of China*

ORIGINAL INVESTIGATIONS

- Comparison of application of 2013 ACC/AHA guideline and 2011 European Society of Cardiology guideline for the management of dyslipidemias for primary prevention in a Turkish cohort 92
Mustafa Yılmaz, İlyas Atar, Senem Hasırcı, Kadirhan Akyol, Abdullah Tekin, Emir Karaçağlar, Orçun Çiftçi, Haldun Müderrisoğlu; *Adana, Gaziantep-Turkey*
- Low acylation stimulating protein levels are associated with cardiometabolic disorders—secondary to autoimmune activation? 97
Altan Onat, Servet Altay, Murat Yüksel, Yusuf Karadeniz, Günay Can, Hüsnüye Yüksel, Evin Ademoğlu; *Istanbul, Edirne, Diyarbakır, Erzurum-Turkey*
- Post-discharge heart failure monitoring program in Turkey: Hit-Point 107
Yüksel Çavuşoğlu, Mehdi Zoghi, Mehmet Eren, Evin Bozçalı, Güliz Kozdağ, Tunay Şentürk, Güray Alicik, Korhan Soylu, İbrahim Sarı, Rida Berilgen, Ahmet Temizhan, Erkan Gençer, Ahmet Lütfü Orhan, Veli Polat, Aysel Aydın Kaderli, Meryem Aktoz, Halit Zengin, Mehmet Aksoy, Mehmet Timur Selçuk, Oktay Ergene, Özlem Soran; *Eskişehir, İzmir, İstanbul, Urfa, Kocaeli, Bursa, Edirne, Samsun, Gaziantep, Ankara-Turkey, Pittsburgh, PA-USA*
- High on-treatment platelet reactivity: risk factors and 5-year outcomes in patients with acute myocardial infarction 113
Martin Jakl, Robert Sevcik, Ilona Fatorova, Jan M. Horacek, Radek Pudil; *Hradec Kralove-Czech Republic; Trollhättan-Sweden*
- Association between serum adropin level and burden of coronary artery disease in patients with non-ST elevation myocardial infarction 119
Ahmet Göktuğ Ertem, Sefa Ünal, Tolga Han Efe, Burak Açar, Çağrı Yayla, Mevlüt Serdar Kuyumcu, Özgür Kırbaş, Cemal Köseoğlu, Mehmet Kadri Akboğa, Kadriye Gayretli Yayla, Serkan Gökaslan, Sinan Aydoğdu; *Ankara, Tokat-Turkey*
- Treatment-associated change in apelin concentration in patients with hypertension and its relationship with left ventricular diastolic function 125
Sadettin Selçuk Baysal, Bahar Pirat, Kaan Okyay, Uğur Abbas Bal, Melek Zekiye Uluçam, Derya Öztuna, Haldun Müderrisoğlu; *Ankara-Turkey*
- Investigation of the arterial stiffness and associated factors in patients with familial Mediterranean fever 132
Mustafa Çakar, Muharrem Akhan, Tolga Doğan, Gürhan Taşkın, Kadir Öztürk, Muhammet Çınar, Erol Arslan, Sedat Yılmaz; *Ankara-Turkey*
- Editorial Comment: Vascular risk in familial Mediterranean fever 139
Alexander J. Rodriguez; *Clayton-Australia*
- Cardiopulmonary resuscitation knowledge among nursing students: a questionnaire study 140
Mutlu Vural, Mustafa Feridun Koşar, Orhan Kerimoğlu, Fatih Kızkapan, Serdar Kahyaoğlu, Sevil Tuğrul, Hasan Burak İşleyen; *Istanbul-Turkey*
- Editorial Comment: Cardiopulmonary resuscitation knowledge among nursing students: a questionnaire-based study 146
Ruth Everett-Thomas; *Miami, Florida-USA*

CONTENTS

- ▶ Transcatheter closure of PDA in premature babies less than 2 kg 147
Nazmi Narin, Özge Pamukçu, Ali Baykan, Mustafa Argun, Abdullah Özyurt, Adnan Bayram, Kazım Üzüm; Kayseri-Turkey
- INVITED EDITORIAL**
- ▶ Ampicillin/sulbactam-induced Kounis syndrome with cardiogenic shock 154
Nicholas G. Kounis, Ioanna Koniari; Patras-Greece
- CASE REPORT**
- ▶ Successful removal of entrapped Burr with sheathless guiding during stent rotablation 156
Zoltán Ruzsa, Árpád Lux, István Ferenc Édes, Levente Molnár, Béla Merkely; Budapest, Kecskemét-Hungary
- PUZZLE**
- ▶ What is your diagnosis? 158
Semi Öztürk, Muhsin Kalyoncuoğlu, Gündüz Durmuş; İstanbul-Turkey
- LETTERS TO THE EDITOR**
- ▶ Coronary-subclavian steal syndrome in a hemodialysis patient with ipsilateral subclavian artery occlusion and contralateral vertebral artery stenosis "Case Report" 159
Bülent Sartaş; İstanbul-Turkey
- ▶ Transcatheter aortic valve implantation in transapical access 160
Orhan Gökalp, Mehmet Senel Bademci, Yüksel Beşir, Hasan İner, Ali Gürbüz; İzmir, Ordu-Turkey
- ▶ Evaluation of heart rate recovery index in heavy smokers 161
Fatih Kahraman; Düzce-Turkey
- ▶ Analysis of platelet-to-lymphocyte ratio requires methodological consideration 162
Mustafa Gülgün; Ankara-Turkey
- ▶ Sports, energy drinks, and sudden cardiac death: stimulant cardiac syndrome 163
Erdem Kaşıkçıoğlu; İstanbul-Turkey
- ▶ Quadricuspid aortic valve with D (Rho) antigen negativity: a novel case report 164
Jun Gu, Chaoyi Qin, Zhong Wu; Chengdu-China
- PUZZLE - ANSWER**
- ▶ What is your diagnosis? 165
Semi Öztürk, Muhsin Kalyoncuoğlu, Gündüz Durmuş; İstanbul-Turkey
- E-PAGE ORIGINAL IMAGES**
- ▶ Balloon-assisted tracking for challenging transradial percutaneous coronary intervention  E-1
Maria Agelaki, Michael Koutouzis; Athens-Greece