

Baş Editör / Editor-in-Chief
Bilgin Timuralp

Editör / Editor
Gulmira Kudaiberdieva

Bu Sayının Yayın Danışmanları
Advisory Board of This Issue

Emel Altekin
A. Ata Alturfan
Charalambos Antoniadis
Harun Arbatlı
Özgür Avcı
Hala Mahfouz Badaran
Nicoletta Botto
Özlem Giray Bozkaya
Zehra Buğra
Claudio Maria Bussadori
Cenk Can
Michael L. Chuang
Erkan Cüre
Seden Çelik
Michel Daudon
Patrick J. Devine
Mehmet Tolga Dođru
Serkan Durdu
Dursun Dursunođlu
Rasim Enar
Ertuđrul Ercan
Serpil Erođlu
Alaor Santos Filho
Anna Gluba
Onur Göksele
Taner Gören
Kamile Gül
Mete Gürsoy
Yalcın Hacıođlu
Melvin R. Hayden
Serhat Işık
Atıla İyisoy
Aysel Aydın Kaderli
Ahmet Karabulut
Teoman Kılıç
Orhan Maden
Robert W. Mahley
Jussi Mikkelsen
Wail Nammias
Hans- Joachim Nesser
Kenneth Nichols
Enzo Nisoli
Utku Arman Örtün
Mehmet Özyayın
Beste Özben
Burak Pamukçu
Christos Pitsavos
Andre Rudolph
Fatma Sarıcaođlu
Nurten Sayar
Hatice Selçuk
Kazunori Shimada
Hatice Süt
İstemihan Tengiz
Pervin Topçuođlu
Ömer Toprak
Cemalettin Topuzlu
Renato De Vecchis
Fatih Yalçın
Şenol Yavuz
Can Yerebakan
Ayşe Yıldırım
Mehmet Yokuşođlu
Fulya Balaban Yücesan

Özgün Araştırmalar / Original Investigations

Sosyal eşitsizliklerin koroner kalp hastalığı risk etmenlerine etkisi
Effects of social inequalities on coronary heart disease risk factors
Hatice Giray Şimşek ve ark.; İzmir, Türkiye

Relationship between severity of coronary artery disease and apolipoprotein E gene polymorphism
Koroner arter hastalığı şiddetinin apolipoprotein E gen polimorfizmi ile ilişkisi
F. Demet Arslan İnce, et al.; Aksaray, İzmir, Türkiye

Beta-fibrinogen 455 G/A gene polymorphism and left atrial echo contrast in atrial fibrillation
Atrial fibrilasyonda beta-fibrinojen gen polimorfizmi ile sol atriyal eko-kontrast
Volkan Bozdemir, et al.; İzmir, Türkiye

The effect of Turkish bath on QT dispersion
Türk hamamının QT dispersiyonu üzerine etkisi
Mustafa Ünübol, et al.; Aydın, Türkiye

İntima-media kalınlığının endotel fonksiyonu ve sol ventrikül kütle indeksi ile ilişkisi
The relation of intima-media thickness with endothelial function and ventricular mass index
Hasan Korkmaz ve ark.; Elazığ, Türkiye

Cardiac valve function and adipokine in obese women treated with sibutramine
Sibutramin ile tedavi edilen obez kadınlarda kardiyak kapak fonksiyonu ve adipokin
Sefa Saraç, et al.; İzmir, Türkiye

Speckle tracking based myocardial velocities: our experience with a novel software
Benek izleme temelli miyokardiyal hızlar: Yeni bir yazılım ile olan deneyimlerimiz
Oben Baysan, et al.; Ankara, Türkiye

Akut miyokard infarktüsünde ortalama sistolik anüler velosite ve strain skor indeksi
Mean systolic annular velocity and strain score index in acute myocardial infarction
Ergün Barış Kaya ve ark.; Ankara, Türkiye

Longitudinal left ventricular function in mild-to-moderate hypertensive patients
Hafif ve orta derecede hipertansif hastalarda sol ventrikül longitudinal fonksiyonu
Dursun Atılğan, et al.; İstanbul, Türkiye

No-reflow phenomenon and serotonin in acute ST-elevation myocardial infarction
Akut ST-yükseklikli miyokard infarktüsünde no-reflow fenomeni ve serotonin
Ramazan Topsakal, et al.; Kayseri, Türkiye

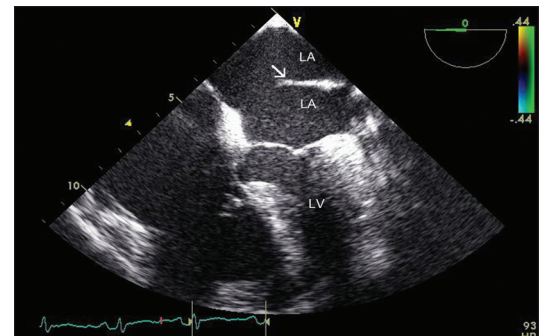
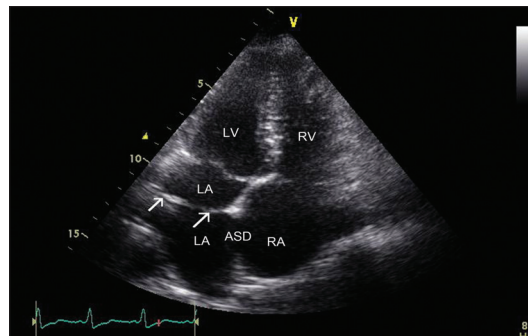
Fetal echocardiography in low- and high-risk pregnancies for congenital heart defects
Konjenital kalp hastalıkları için düşük ve yüksek riskli gebeliklerde fetal ekokardiyografi
Süheyla Özkutlu, et al.; Ankara, Türkiye

Derlemeler / Reviews

Disease of the Sultans: metabolic syndrome in Ottoman dynasty
Sultanların hastalığı: Osmanlı hanedanında metabolik sendrom
Selçuk Dağdelen, et al.; Ankara, Türkiye

Cardiovascular consequences of sleep apnea III - Impact of continuous positive airway pressure treatment
Uyku apnesinin kardiyovasküler sonuçları: III- Sürekli pozitif havayolu basınç tedavisinin etkisi
Yelda Turgut Çelen, et al.; Skövde, Gothenburg, Sweden

Sayfa/Page: E-10-11



Baş Editör / Editor-in-Chief**Bilgin Timuralp, Eskişehir, Türkiye****Editör / Editor****Gulmira Kudaiberdieva, Bishkek, Kyrgyzstan****Editör Yardımcıları / Associate Editors**

Adnan Abacı, Ankara, Türkiye
 Mehmet Bilge, Ankara, Türkiye
 Sadi Güleç, Ankara, Türkiye
 Barış İlerigelen, İstanbul, Türkiye
 Cihangir Kaymaz, İstanbul, Türkiye
 Sanem Nalbantgil, İzmir, Türkiye
 Yılmaz Nişancı, İstanbul, Türkiye

Kurtuluş Özdemir, Konya, Türkiye
 İnan Soydan, İzmir, Türkiye
 Ahmet Tulga Ulus, Ankara, Türkiye
 Ercan Tutar, Ankara, Türkiye
 Berrin Umman, İstanbul, Türkiye
 Mehdi Zoghi, İzmir, Türkiye

Baş Editör Danışmanı / Editor-in-Chief Consultant**Suna Kırac, Denizli, Türkiye****Biyoistatistik Baş Danışmanı / Senior Consultant in Biostatistics****Kazım Özdamar, Eskişehir, Türkiye****İstatistik Danışmanı / Statistical Consultant****İlker Ünal, Adana, Türkiye****Uluslararası Yayın Kurulu / International Editorial Board**

Kamil ADALET, İstanbul, Türkiye
 Ramazan AKDEMİR, Ankara, Türkiye
 Levent AKYÜREK, Göteborg, Sweden
 Necmi ATA, Eskişehir, Türkiye
 Mehmet ATEŞ, İzmir, Türkiye
 Saide AYTEKİN, İstanbul, Türkiye
 Vedat AYTEKİN, İstanbul, Türkiye
 Ljuba BACHAROVA, Bratislava, Slovak Republic
 Luiggi P. BADANO, Udine, Italy
 Gani BAJRAKTARİ, Prishtina, Kosovo
 Işık BAŞAR, İstanbul, Türkiye
 George A. BELLER, Charlottesville VA, USA
 Ahmet BİRAND, İstanbul, Türkiye
 Alparslan BİRDANE, Eskişehir, Türkiye
 William James BRAUN, Birmingham, UK
 Gerald David BUCKBERG, Los Angeles, CA, USA
 Cahid CİVELEK, St. Louis, MO, USA
 Nail ÇAĞLAR, Ankara, Türkiye
 Erdal ÇAVUŞOĞLU, New York, USA
 Yüksel ÇAVUŞOĞLU, Eskişehir, Türkiye
 Mehmet ÇİLİNGİROĞLU, Cincinnati, USA
 Vedat DAVUTOĞLU, Gaziantep, Türkiye
 Necmi DEĞER, Antalya, Türkiye
 Ubeydullah DELİGÖNÜL, Tyler TX, USA
 Ufuk DEMİRKILIÇ, Ankara, Türkiye
 Ertan DEMİRTAŞ, Ankara, Türkiye
 Ali Emin DENKTAŞ, Houston, TX, USA
 Melda DOLAN, St. Louis, USA
 Fırat DURU, Zurich, Switzerland
 Rasim ENAR, İstanbul, Türkiye
 Oktay ERAY, Antalya, Türkiye
 Ertuğrul ERCAN, Çanakkale, Türkiye
 Okan ERDOĞAN, İstanbul, Türkiye
 Ali ERGİN, Kayseri, Türkiye
 Çetin EROL, Ankara, Türkiye
 Ali Serdar FAK, İstanbul, Türkiye
 Ali GHOLAMRAZED, Tahrán, İran
 Hasan GÖK, Konya, Türkiye
 Mustafa GÖKÇE, Trabzon, Türkiye
 Ömer GÖKTEKİN, Eskişehir, Türkiye
 Özhan GÖLDELİ, İzmir, Türkiye

Bülent GÖRENEK, Eskişehir, Türkiye
 Sema GÜNERİ, İzmir, Türkiye
 Özen GÜVEN, İstanbul, Türkiye
 Deniz GÜZELSOY, İstanbul, Türkiye
 Masayasu HIRAOKA, Tokyo, Japan
 Coşkun İKİZLER, Ankara, Türkiye
 Murat İKİZLER, Eskişehir, Türkiye
 Gökhan İPEK, İstanbul, Türkiye
 Erkan İRİZ, Ankara, Türkiye
 Diwakar JAIN, Philadelphia, USA
 Charles JAZRA, Bawchrieh, Lebanon
 Göksel KAHRAMAN, Kocaeli, Türkiye
 Mehmet KAPLAN, İstanbul, Türkiye
 Hayrettin KARAEREN, Ankara, Türkiye
 Sezer KARCİER, İstanbul, Türkiye
 Erdem KAŞIKÇIOĞLU, İstanbul, Türkiye
 Sırrı KES, Ankara, Türkiye
 Mustafa KILIÇ, Denizli, Türkiye
 Serdar KULA, Ankara, Türkiye
 Ethem KUMBAY, Bursa, Türkiye
 Akira KURİTA, Tokyo, Japan
 Nezih KÜÇÜKARSLAN, Ankara, Türkiye
 Serdar KÜÇÜKOĞLU, İstanbul, Türkiye
 Hakan KÜLTÜRSAY, İzmir, Türkiye
 Byung-Boong LEE, Reston, VA, USA
 Samuel LEVY, Marseille, France
 Jason M. LAZAR, New York, USA
 Peter MACFARLANE, Renfrewshire, Scotland
 Robert W. MAHLEY, San Francisco, CA, USA
 G.B. John MANCINI, Vancouver BC, Canada
 Matti MÄNTTÄRI, Helsinki, Finland
 Franz H. MESSERLI, New York, USA
 Haldun MÜDERRİSOĞLU, Ankara, Türkiye
 İstemi NALBANTGİL, İzmir, Türkiye
 Navin C. NANDA, Birmingham, AL, USA
 Leonid B. NAJMOV, Beer-Sheva, Israel
 Tuğrul OKAY, İstanbul, Türkiye
 Altan ONAT, İstanbul, Türkiye
 Derviş ORAL, Ankara, Türkiye
 Hakan ORAL, Ann Arbor MI, USA
 M. Remzi ÖNDER, İzmir, Türkiye

Zeki ÖNGEN, İstanbul, Türkiye
 Necla ÖZER, Ankara, Türkiye
 Mehmet Bülent ÖZİN, Ankara, Türkiye
 Mehmet ÖZKAN, İstanbul, Türkiye
 Süheyla ÖZKUTLU, Ankara, Türkiye
 Azmi ÖZLER, İstanbul, Türkiye
 Ferhan ÖZMEN, Ankara, Türkiye
 Önal ÖZSARUHAN, İstanbul, Türkiye
 Ahmet Fatih ÖZYAZICIOĞLU, Bursa, Türkiye
 Sotirios N. PRAPAS, Athens, Greece
 Vedat SANSOY, İstanbul, Türkiye
 Muhammed SARIC, New Jersey, USA
 Murat SEZER, İstanbul, Türkiye
 Mark V. SHERRID, New York, USA
 Horst SIEVERT, Frankfurt, Germany
 Hülki Meltem SÖNMEZ, Aydın, Türkiye
 Richard SUTTON, London, UK
 Ahmet ŞAŞMAZEL, İstanbul, Türkiye
 Hüseyin ŞENOCAK, Erzurum, Türkiye
 Kohji TAMURA, Yamanashi, Japan
 Zeynep TARTAN, İstanbul, Türkiye
 Oğuz TAŞDEMİR, Ankara, Türkiye
 Ahmet TEMİZHAN, Ankara, Türkiye
 S. Lale TOKGÖZÖĞLU, Ankara, Türkiye
 Oktay TUTAREL, Hannover, Germany
 Murat TUZCU, Cleveland OH, USA
 Volkan TUZCU, Arkansas, USA
 Sabahattin UMMAN, İstanbul, Türkiye
 Dilek URAL, Kocaeli, Türkiye
 Ahmet ÜNALIR, Eskişehir, Türkiye
 Marc A. VOS, Utrecht, NL
 Kerem VURAL, Ankara, Türkiye
 Galen WAGNER, Durham, NC, USA
 Hein WELLENS, Maastricht, NL
 Cevat YAKUT, İstanbul, Türkiye
 Nuran YAZICIOĞLU, İstanbul, Türkiye
 Murat YEŞİL, İzmir, Türkiye
 Remzi YILMAZ, Şanlıurfa, Türkiye
 Kiyoshi YOSHIDA, Okayama, Japan
 Mehmet YOKUŞOĞLU, Ankara, Türkiye

**Yayınevi / Publisher**

İmtiyaz Sahibi ve Sorumlu Yazı İşleri Müdürü:

İbrahim Kara

Adres: Kızılelma cad. 5/3 34096 Fındıkzade-İstanbul

Tel: 0212 589 00 53 Fax: 0212 589 00 94

E-mail: info@avesyayincilik.com

Baskı: Görsel Dizayn Ofset Matbaacılık Tic. Ltd. Şti. 0212 671 91 00

Basım Tarihi : Haziran 2010

Yazı İşleri (Eskişehir)

Baş Editör Ofis Asistanları: Betül Tuntaş, Betül Celik

Yazışma Adresi: Kızılelma cad.

5/3 34096 Fındıkzade-İstanbul

Telefon: 0222 229 15 65 - 0533 966 48 67

Faks: 0222 229 15 85

E-mail: info@anakarder.com - btimur@ogu.edu.tr

Yayın Türü: Yerel Süreli Yayın

ISSN 1302-8723



Anadolu Kardiyoloji Dergisi Eskişehir Osmangazi
 Üniversitesi (ESOGU) tarafından kısmen desteklenmektedir.
 The Anatolian Journal of Cardiology is partly supported
 by University of Eskişehir Osmangazi (ESOGU).

ESKİŞEHİR OSMANGAZI ÜNİVERSİTESİ
 MEŞELİK KAMPÜSÜ 26480 ESKİŞEHİR
 Tel: +90 222 239 71 48
 Faks: +90 222 239 54 00

AMAÇ VE KAPSAM

Anadolu Kardiyoloji Dergisi kardiyoloji konulu, yayın dili hem Türkçe hem İngilizce olan, bağımsız ve önyargısız çift-kör hakemlik (peer-review) ilkelerine dayanan uluslararası, periyodik bir dergidir. Anadolu Kardiyoloji Dergisi Şubat, Nisan, Haziran, Ağustos, Ekim ve Aralık aylarında olmak üzere yılda 6 sayı ve 2 özel sayı çıkar.

Anadolu Kardiyoloji Dergisi'nin hedefi uluslararası düzeyde nitelikli, sürekli ve kardiyoloji konusunda özgün bir periyodik olarak klinik ve bilimsel açıdan en üst düzeyde orijinal araştırmaları yayınlamaktır. Bununla birlikte eğitim ile ilgili temel yenilikleri kapsayan derlemeler, editöryel kısa yazılar, olgu sunumları, orijinal görüntüler ve geniş kardiyoloji kesimlerinin konular hakkındaki deneyimlerini ve eleştirilerini içeren mektuplar ve sosyal kardiyoloji konulu yazılar yayınlamaktır.

Derginin hedef kitlesi kardiyoloji, çocuk kardiyoloji, kardiyovasküler cerrahi ve iç hastalıkları uzmanları, pratisyen hekimler ve tüm ilgili branşlardaki uzmanlardır. Derginin editöryel ve yayın işleyişi ICMJE ve COPE standartları çerçevesinde yürütülmektedir.

Anadolu Kardiyoloji Dergisi, Science Citation Index Expanded, Journal Citation Reports, Index Medicus/Medline/PubMed, EMBASE, Scopus, CINAHL, Gale/Cengage Learning, EBSCO, DOAJ, ProQuest, Tübitak/Ulakbim Türk Tıp Dizini ve Index Copernicus tarafından dizinlenmektedir.

Anadolu Kardiyoloji Dergisi'nin gelirleri abone ücretleri ve ticari firmalardan sağlanan reklamlardan oluşmaktadır.

Abone İşlemleri

Derginin tüm sayılarının tam metinlerine ücretsiz olarak www.anakarder.com adresinden ulaşılabilir. Basılı dergiye abone olmak isteyen kişiler web sayfasındaki abone formunu doldurmalı ve Yayınevine başvurmalıdır.

Yayınevi : AVES Yayıncılık-İbrahim Kara
Adres : Kızılelma cad. 5/3 34096
Fındıkzade-İstanbul
Tel. : 0212 589 00 53
Faks : 0212 589 00 94
Web sayfası : www.avesyayincilik.com
E-posta : info@avesyayincilik.com

Baskı İzinleri

Baskı izinleri için başvurular Baş Editör Ofisine yapılmalıdır.

Baş Editör : Prof. Dr. Bilgin Timuralp
Yazışma Adresi : Anadolu Kardiyoloji Dergisi
Kızılelma Cad. 5/3 34096 Fındıkzade-İstanbul
Tel. : 0222 229 15 65 - 0533 966 48 67
Faks : 0222 229 15 85
E-posta : info@anakarder.com
btimur@ogu.edu.tr

Reklam

Reklam ile ilgili başvurular Yayınevine yapılmalıdır.

Yayınevi : AVES Yayıncılık-İbrahim Kara
Adres : Kızılelma cad. 5/3 34096
Fındıkzade-İstanbul
Tel. : 0212 589 00 53
Faks : 0212 589 00 94
Web sayfası : www.avesyayincilik.com
E-posta : info@avesyayincilik.com

Yazarlara Bilgi

Yazarlara Bilgi dergi sayfalarında ve www.anakarder.com web sayfasında yayınlanmaktadır.

Materyal Sorumluluk Reddi

Anadolu Kardiyoloji Dergisi'nde yayınlanan tüm yazılarda görüş ve raporlar yazar(lar)ın görüşüdür ve Editör, editöryel kurul ya da yayıncının görüşü değildir; Editör, editöryel kurul ve yayıncı bu yazılar için herhangi bir sorumluluk kabul etmemektedir.

Dergimizde asitsiz kağıt kullanılmaktadır.

AIMS AND SCOPE

The Anatolian Journal of Cardiology is the double-blind peer-reviewed, Turkish and English languages international periodical on cardiology. The Anatolian Journal of Cardiology is published bimonthly (February, April, June, August, November and December) and 2 supplement issues are published annually.

The aim of the Anatolian Journal of Cardiology is to publish research articles on original issues of cardiology of the highest clinical and scientific quality at the international level. Along with this, it publishes reviews covering fundamental innovations and dealing with education, short editorial articles, original case reports and images, letters on experience relevant to broad cardiology issues and critiques, as well as issues on social cardiology.

The journal's audience includes cardiologists, pediatric cardiologists, cardiovascular surgeons, internal medicine specialists, practitioners and specialists of all relevant disciplines.

The journal's editorial and publishing process is adherent to standards of ICMJE and COPE.

The Anatolian Journal of Cardiology is indexed in Science Citation Index Expanded, Journal Citation Reports, Index Medicus/Medline/PubMed, EMBASE, Scopus, CINAHL, Gale/Cengage Learning, EBSCO, DOAJ, ProQuest, Tübitak/Ulakbim Türk Tıp Dizini and Index Copernicus databases.

The funding sources of the journal are advertising and subscription.

Subscription information

The access to all full-text issues of the journal is free at www.anakarder.com. To subscribe to the print issues of the journal please fill the subscription form at www.anakarder.com and contact the Publisher.

Publisher : AVES Yayıncılık-İbrahim Kara
Address : Kızılelma cad. 5/3 34096
Fındıkzade-İstanbul
Phone : +90 212 589 00 53
Fax : +90 212 589 00 94
Web page : www.avesyayincilik.com
E-mail : info@avesyayincilik.com

Permissions

Permissions for reproduction of materials published in the Anatolian Journal of Cardiology should be requested at Editor-in Chief Office:

Editor-in Chief : Prof. Dr. Bilgin Timuralp
Address for Correspondence : Anadolu Kardiyoloji Dergisi
Kızılelma Cad. 5/3 34096
Fındıkzade-İstanbul-Turkey
Phone : +90 222 229 15 65 - +90 533 966 48 67
Fax : +90 222 229 15 85
E-mail : info@anakarder.com
btimur@ogu.edu.tr

Advertising

For requests concerning advertising, please contact Publisher.

Publisher : AVES Yayıncılık-İbrahim Kara
Address : Kızılelma cad. 5/3 34096
Fındıkzade-İstanbul
Phone : +90 212 589 00 53
Fax : +90 212 589 00 94
Web page : www.avesyayincilik.com
E-mail : info@avesyayincilik.com

Instructions for authors

Instructions for authors are published in the journal pages and could be accessed at the web site of the journal - www.anakarder.com

Material Disclaimer

Statements or opinions expressed in the manuscripts published in the Anatolian Journal of Cardiology reflect the views of the author(s) and not the opinions of the editors, the editorial board and the publisher; the editors, the editorial board and the publisher disclaim any responsibility or liability for such materials.

The journal is printed on an acid-free paper.

INSTRUCTIONS TO AUTHORS

Editor-in-Chief: Professor Dr. Bilgin TİMURALP
Address of Correspondence: Anadolu Kardiyoloji Dergisi
Kızılelma Cad. 5/3 34096 Fındıklı-Zade-Istanbul / Turkey
Phone : +90 222 229 15 65 - +90 533 966 48 67
Fax : +90 222 229 15 85
Web page: www.anakarder.com
E-mail: btimur@ogu.edu.tr - info@anakarder.com

The Anatolian Journal of Cardiology publishes all articles on clinical cardiology with clear clinical relevance including experimental, fundamental and original clinical studies, postgraduate education on cardiology, investigations concerning especially Turkish public health, brief communications, case reports with relevant questions, answers and contributions, as well as enlightens thoughts on applied and changed relations between State institutions and physicians, news and developments from Turkish and European Societies of Cardiology. The referee's board that constitutes the selection of papers for publication by Editor consists of the elected experts of the journal and if necessary is selected from national and international authorities. The Anatolian Journal of Cardiology is published bimonthly (February, April, June, August, November and December) and 2 supplement issues are published annually.

Proper use of Turkish language is of special importance. Turkish Language Institution dictionary and orthography guide together with dictionary of cardiology terms published by Turkish Society of Cardiology should be taken as basic for literary language. Papers written in English language are particularly supported and encouraged.

An approval of research protocols by ethic committee in accordance with international agreements (Helsinki Declaration of 1975, revised 2002 - available at <http://www.vma.net/e/policy/b3.htm> - <http://www.vma.net/e/policy/b3.htm>), "Guide for the care and use of laboratory animals - www.nap.edu/catalog/5140.html) is required for experimental, clinical and drug studies.

The submission of a written document with institutional approval of Ethical Committee or equivalent confirming the research is performed in frame of general ethical rules will be required for all original research papers and some case reports beginning from 2010; on the other hand, for the time being, submission of a written document with Ethical Committee approval can facilitate process of consideration for publication of the manuscript and provide publishing priority.

Statements and suggestions published in manuscripts are under the authors responsibility and do not reflect convictions of editor and its associates.

Manuscripts are considered for review only in cases if they have not been published previously elsewhere or are not currently under consideration in other journals. Only those data presented at scientific meetings (notification of scientific conference of session is required) in form of preliminary results - abstracts that does not exceed 200 words could be accepted for consideration.

The signed statement of scientific contributions and responsibilities of all authors and statement on absence of conflict of interests are required.

The authors should acknowledge and provide information on grants, contracts or other financial support of the study provided by any foundations and institutions or firms.

The first author of the paper accepted for publication in AJC should be in consent of that editor can make corrections without changing the main text of the manuscript written either in Turkish or English languages.

The priority in acceptance of manuscripts for publication is given for original, of high scientific and academic quality manuscripts.

General Guidelines

Manuscripts and accompanying letters could be submitted to the Editor-in-Chief office through on-line manuscript submission system www.anadolukardiyologderg.com: you may find information at www.anakarder.com

Rejected manuscripts, except artwork usually are not returned. All manuscripts are reviewed by editor and at least three experts/referees. Proposal of names of three independent referees, which are aware of the study but are experts in the field of the study, by first author is important for the journal.

In case of previous submission of manuscripts for consideration to other journals, submission of manuscripts together with referee's reports is encouraged and will facilitate the consideration.

Before sending manuscript for review to referees board editor checks the adherence of the latter for general guidelines. Manuscripts that do not adhere required format will be returned causing unnecessary lost of time. The authors are asked to notify in cover letter that manuscript is designed appropriately with general guidelines and checked according with the **Author's Check List**.

Manuscripts format should be in accordance with Uniform Requirements for Manuscripts Submitted to Biomedical Journals: Writing and Editing for Biomedical Publication (available at <http://www.icmje.org/>).

Research Articles

1. Original research articles: Manuscript should not exceed 5000 words and should be accompanied by necessary number of tables and figures. Fifty references seem to be enough for confidence.

1.1 Title page is the first page and should be designed separately and include: full names of authors with their last academic degrees and manuscript title consisted of no more than 50 characters. These should be followed by complete descriptions of the department, institutions and city where the work was done. If the study was performed at different institutions it should be noted by symbols. Full address for correspondence contains full name of the first author or responsible authors, postal and e-mail addresses, phone and fax numbers. If manuscripts content has been presented before, time and place of the conference should be denoted.

1.2 Structured abstract, in Turkish language should not exceed 250 words and consists of the Objective, Methods, Results and Conclusion sections. No more than 6 keywords concordant with NLM MeSH vocabulary terms (available at <http://www.nlm.nih.gov/mesh/MBrowser.html>) must follow the structured abstract.

1.3 Structured abstract in English language written due to the above mentioned in part 2 rules.

1.4 Main text includes Introduction, Methods, Results, Discussion, and Conclusions sections. The latter part should briefly explain how doctors and patients could benefit from obtained results and how positive and negative conclusions of the study affect current knowledge. Main text should not exceed 8 pages. Finally, acknowledgements to persons who contribute to the study or assist in preparing article are done.

1.5 Statistical analysis should be performed in accordance with guidelines on reporting statistics in medical journals (Altman DG, Gore SM, Gardner MJ, Pocock SJ. Statistical guidelines for contributors to medical journals. Br Med J 1983; 7; 1489-93.). Describe software used for analysis. For parametric tests represent continuous variables as Mean±Standard Deviation, while for nonparametric tests represent data as Median and range (Minimum- Maximum) or Median and interquartile range (25th and 75th percentiles). Whenever complex analyses are used support the relative risk, odds or hazard ratios values by providing confidence intervals and p values.

1.6 References are numbered in order of citation in the main text and are typed on separate page in double space fashion. Personal communications, unpublished data, manuscripts under publication processing are cited in the main text in parenthesis, but not in list of references. Those abstracts had been published more than 2 years ago are not accepted as references.

Publications in kind of abstracts are noted in parenthesis (abstr.). Authors are responsible for accuracy of references.

Periodicals: Standard journal article: Abbreviations of journal titles should be done in accordance with journal abbreviations used in Index Medicus (for journal abbreviations consult List of Journals indexed for MEDLINE published annually by NLM at <http://www.nlm.nih.gov/tsd/serials/fj.html>). In case of six or less authors numbers list of all authors is required. If number of authors exceeds seven, list first 6 authors followed by et al. After list of authors, the full title of the article, journal title, year, volume and pages should follow.

Example: Muller C, Buttner HJ, Peterson J, Roskomun H. A randomized comparison of dlopidoğrel and aspirin versus ticlopidine and aspirin after placement of coronary artery stents. Circulation 2000; 101: 590-3.

Books: Chapter in a book: Sherry S. Detection of thrombi. In: Strauss HE, Pitt B, James AE, editors. Cardiovascular Medicine. St Louis: Mosby, 1974. p. 273-85.

Personal author(s): Cohn PE. Silent myocardial ischemia and infarction. 3rd ed. New York: Marcel Dekker, 1993.

Editor (s), compiler(s) as author: Norman IJ, Redfern SJ, editors. Mental health care for elderly people. New York: Churchill Livingstone; 1996.

Conference paper: Bengissson S, Sotheman BG. Enforcement of data protection, privacy and security in medical informatics. In: Lun KC, Degoutel P, Piemme TE, Rienhoff O, editors. MEDINFO 92. Proceedings of the 7th World Congress on Medical Informatics; 1992 Sept 6-10; Geneva, Switzerland. Amsterdam: North-Holland; 1992. P:1561-5.

Scientific or technical report: Smith P, Golladay K. Payment for durable medical equipment billed during skilled nursing facility stays. Final report. Dallas (TX) Dept. of Health and Human Services (US). Office of Evaluation and Inspections: 1994 Oct. Report No: HHSIGOE 169200860.

Dissertation: Kaplan SI. Post-hospital home health care: the elderly access and utilization (dissertation). St. Louis (MO): Washington Univ. 1995.

Article in electronic format: Morse SS. Factors in the emergence of infectious diseases. Emerg Infect Dis (serial online) 1995 Jan-Mar (cited 1996 June 5); 1(1): (24 screens). Available from: <http://www.cdc.gov/ncidod/dl/cid.htm>.

1.7. Diagrams, Tables and Figures: The figures and pictures should not contain the names of patients, doctors or institutions. Figures and pictures should be sent to the Editor-in-Chief office. They should be printed in separate from main text pages and numbered in order of citation in the text. The comments for tables, diagrams and figures are explained in a separate page with brief title. The number, first author's name and first words of the title are identified on backside. Top should be indicated by arrow. The font's size is usually 8. The sufficiently thick lines could be used while preparing of graphics, thus preventing the lost in the quality of graphics while decreasing their size. The largest appropriate and acceptable size of graphics is 8-9 cm or 16-17 cm in width. Figures should be done professionally and no gray colors be used. Used abbreviations should be explained further in the legend. Especially, the text of tables should be easily understandable and explanatory and should not repeat the data of the main text. The pictures/art work in black and white, grey colors are published without additional costs for authors. The color pictures/art work will be published at additional costs - please contact the Editor-in-Chief office and publisher.

Note: In addition to printed version of pictures in case reports and original images published in the journal the video/movie images and additional static images are published in the journal's web site www.anakarder.com

- The requirements for web site video/movie and static images are:
1. Static images should be submitted in one of the following formats: JPG, GIF, TIFF, BMP
 2. Video/movie images should be submitted in following formats: MPEG, VMF
 3. The maximum size of the file should be no more than 1 MB
 4. Video/movie images and figures/photographs should be sent without description of doctor's or patient's names, institutions and places of origin.
 5. The images could also be submitted on the CD to the Editor-in-Chief Office: Prof. Dr. Bilgin Timuralp, Kızılelma Cad. 5/3 34096 Fındıklı-Zade-Istanbul / Turkey Phone : +90 222 229 15 65 - +90 533 966 48 67 Fax : +90 222 229 15 85 E-mail: btimur@ogu.edu.tr - info@anakarder.com

The originality of tables and figures should be confirmed in the accompanying letter. In case of reproduction of tables and figures from other published sources, the appropriate citation should be done and the original source either in hardcopy or electronic (*.pdf) format along with the obtained permission for publication from Copyright owner (publisher, journal or author(s)) should be submitted to the Editor-in-Chief office.

The rules for title page, references, figures and tables are applicable for all types of manuscripts.

Special Parts

2. Reviews: are prepared by authors or by invited authors. This manuscript should contain the newest and final information on knowledge or topics, which are used in clinic, discussing and evaluating them. The author should be an expert on these topics or have references on these issues.

Unstructured abstract limited to 250 words is required. No more than 6 keywords concordant with NLM MeSH vocabulary terms (available at <http://www.nlm.nih.gov/mesh/MBrowser.html>) must follow the unstructured abstract. Word count is limited by 5000 and references number is limited by 50.

3. Editorials: Brief evaluation of published manuscripts by authority in the field of investigation other than referees of the journal. At the end of editorial usually clinical significance of the paper and short abstract is required.

4. Case reports: Interesting from diagnostic and educational point of view case reports concerning seldom, rare seen even by authorities, those one that usually diagnosed and managed with difficulties, and those cases that described usually missing in clinical practice applications are published. Articles with accompanying video/movie images have high priority for publishing. Case reports consist of introduction part without title; case report and discussion. Reference number is limited (no more than 10 and 700 words), and no abstract is required.

5. Scientific letter: The articles in form of preliminary report aimed to announce the new scientific thoughts and data are accepted for publication as scientific letters. The content of the scientific letter should not contain subheadings and is limited by 900 words. The number of references is limited by 10 and number of figures and tables should be no more than 2.

6. Letter to the Editor: Letter to the Editor is one of the main reasons for publication of this journal. It discusses the importance of the published manuscripts, their missing and deficient sites and usually is limited by 5 references and do not exceed 500 words. The author's name and address should follow the text.

7. Education: Knowledge utilized in clinical applications, included in education curriculum of academic level and confirmed by recent research results should be represented.

Unstructured abstract limited to 250 words is required. No more than 6 keywords concordant with NLM MeSH vocabulary terms (available at <http://www.nlm.nih.gov/mesh/MBrowser.html>) must follow the unstructured abstract. Word count is limited by 5000 and references number is limited by 50.

8. Original image: The impressive and rare images reflecting important findings based on clinical science, shedding light on fundamental mechanisms of cardiovascular diseases, emphasizing anomalies, enlightening new treatment methods are accepted for publication. Articles with accompanying video/movie images have high priority for publishing. The article including the title, text and figure legends (without references) should not exceed 250 words. Original images are prepared according with the above mentioned rules and are published in electronic only version.

İÇİNDEKİLER / CONTENTS

EDİTÖRDEN / EDITORIAL

- Vicdanla AKD arasında kalmak, yazı akışı 192
To stay between conscience and AKD, manuscript traffic
Bilgin Timuralp, Eskişehir, Türkiye

ÖZGÜN ARAŞTIRMALAR / ORIGINAL INVESTIGATIONS

- Sosyal eşitsizliklerin koroner kalp hastalığı risk etmenlerine etkisi: İzmir’de topluma dayalı, kesitsel bir çalışma 193
Effects of social inequalities on coronary heart disease risk factors: a population-based, cross-sectional study in İzmir
Hatice Giray Şimşek, Türkan Günay, Reyhan Uçku, İzmir, Türkiye
- Relationship between severity of coronary artery disease and apolipoprotein E gene polymorphism 202
Koroner arter hastalığı şiddetinin apolipoprotein E gen polimorfizmi ile ilişkisi
F. Demet Arslan İnce, Ayşenur Atay, Mehmet Köseoğlu, Murat Yeşil, Erdal Deveci, Aksaray, İzmir, Turkey
- The association of beta-fibrinogen 455 G/A gene polymorphism with left atrial thrombus and severe spontaneous echo contrast in atrial fibrillation 209
Atriyal fibrilasyonda beta-fibrinojen 455 G/A gen polimorfizmi ile sol atriyal trombüs ve ciddi spontan eko-kontrast arasındaki ilişki
Volkan Bozdemir, Önder Kırmlı, Bahri Akdeniz, Ayfer Ülgenalp, Abdurrahman Aslan, Veli Kala, Erdem Özel, Ömer Şenarlan, Özer Badak, Nezihi Barış, Sema Güneri, İzmir, Turkey
- The effect of Turkish bath on QT dispersion 216
Türk hamamının QT dispersiyonu üzerine etkisi
Mustafa Ünübol, Hulki Meltem Sönmez, Zeynep Güneş, Hilmiye Aksu, Aydın, Turkey
- Brakiyal arter intima-media kalınlığının endotel fonksiyonu ve sol ventrikül kütle indeksi ile ilişkisi 220
The relation of intima-media thickness with endothelial function and left ventricular mass index
Hasan Korkmaz, Mehmet Akbulut, Yılmaz Özbay, Mustafa Koç, Elazığ, Türkiye
- Cardiac valve evaluation and adipokine levels in obese women treated with sibutramine 226
Sibutramin ile tedavi edilen obez kadınlarda kardiyak kapak değerlendirilmesi ve adipokin düzeyleri
Sefa Saraç, Fulden Saraç, İzmir, Turkey
- Speckle tracking based myocardial velocities: our experience with novel software 233
Benek izleme temelli miyokardiyal hızlar: Yeni bir yazılım ile olan deneyimlerimiz
Oben Baysan, Mesut Akyol, Barış Bagan, Mehmet Yokuşoğlu, Yalçın Gökoğlan, Celal Genç, Ankara, Turkey
- Ortalama sistolik anüler velosite ve strain skor indeksi: Akut miyokart enfarktüsü hastalarının değerlendirilmesinde yeni ve invazif olmayan parametreler 239
Mean systolic annular velocity and strain score index: new and non-invasive parameters for the evaluation of acute myocardial infarction patients
Ergün Barış Kaya, Necla Özer, Hakan Aksoy, Onur Sinan Deveci, Erol Tülümen, Sercan Okutucu, Hikmet Yorgun, Enver Atalar, Serdar Aksöyek, Ferhan Özmen, Kenan Övünç, Sırrı Kes, Hilmi Özkutlu, Ankara, Türkiye

İÇİNDEKİLER / CONTENTS

- Assessment of longitudinal left ventricular systolic function by different echocardiographic modalities in patients with newly diagnosed mild-to-moderate hypertension 247
Yeni tanı konulmuş hafif ve orta derecede hipertansiyonu olan hastalarda sol ventrikül longitudinal fonksiyonunun değişik ekokardiyografik modaliteler ile değerlendirilmesi
Dursun Atılğan, Ahmet Kaya Bilge, İmran Onur, Burak Pamukçu, Mustafa Özcan, Kamil Adalet, İstanbul, Turkey
- Relationship between no-reflow phenomenon and serotonin levels in patients with acute ST-elevation myocardial infarction who underwent primary percutaneous intervention 253
Akut ST yükselmeli miyokart enfarktüsü nedeniyle primer perkütan girişim uygulanan hastalarda no-reflow fenomeni ile serotonin düzeyi arasındaki ilişki
Ramazan Topsakal, Mehmet G. Kaya, Ekrem Karakaya, Özgür Günebakmaz, Ali Doğan, M. Tuğrul İnanç, Bahadır Şarlı, İbrahim Özdoğru, Ali Ergin, Kayseri, Turkey
- Editöryel Yorum/Editorial Comment: Serotonin: another player in the complex pathogenesis of no-reflow phenomenon 260
"No-reflow" fenomeninin karmaşık patogeneğinde başka bir oyuncu: Serotonin
Giampaolo Niccoli, Cristina Spaziani, Rome, Italy
- The results of fetal echocardiography in a tertiary center and comparison of low- and high-risk pregnancies for fetal congenital heart defects 263
Üçüncü basamak bir merkezde fetal ekokardiyografi sonuçları ve fetal konjenital kalp hastalıkları için düşük ve yüksek risk gruplarının karşılaştırılması
Süheyla Özkutlu, Tülay Akça, Gülden Kafalı, Sinan Beksaç, Ankara, Turkey

DERLEMELER / REVIEWS

- Disease of the Sultans: metabolic syndrome in Ottoman dynasty 270
Sultanların hastalığı: Osmanlı hanedanında metabolik sendrom
Selçuk Dağdelen, Tomris Erbaş, Ankara, Turkey
- Cardiovascular consequences of sleep apnea: III-Impact of continuous positive airway pressure treatment 274
Uyku apnesinin kardiyovasküler sonuçları: III- Sürekli pozitif havayolu basınç tedavisinin etkisi
Yelda Turgut Çelen, Yüksel Peker, Skövde, Gothenburg, Sweden

BİLİMSEL MEKTUP / SCIENTIFIC LETTER

- Percutaneous transluminal angioplasty in pediatric patients with Takayasu arteritis: comparison of initial and long-term results of interventions on aorta and non-aortic vessels 281
Takayasu arteritli pediatrik hastalarda perkütan balon anjiyoplastisi: Aort ve non-aortik damarlarda erken ve uzun dönem girişim sonuçlarının karşılaştırılması
Füruzan Numan, Aylin Hasaneferendioğlu Bayrak, Murat Cantaşdemir, Harun Özer, Fatih Gülşen, İstanbul, Diyarbakır, Turkey

OLGU SUNUMLARI / CASE REPORTS


- Acute myocardial infarction in a young pregnant woman 285
Genç bir gebede akut miyokart infarktüsü
Murat Başkurt, Turhan Özkan, Alev Arat Özkan, Tevfik Gürmen, İstanbul, Turkey
- Hepatopulmonary syndrome associated with Budd-Chiari syndrome 286
Budd-Chiari sendromu ile birliktelik gösteren hepatopulmoner sendrom
F. Aşgenur Paç, Deniz N. Çağdaş, Meral Akdoğan, Neslihan İnci Zengin, Nurgül Şaşmaz, Ankara, Turkey
- Late onset LIMA first branch steal syndrome after coronary artery bypass surgery 288
Koroner arter baypas cerrahisi sonrası geç ortaya çıkan LIMA ilk dal çalma sendromu
Hakan Bingöl, Nurkay Katrancioğlu, Emre Özker, Celalettin Günay, Faruk Cingöz, Harun Tatar, Ankara, Turkey

İÇİNDEKİLER / CONTENTS

EDİTÖRE MEKTUPLAR / LETTERS TO THE EDITOR

- ▶ Nonfatal aplastic anemia associated with clopidogrel 291
Klopidogrel ile ilişkili ölümcül olmayan aplastik anemi
Ömer Uz, Ejder Kardeşoğlu, Mustafa Aparcı, Ömer Yiğiner, Zafer Işılak, Namık Özmen, İstanbul, Turkey
- ▶ A case of infective endocarditis, during pregnancy: should we keep the fetus? 291
Bir gebelik dönemi enfektif endokardit vakası: Fetusu korumalı mıyız?
Adem Güler, Mehmed A. Şahin, Nezih Küçükarslan, Mustafa Kürklüoğlu, Ata Kırılmaz, Harun Tatar, Ankara, İstanbul, Turkey
- ▶ Further expanding possibilities of successful stem cell transplantation in coronary artery disease/An alternative approach of stem cell delivery to myocardium: combined usage of antegrade coronary arterial infusion and retrograde venous obstruction 292
Koroner arter hastalığında başarılı kök hücre transplantasyonunun gelecekteki olasılıkları/Miyokard dokusuna kök hücre nakline alternatif bir yaklaşım: Antegrad koroner arteryel infüzyon ve retrograd venöz obstrüksiyonun birlikte kullanımı
Fuat Büyükbayrak, Oğuzhan Karatepe, Mete Alp, Armen Yuri Gasparyan, İstanbul, Turkey
- ▶ Japanese type cardiomyopathy associated with preexcitation/ Japanese type cardiomyopathy without deep negative T waves and with findings of preexcitation on ECG 294
Preeksitasyon ve Japon tipi kardiyomiyopati birlikteliği / EKG'de derin negatif T dalgaları izlenmeyen, preeksitasyon bulguları izlenen Japon tipi kardiyomiyopati
Okan Erdoğan, İstanbul, Turkey
- ▶ The beneficial effects of allopurinol in cardiology practice: decrease in uric acid and vascular oxidative stress/ The effects of lowering uric acid levels using allopurinol on markers of metabolic syndrome in end-stage renal disease patients: a pilot study 294
Allopurinolün kardiyoloji pratiğindeki faydalı etkileri: Ürik asitte ve vasküler oksidatif streste azalma/ Ürik asit seviyelerinin allopurinol ile azaltılmasının son dönem böbrek hastalarındaki metabolik sendrom belirleyicilerine etkisi: Pilot çalışma
Ömer Yiğiner, Fatih Özçelik, Mustafa Aparcı, Zafer Işılak, Ömer Uz, İstanbul, Turkey

E-SAYFA ÖZGÜN GÖRÜNTÜLER / E-PAGE ORIGINAL IMAGES

- ▶ Mitral regurgitation due to a hydatid cyst located in the left ventricular papillary muscle E-10
Sol ventrikül papiller adalesine yerleşen kist hidatike bağlı mitral yetersizlik
Özgül Uçar, Hülya Çiçekçioğlu, Bora Demirçelik, Sinan Aydoğdu, Ankara, Turkey
- ▶ A case of incomplete cor triatriatum sinister associated with large secundum atrial septal defect in an adult patient E-10
Erişkin bir hastada büyük atriyal septal defekt ile ilişkili inkomplet kor triatriyatım sinister olgusu 
Şakir Arslan, Fuat Gündoğdu, M. Emin Kalkan, Erzurum, Turkey
- ▶ Renovascular hypertension in a child with Marfan syndrome E-11
Marfan sendromlu bir çocukta renovasküler hipertansiyon
Mahmut Çivilibal, Salim Çalışkan, Furuzan Numan, Safa Barış, Durmuş Doğan, Özgür Kasapçopur, Lale Sever, Murat Cantaşdemir, Nil Arısoy, İstanbul, Turkey
- ▶ Anomalous origin of the right coronary artery from the pulmonary artery in an asymptomatic child E-12
Asemptomatik bir çocukta pulmoner arterden çıkan anomal sağ koroner arter 
Abdullah Erdem, Zübeyir Kılıç, Ali Rıza Karacı, Celal Akdeniz, Ahmet Çelebi, İstanbul, Eskişehir, Turkey
- ▶ Pseudoaneurysm of ascending aorta: a rare complication of mediastinitis following coronary artery bypass surgery E-12
Assandan aortanın psödoanevrizması: Koroner arter baypas cerrahisinden sonra gelişen mediyastinitin nadir bir komplikasyonu
Niyazi Görmüş, Hasan Hüseyin Telli, Tahir Yüksek, Konya, Turkey