

**Editor in Chief**

Bilgin Timuralp

**Editör**

Zeki Öngen

**Advisory Board of This Issue**

Sedat Abuşoğlu

Bahri Akdeniz

İdris Ardiç

Feyzullah Beşli

Barış Buğan

Orhan Saim Demirtürk

Murtaza Emre Durakoğlugil

Okan Erdoğan

Mehmet Eren

Mohamed Z. Gad

Ali Hosseinsabet

Haruo Hanawa

Terumasa Hayashi

Ayhan Kılıç

Teoman Kılıç

İbrahim Halil Kurt

Peter Macfarlane

Albina Nowak

Martin Orban

Kerem Özbek

Ying Shi

Rei Shibata

Jose E. Tanus-Santos

Ahmet Temizhan

Oktay Tutarel

Ceyhun Varım

Lianfeng Zhang

**Original Investigations**

Could plasma asymmetric dimethylarginine level be a novel predictor beyond the classic predictors of stent restenosis?

Uğur Abbas Bal et al.; Ankara-Turkey

The relationship between oxidative stress markers and visual evoked potentials in different hypertension models

Ayşe Yeşim Göçmen et al.; Antalya-Turkey

Relationship between brain natriuretic peptide, microalbuminuria, and contrast-induced nephropathy in patients with acute coronary syndrome

Esra Yıldız et al.; İstanbul-Turkey

Association of omentin Val109Asp polymorphism with coronary artery disease

Ümit Yörük et al.; Düzce-Turkey

Assessment of serum hepcidin levels in patients with non-ST elevation myocardial infarction

Burak Altun et al.; Çanakkale-Turkey

Effect of renal failure on N-terminal Pro-Brain natriuretic peptide in patients admitted to emergency department with acute dyspnea

Ayfer Çolak et al.; İzmir-Turkey

The effect of irritable bowel syndrome on carotid intima-media thickness, pulse wave velocity, and heart rate variability

Murtaza Emre Durakoğlugil et al.; Rize-Turkey

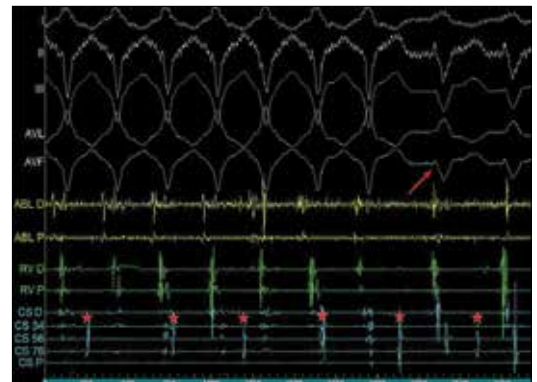
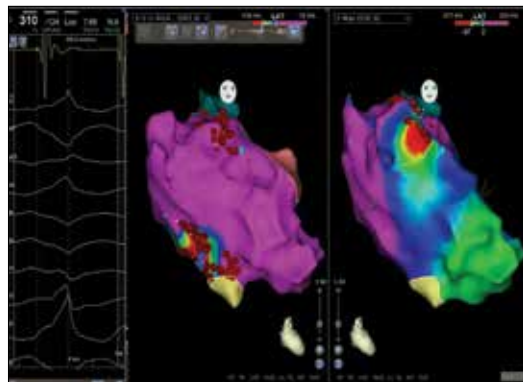
Circulating matrix metalloproteinases and tissue inhibitors of metalloproteinases levels in pediatric patients with congenital heart disease: Relationship to cardiac functions

Zübeyir Kılıç et al.; Eskişehir-Turkey

Long-term patency of autogenous saphenous veins vs. PTFE interposition graft for prosthetic hemodialysis access

Alper Uzun et al.; Ankara-Turkey

Page: E-16



**Editor in Chief**  
Bilgin Timuralp, *Eskişehir, Turkey*

**Editor**  
Zeki Öngen, *İstanbul, Turkey*

**Associate Editors**

Mehmet Bilge, *Ankara, Turkey*  
Alparslan Birdane, *Eskişehir, Turkey*  
Yüksel Çavuşoğlu, *Eskişehir, Turkey*  
Turgay Çelik, *Ankara, Turkey*  
Recep Demirbağ, *Şanlıurfa, Turkey*  
Sadi Güleç, *Ankara, Turkey*  
Mehmet Güngör Kaya, *Kayseri, Turkey*  
Mustafa Kılıçkap, *Ankara, Turkey*  
Sanem Nalbantgil, *İzmir, Turkey*  
Yılmaz Nişancı, *İstanbul, Turkey*  
Kurtuluş Özdemir, *Konya, Turkey*  
Necla Özer, *Ankara, Turkey*  
Ercan Tutar, *Ankara, Turkey*  
Ahmet Tulga Ulus, *Ankara, Turkey*  
Berrin Umman, *İstanbul, Turkey*  
Hüseyin Uyarel, *İstanbul, Turkey*

Mehdi Zoghi, *İzmir, Turkey*

**Editor in Chief Consultant**  
Suna Kırac, *Denizli, Turkey*

**Senior Consultant in Biostatistics**  
Kazım Özdamar, *Eskişehir, Turkey*

**Consultants in Biostatistics**

Canan Baydemir, *Kocaeli, Turkey*      Fezan Mutlu, *Eskişehir, Turkey*

**International Editorial Board**

Adnan Abacı, *Ankara, Turkey*  
Kamil Adalet, *İstanbul, Turkey*  
Ramazan Akdemir, *Sakarya, Turkey*  
Levent Akyürek, *Göteborg, Sweden*  
Necmi Ata, *Eskişehir, Turkey*  
Tayfun Aybek, *Ankara, Turkey*  
Saide Aytekin, *İstanbul, Turkey*  
Vedat Aytekin, *İstanbul, Turkey*  
Ljuba Bacharova, *Bratislava, Slovak Republic*  
Luiggi P. Badano, *Udine, Italy*  
Gani Bajraktari, *Prishtina, Kosovo*  
Işık Başar, *İstanbul, Turkey*  
George A. Beller, *Charlottesville, VA, USA*  
Ahmet Birand, *İstanbul, Turkey*  
Dirk L. Brutsaert, *Antwerp, Belgium*  
Gerald D. Buckberg, *Los Angeles, CA, USA*  
Cahid Civelek, *St. Louis, MO, USA*  
Ubeydullah Deligönül, *Tyler TX, USA*  
Ertan Demirtaş, *Ankara, Turkey*  
Ali Emin Denктаş, *Houston, TX, USA*  
Polychronis Dilaveris, *Athens, Greece*  
Firat Duru, *Zurich, Switzerland*  
Rasim Enar, *İstanbul, Turkey*  
Oktay Eray, *Antalya, Turkey*  
Ertuğrul Ercan, *İzmir, Turkey*  
Okan Erdoğan, *İstanbul, Turkey*  
Ali Ergin, *Kayseri, Turkey*

Çetin Erol, *Ankara, Turkey*  
Ali Serdar Fak, *İstanbul, Turkey*  
Roberto Ferrari, *Ferrara, Italy*  
Armen Y. Gasparyan, *West Midlands, UK*  
Ali Gholamrezanezhad, *Tehran, Iran*  
Hasan Gök, *Konya, Turkey*  
Bülent Görenek, *Eskişehir, Turkey*  
Sema Güneri, *İzmir, Turkey*  
Deniz Güzelsoy, *İstanbul, Turkey*  
Masayasu Hiraoka, *Tokyo, Japan*  
Coşkun İkizler, *Ankara, Turkey*  
Barış İlerigelen, *İstanbul, Turkey*  
Erkan İriz, *Ankara, Turkey*  
Diwakar Jain, *Philadelphia, USA*  
Charles Jazra, *Bawchrieh, Lebanon*  
Göksel Kahraman, *Kocaeli, Turkey*  
Mehmet Kaplan, *İstanbul, Turkey*  
Sezer Karcier, *İstanbul, Turkey*  
Erdem Kaşıkçıoğlu, *İstanbul, Turkey*  
Cihançir Kaymaz, *İstanbul, Turkey*  
Mustafa Kılıç, *Denizli, Turkey*  
Serdar Kula, *Ankara, Turkey*  
Serdar Küçükkoğlu, *İstanbul, Turkey*  
Hakan Kültürsay, *İzmir, Turkey*  
Samuel Levy, *Marseille, France*  
Jason M. Lazar, *New York, USA*

Peter Macfarlane, *Renfrewshire, Scotland*  
Robert W. Mahley, *San Francisco, CA, USA*  
G.B. John Mancini, *Vancouver BC, Canada*  
Matti Mänttari, *Helsinki, Finland*  
Barry J. Maron, *Minnesota, USA*  
Pascal Meier, *London, UK*  
Franz H. Messerli, *New York, USA*  
Haldun Müderrisoğlu, *Ankara, Turkey*  
İstem Nalbantgil, *İzmir, Turkey*  
Navin C. Nanda, *Birmingham, AL, USA*  
Altan Onat, *İstanbul, Turkey*  
Hakan Oral, *Ann Arbor, MI, USA*  
M. Remzi Önder, *İzmir, Turkey*  
Mehmet Bülent Özin, *Ankara, Turkey*  
Mehmet Özkan, *İstanbul, Turkey*  
Süheyla Özkutlu, *Ankara, Turkey*  
Azmi Özler, *İstanbul, Turkey*  
Ahmet Fatih Özyazıcıoğlu, *Bursa, Turkey*  
Sotirios N. Prapas, *Athens, Greece*  
Shahbudin Rahimtoola, *Los Angeles, CA, USA*  
Vedat Sansoy, *İstanbul, Turkey*  
Muhammed Saric, *New York, USA*  
Murat Sezer, *İstanbul, Turkey*  
Mark V. Sherrid, *New York, USA*  
Horst Sievert, *Frankfurt, Germany*  
Ilke Sipahi, *İstanbul, Turkey*

İnan Soydan, *İzmir, Turkey*  
Hulki Meltem Sönmez, *Aydın, Turkey*  
Richard Sutton, *Monaco, Monaco*  
Ahmet Şaşmaz, *İstanbul, Turkey*  
Zeynep Tartan, *İstanbul, Turkey*  
Oğuz Taşdemir, *Ankara, Turkey*  
Ahmet Temizhan, *Ankara, Turkey*  
Adam Timmis, *London, England*  
S. Lale Tokgözoğlu, *Ankara, Turkey*  
Oktay Tutarel, *Hannover, Germany*  
Murat Tuzcu, *Cleveland, OH, USA*  
Volkan Tuzcu, *İstanbul, Turkey*  
Taner Ulus, *Eskişehir, Turkey*  
Sabahattin Umman, *İstanbul, Turkey*  
Dilek Ural, *Kocaeli, Turkey*  
Ahmet Ünal, *Eskişehir, Turkey*  
Marc A. Vos, *Utrecht, Netherlands*  
Galen Wagner, *Durham, NC, USA*  
Hein Wellens, *Maastricht, Netherlands*  
Hüseyin Uğur Yazıcı, *Eskişehir, Turkey*  
Nuran Yazıcıoğlu, *İstanbul, Turkey*  
Murat Yeşil, *İzmir, Turkey*  
Remzi Yılmaz, *Antalya, Turkey*  
Kiyoshi Yoshida, *Okayama, Japan*  
Mehmet Yokuşoğlu, *Ankara, Turkey*  
Jose L. Zamorano, *Madrid, Spain*  
Wojciech Zareba, *New York, USA*



**Publisher**  
İbrahim KARA

**Publication Director**  
Ali ŞAHİN

**Deputy Publication Directors**  
Gökhan ÇİMEN  
Ayşegül BOYALI

**Publication Coordinators**  
Merve AKDEMİR SAĞLIK  
Leda BAŞGÜL  
Esra GÖRGÜLÜ  
Ebru MUTLU

**Sales Coordinator**  
Sinan Gökbörü BÜNCÜ

**Finance Coordinator**  
Veysel KARA

**Project Assistants**  
Hakan ERTEN  
Zeynep YAKIŞIRER  
Betül ÇİMEN

**Graphics Department**  
Ünal ÖZER  
Neslihan YAMAN  
Merve KURT

**Contact**  
Address : Büyükdere Cad. No: 105/9  
34394 Mecidiyeköy,  
Şişli, İstanbul  
Phone : +90 212 217 17 00  
Fax : +90 212 217 22 92  
E-mail : info@avesyayincilik.com

**Editor in Chief Office**

Phone : +90 222 229 15 65  
Fax : +90 222 229 15 85  
E-mail : info@anakarder.com  
btimur@ogu.edu.tr

**Assistants to the Editor in Chief**

Betül TUNTAŞ  
Bilge TUNALI



The Anatolian Journal of Cardiology is partly supported by University of Eskişehir Osmangazi (ESOGU).

ESKİŞEHİR OSMANGAZİ ÜNİVERSİTESİ  
MEŞELİK KAMPÜSÜ 26480 ESKİŞEHİR  
Phone: +90 222 239 71 48  
Fax: +90 222 239 54 00



İmtiyaz Sahibi ve Sorumlu Yazı İşleri Müdürü:  
Sadberk Lale Tokgözoğlu  
Yayın Türü : Yerel Süreli  
Basım Tarihi: Eylül 2014  
Basım Yeri: ADA Ofset Matbaacılık  
Tic. Ltd. Şti., Litros Yolu  
2. Matbaacılar S. E Blok No: (ZE2)  
1. Kat Topkapı, İstanbul  
Telefon : +90 212 567 12 42

**AIMS AND SCOPE**

The Anatolian Journal of Cardiology is the scientific, open access and official publication organ of the Turkish Society of Cardiology.

The Anatolian Journal of Cardiology is the double-blind peer-reviewed, published in only English language international periodical on cardiology. The journal is published 8 times per year (February, March, May, June, August, September, November and December).

The aim of the Anatolian Journal of Cardiology is to publish research articles on original issues of cardiology of the highest clinical and scientific quality at the international level. Along with this, it publishes reviews covering fundamental innovations and dealing with education, short editorial articles, original case reports and images, letters on experience relevant to broad cardiology issues and critiques, as well as issues on social cardiology.

The journal's audience includes cardiologists, pediatric cardiologists, cardiovascular surgeons, internal medicine specialists, practitioners and specialists of all relevant disciplines.

The journal's editorial and publishing process is adherent to standards of ICMJE, COPE, and HEART Group.

The Anatolian Journal of Cardiology is indexed in Science Citation Index Expanded, PubMed/MEDLINE, EMBASE, Scopus, CINAHL, Gale/Cengage Learning, EBSCO, DOAJ, ProQuest, Index Copernicus and Tübitak/ULAKBİM Turkish Medical Database.

Copyright Transfer, Conflict of Interest Declaration, Authorship Contributions and Instructions for Authors are published in the journal pages and could be accessed at the web site of the journal at [www.anakarder.com](http://www.anakarder.com)

Main financial support for the Anatolian Journal of Cardiology is provided by the Turkish Society of Cardiology. In addition, advertisements and announcements of products and services which are not contrary to the results of scientific studies are published in the journal to create revenue for the journal.

The access to all full-text issues of the journal is free at [www.anakarder.com](http://www.anakarder.com). To subscribe to the print issues of the journal, and permissions for reproduction of materials published, reprints and advertising in the Anatolian Journal of Cardiology should be requested at Turkish Society of Cardiology.

Statements or opinions expressed in the manuscripts published in the Anatolian Journal of Cardiology reflect the views of the author(s) and not the opinions of the Turkish Society of Cardiology, Editors, the Editorial Board and/or the Publisher; the Turkish Society of Cardiology, Editors, the Editorial Board and the Publisher disclaim any responsibility or liability for such materials.

The journal is printed on an acid-free paper.

Owner : Turkish Society of Cardiology  
Address : Çobançeşme Sanayi Cad., No:11, Nispetiye İstanbul, A Blok, No:47-48, 34196,  
Yenibosna, Bahçelievler, İstanbul, TURKEY  
Phone : +90 212 221 17 30 / +90 0212 221 17 38  
Fax : +90 212 221 17 54  
E-mail : [tkd@tkd.org.tr](mailto:tkd@tkd.org.tr)

Editor in Chief : Prof. Bilgin Timuralp  
Adres : ESOGÜ Tıp Fakültesi, Merkezi Derslikler, Kat:3, No:1, 26480, Meşelik, Eskişehir, TURKEY  
Telefon : +90 222 229 15 65 / +90 533 966 48 67  
Faks : +90 222 229 15 85  
E-posta : [info@anakarder.com](mailto:info@anakarder.com)

Publisher : AVES - İbrahim Kara  
Address : Büyükdere cad. 105/9, 34394, Mecidiyeköy, Şişli, İstanbul, TURKEY  
Phone : +90 212 217 17 00  
Fax : +90 212 217 22 92  
E-mail : [info@avesyayincilik.com](mailto:info@avesyayincilik.com)

## INSTRUCTIONS FOR AUTHORS

The Anatolian Journal of Cardiology is the scientific, open access and official publication organ of the Turkish Society of Cardiology.

The Anatolian Journal of Cardiology, being a double-blind peer-reviewed journal, publishes all articles on clinical cardiology with clear clinical relevance including experimental, fundamental and original clinical studies, postgraduate education on cardiology, investigations concerning especially Turkish public health, case reports, relevant letters with questions, answers and contributions, history of cardiology, publication and research ethics, as well as letters on expected, applied and changed relations between State institutions and physicians, works and developments of Turkish and World Societies of Cardiology. The referee's board that advises the selection of papers for publication by Editor consists of the elected advisory experts of the journal and is selected from independent national and international authorities. The Anatolian Journal of Cardiology is published 8 times per year, including February, March, May, June, August, September, November and December.

An approval of research protocols by Ethics Committee in accordance with international agreements (Helsinki Declaration of 1975, revised 2008 - available at [www.ub.edu](http://www.ub.edu), Guide for the care and use of laboratory animals - [www.grants.nih.gov](http://www.grants.nih.gov)) is required for experimental, clinical and drug studies.

The submission of a written document with institutional approval of Ethics Committee or equivalent confirming the research protocol, even some case reports, are performed in frame of general ethical rules, is mandatory.

The signed statement of scientific contributions and responsibilities of all authors and statement on absence of conflict of interests are required. (ICMJE Form for Disclosure of Potential Conflicts of Interest and Authorship Contributions forms are available at [www.anakardder.com](http://www.anakardder.com)). The journal's policy on publication and research ethics are in compliance with ICMJE, COPE and HEART Group rules.

The authors should acknowledge and provide information on grants, contracts or other financial support of the study provided by any foundations and institutions or firms.

The priority in acceptance of manuscripts for publication is given to original research manuscripts and reviews of high scientific and academic quality, in addition limited number of case reports and original images and other types of manuscripts are accepted for publication.

Statements and suggestions published in manuscripts are under the authors responsibility and do not reflect opinions of editors and their associates.

Manuscripts are considered for review only in cases if they have not been published previously elsewhere or are not currently under consideration in other journals. Only those data presented at scientific meetings (notification of scientific conference of session is required) in form of preliminary reports - abstracts that does not exceed 200 words - could be accepted for consideration.

The retraction requests of manuscripts, being under consideration and close to the final decision, without reasonable explanation will result in "reject" decision.

The first author of the paper accepted for publication in Anatolian Journal of Cardiology should be in consent of that editors could make corrections without changing the basic meaning of the text of the manuscript written in English language.

To be accepted for publication, it is required that manuscripts should be original and of high scientific and academic quality, with probability of being cited.

## General Guidelines

Manuscripts and accompanying letters could be submitted to the Editor in Chief office through on-line manuscript submission system [www.anakardder.com](http://www.anakardder.com) you may find information at [www.anakardder.com](http://www.anakardder.com)

Rejected manuscripts, except artwork usually are not returned. All manuscripts are reviewed by editor, editor's consultant, associate editors, statistical consultants and at least three experts/referees. Proposal of names of three independent referees, who are unaware of the study and had no relationship with authors or author's institutions, but are experts in the field of the study, by first author is important for the journal.

In case of previous submission of manuscripts for consideration to other journals, submission of manuscripts together with referee's reports is mandatory and will facilitate the consideration.

Before sending manuscript for review to referees editor checks the adherence of the manuscript's format to general guidelines. The spelling and grammar errors are required to be corrected before submission of manuscript. The revised versions of manuscripts should include incorporated revisions highlighted.

Manuscripts that do not comply with Instructions to Authors will not undergo peer-review.

Authors are required to submit the revision within 24 days, and the referee's evaluation period is limited by 21 days.

Manuscripts format should be in accordance with Uniform Requirements for Manuscripts Submitted to Biomedical Journals: Writing and Editing for Biomedical Publication (updated in December 2013 - <http://www.icmje.org/icmje-recommendations.pdf>).

The filled authorship contributions form must be submitted along with manuscript. The journal's rules on authorship contributions are in compliance with CSE (<http://www.councilscienceeditors.org>) and ICMJE (<http://www.icmje.org>) recommendations.

Original Investigations and Reviews should be presented according to the guidelines: randomized study - CONSORT, observational study - STROBE, study on diagnostic accuracy - STARO, systematic reviews and meta-analysis PRISMA, animal experimental studies - ARRIVE, nonrandomized behavioural and public health intervention studies - TREND.

## Research Articles

**1. Original research articles:** Manuscript should not exceed 5000 words and should be accompanied by necessary number of tables and figures. Fifty references seem to be enough for confidence.

**1.1 Title page is the first page of the manuscript**, which should be uploaded as separate WinWord file and include: full names of authors with their last academic degrees and manuscript title consisted of no more than 50 characters. These should be followed by complete descriptions of the department, institutions and city, country where the work was done. If the study was performed at different institutions it should be noted by symbols. Full address for correspondence contains full name of the first author or responsible authors, postal and e-mail addresses, phone and fax numbers. If manuscripts content has been presented before, time and place of the conference should be denoted.

**1.2 Structured abstract**, in Turkish language should not exceed 250 words and consists of the Objective, Methods, Results and Conclusion sections. No more than 6 keywords concordant with NLM MeSH vocabulary terms (available at <http://www.nlm.nih.gov>) must follow the structured abstract.

**1.3 Structured abstract** in English language written due to the above mentioned in part 1.2 rules.

**1.4 Main text includes Introduction, Methods, Results, Discussion, Study Limitations, Conclusions and References sections.** It would be useful to present Methods, Results and Discussion parts with subsections and subtitles. Main text should not exceed 5000 words and should be written in Times New Roman 12 font style. Finally, acknowledgement to persons who significantly contributed to the study or assisted in preparing article should be done appropriately. The letter note should be sent by e-mail or uploaded to the system in form of separate "Acknowledgement" WinWord file.

**1.5 Statistical analysis** should be performed in accordance with guidelines on reporting statistics in medical journals (Altman DG, Gore SM, Gardner MJ, Pocock SJ. Statistical guidelines for contributors to medical journals. *Br Med J* 1983; 7: 1489-93). Describe software used for analysis. For parametric tests represent continuous variables as Mean±Standard Deviation, while for nonparametric tests represent data as Median and range (Minimum- Maximum) or Median and interquartile range (25th and 75th percentiles). Whenever complex analyses are used support the relative risk, odds or hazard ratios values by providing confidence intervals and p values.

**1.6 References** are numbered in order of citation in the main text and are typed on separate page in double space fashion. Personal communications, unpublished data, manuscripts under publication processing are cited in the main text in parenthesis, but not in list of references. Those abstracts that had been published more than 2 years ago are not accepted as references.

Publications in kind of abstracts are noted in parenthesis (abstr.). Authors are responsible for accuracy of references.

### Periodicals:

Standard journal article: Abbreviations of journal titles should be done in accordance with journal abbreviations used in Index Medicus (for journal abbreviations consult List of Journals indexed for MEDLINE published annually by NLM at <http://www.nlm.nih.gov/tsd/serials/lj.html>). In case of six or less authors numbers list of all authors is required. In case of more authors exceeds seven, list first 6 authors followed by et al. A list of authors should be followed by the full title of the article, journal title, year, volume and page numbers.

**Example:** Muller C, Buttner HJ, Peterson J, Roskumun H. A randomized comparison of clopidogrel and aspirin versus ticlopidine and aspirin after placement of coronary artery stents. *Circulation* 2000; 101: 590-3.

### Books:

Chapter in a book: Sherry S. Detection of thrombi. In: Strauss HE, Pitt B, James AE, editors. *Cardiovascular Medicina*. St Louis: Mosby; 1974. p. 273-85.

Personal author(s): Cohn P. Silent myocardial ischemia and infarction. 3rd ed. New York: Marcel Dekker; 1993.

Editor(s), compiler(s) as author: Norman LJ, Redfern SJ, editors. *Mental health care for elderly people*. New York: Churchill Livingstone; 1996.

### Conference paper:

Bangsson S, Sotheman BG. Enforcement of data protection, privacy and security in medical informatics. In: Lun KC, Degoulet P, Plemme TE, Riehoff O, editors. *MEDINFO 92. Proceedings of the 7th World Congress on Medical Informatics; 1992 Sept 6-10, Geneva, Switzerland*. Amsterdam: North-Holland; 1992. P 1561-5.

### Scientific or technical report:

Smith P, Golladay K. Payment for durable medical equipment billed during skilled nursing facility stays. Final report. Dallas (TX) Dept. of Health and Human Services (US). Office of Evaluation and Inspections: 1994 Oct. Report No: HHSIGOE-189200860.

### Dissertation:

Kaplan SL. Post-hospital home health care: the elderly access and utilization (dissertation). St. Louis (MO): Washington Univ. 1995.

### Article in electronic format:

Morse SS. Factors in the emergence of infectious diseases. *Emerg Infect Dis* (serial online) 1995. Jan-Mar (cited 1996. June 5). 1(1): (24 screens). Available from: <http://www.cdc.gov/ncidod/diseases/cid.htm>

**1.7. Diagrams, Tables and Figures:** The figures and pictures should not contain the names of patients, doctors or institutions. Figures and pictures should be sent to the Editor in Chief office. They should be printed in separate from main text pages and numbered in order of citation in the text. The comments for tables, diagrams and figures are explained in a separate page with brief title. The sufficiently thick lines could be used while preparing of graphics, thus preventing the losses in the quality of graphics while decreasing their size. The largest appropriate and acceptable size of graphics is 8-9 cm or 16-17 cm in width. Figures should be done professionally and no gray colors be used. Used abbreviations should be explained in alphabetic order in the footnote of the table or figure's legend. Do not use Roman numbers in the numeration of tables and figures within text and their titles. The decimal numbers in the text, tables and figures should be separated by period. Especially, the text of tables should be easily understandable and explanatory and should not repeat the data presented in the main text.

**Note:** In addition to printed version of pictures in case reports and original images published in the journal the video/movie images and additional static images are published in the journal's web site [www.anakardder.com](http://www.anakardder.com)

The requirements for web site video/movie and static images are:

1. Static images should be submitted in one of the following formats: JPG, GIF, TIFF, BMP
2. Video/movie images should be submitted in following formats: MPEG, VMF
3. The maximum size of the file should be no more than 2 MB
4. Video/movie images and figures/photographs should be sent without description of doctor's or patient's names, institutions and places of origin.

The originality of tables and figures should be confirmed in the accompanying letter. In case of reproduction of tables and figures from other published sources, the appropriate citation should be done and the original source either in hardcopy or electronic (\*.pdf) format along with the obtained permission for publication from Copyright owner (publisher, journal or author(s)) should be submitted to the Editor in Chief office.

The rules for title page, references, figures and tables are applicable for all types of manuscripts.

## Special Parts

**2. Reviews:** are prepared by authors or by invited authors. This manuscript should contain the evaluation, discussion, analysis and synthesis of the newest and updated knowledge on topic, intended to be used in clinic, and should define the perspectives for further research. The author should be an expert and have cited published works in the area of interest.

**2.1 Unstructured abstract** limited to 250 words is required. No more than 6 keywords concordant with NLM MeSH vocabulary terms (available at <http://www.nlm.nih.gov/mesh/MBrowser.html>) must follow the unstructured abstract. Word count is limited by 500 and references number is limited by 50.

**3. Editorials:** This type of article is a brief evaluation of published manuscripts by authority in the field of investigation other than referees of the journal. At the end of editorial usually a summary on clinical significance of the study is required.

**4. Case reports:** Interesting from diagnostic and educational point of view case reports concerning seldom, rare seen even by authorities, those one that usually diagnosed and managed with difficulties, and those cases which description is usually missing in clinical practice applications are published. Limited number of case reports is published. Articles accompanied by video/movie images have high priority for publishing. Case reports consist of introduction, case report, discussion and conclusion parts. Reference and word count numbers are limited (no more than 10 and 700 words), and no abstract is required.

**5. Scientific letter:** The articles in form of preliminary report aimed to announce the new scientific thoughts and data are accepted for publication as scientific letters. The content of the scientific letter should not contain subheadings and is limited by 900 words. The number of references is limited by 10, and number of figures and tables should not exceed 2.

**6. Letter to the Editor:** Letter to the Editor is one of the main reasons for publication of this journal. It discusses the importance of the published manuscripts, their missing and deficient sites and usually is limited by 5 references and do not exceed 500 words.

**7. Education:** Knowledge utilized in clinical applications, included in education curriculum of academic level and confirmed by recent research results should be represented.

**7.1 Unstructured abstract** limited to 250 words is required. No more than 6 keywords concordant with NLM MeSH vocabulary terms (available at <http://www.nlm.nih.gov/mesh/MBrowser.html>) must follow the unstructured abstract. Word count is limited by 500 and references number is limited by 50.

**8. Original image:** The impressive and rare images reflecting important findings based on clinical science, shedding light on fundamental mechanisms of cardiovascular diseases, emphasizing anomalies, enlightening new treatment methods are accepted for publication. Articles with accompanying video/movie images have high priority for publishing. The article including the title, text and figure legends (without references) should not exceed 250 words. Original images are prepared according with the above-mentioned rules and are published in electronic only version.

**9. Historical notes:** The articles describing important historical events in cardiology (particularly for Turkey) and relevant disciplines, revealing new information on history of disease's diagnosis and treatment. The new historical findings should be the result of a proper research work on the topic.

The content of the historical notes should not contain subheadings and is limited by 900 words. The number of references is limited by 10.

**10. Publication Ethics:** The material published in this section of the journal includes articles providing the contemporary information on publication ethics and cases of ethics misconduct. The articles are limited by 900 words and the number of references is limited by 10. You can find COPE charts on publication ethics at [www.publicationethics.org](http://www.publicationethics.org)

Owner : Turkish Society of Cardiology  
Address : Çobançeşme Sanayi Cad., No:11, Nish İstanbul, A Blok, No:47-48, 34196, Yenibosna, Bahçeşehir, İstanbul, TÜRKİYE  
Phone : +90 212 221 17 30 / +90 212 221 17 38  
Fax : +90 212 221 17 54  
E-mail : [tkd@tkd.org.tr](mailto:tkd@tkd.org.tr)

Editor in Chief : Prof. Bilgin Timuralp  
Adres : ESOGÜ Tıp Fakültesi, Merkez Derslikler, Kat:3, No:1, 26480, Meşelik, Eskişehir, TÜRKİYE  
Telefon : +90 222 229 15 65 / +90 533 966 48 67  
Faks : +90 222 229 15 85  
E-posta : [info@anakardder.com](mailto:info@anakardder.com)

Publisher : AVES - İbrahim Kara  
Address : Büyükdere cad. 106/9, 34394, Mecidiyeköy, Şişli, İstanbul, TÜRKİYE  
Phone : +90 212 217 17 00  
Fax : +90 212 217 22 92  
E-mail : [info@avesyayincilik.com](mailto:info@avesyayincilik.com)

**CONTENTS****EDITORIAL**

- Evaluation of some original articles in this issue and the duels of authors and referees 489  
Bilgin Timuralp; Eskişehir-Turkey


**ORIGINAL INVESTIGATIONS**

- Could plasma asymmetric dimethylarginine level be a novel predictor beyond the classic predictors of stent restenosis? 491  
Uğur Abbas Bal, Aylin Yıldırım, Alp Aydınalp, Gamze Kaynar, Süleyman Kanyılmaz, Koza Murat, İbrahim Haldun Müderrisoğlu; Ankara-Turkey
- The relationship between oxidative stress markers and visual evoked potentials in different hypertension models 498  
Ayşe Yeşim Göçmen, Asuman Çelikkalek, Gülay Hacıoğlu, Nermin Tanık, Ayşel Açar, Piraye Yargıçoğlu, Saadet Gümüşlü; Yozgat, Antalya-Turkey
- Relationship between brain natriuretic peptide, microalbuminuria, and contrast-induced nephropathy in patients with acute coronary syndrome 505  
Esra Yıldız, Murat Köse, Gülden Yürüyen, Timur Selçuk Akpınar, Samim Emet, Enver Erdem, Tufan Tükek; İstanbul-Turkey
- Association of omentin Val109Asp polymorphism with coronary artery disease 511  
Ümit Yörüük, Kürşat Oğuz Yaykaşlı, Hakan Özhan, Ramazan Memişoğulları, Ahmet Karabacak, Serkan Bulur, Yusuf Aslantaş, Cengiz Başar, Ertuğrul Kaya; Düzce-Turkey
- Assessment of serum hepcidin levels in patients with non-ST elevation myocardial infarction 515  
Burak Altun, Mehzat Altun, Gürkan Acar, Metin Kılınc, Hakan Taşolar, Ahmet Küçük, Ahmet Temiz, Emine Gazi, Bahadır Kırılmaz; Çanakkale, Kahramanmaraş, Adıyaman, Şanlıurfa-Turkey
- Effect of renal failure on N-terminal Pro-Brain natriuretic peptide in patients admitted to emergency department with acute dyspnea 519  
Ayfer Çolak, Serap Çuhadar, Burcu Gölcük, Yalçın Gölcük, Öner Özdoğan, Işıl Çoker; İzmir, Manisa-Turkey
- The effect of irritable bowel syndrome on carotid intima-media thickness, pulse wave velocity, and heart rate variability 525  
Murtaza Emre Durakoğlugil, Aytun Çanga, Sinan Altan Kocaman, Remzi Adnan Akdoğan, Tuğba Durakoğlugil, Elif Ergül, Halil Rakıcı, Gökhan İlhan, Mehmet Bostan; Rize-Turkey
- Circulating matrix metalloproteinases and tissue inhibitors of metalloproteinases levels in pediatric patients with congenital heart disease: Relationship to cardiac functions 531  
Zübeyir Kılıç, Birsan Uçar, Gökmen Özdemir, Ömer Çolak, Cengiz Bal, Türkan Ertuğrul; Eskişehir, İstanbul-Turkey
- Long-term patency of autogenous saphenous veins vs. PTFE interposition graft for prosthetic hemodialysis access 542  
Alper Uzun, Adem İlkay Diken, Adnan Yalçınkaya, Onur Hanedan, Ömer Faruk Çiçek, Gökhan Lafçı, Garip Altıntaş, Kerim Çağlı; Ankara, Çorum, Gaziantep, Ankara-Turkey

**PUBLICATION ETHICS**

- Manuscript withdrawal and its possible consequences 547  
F.Suna Kırac; İzmir-Turkey

**CASE REPORTS**

- Left atrial spontaneous echo contrast and thrombus formation at septal puncture during percutaneous mitral valve repair with the MitraClip system of severe mitral regurgitation: a report of two cases 549  
Mehmet Bilge, Ayşe Saatçı Yaşar, Sina Ali, Recai Alemdar; Ankara-Turkey 
- Cryoablation of an anteroseptal accessory pathway through the jugular and subclavian veins in a patient with interruption of the inferior vena cava and azygos continuation 550  
Basri Amasyalı, Taner Şen, Ayhan Kılıç; Kütahya, Ankara-Turkey
- A rare cause of circulatory shock 553  
Cihan Altın, Arzu İzmir, Sevda Osmanoğlu, Esin Gezmiş, Afşin Sağduyu; İzmir-Turkey

**CONTENTS**

- ▶ Successful elimination of a Mahaim pathway using an 8 mm tip cryoablation catheter in a child 554  
Neslihan Kiplapınar, Celal Akdeniz, Yakup Ergül, Volkan Tuzcu; *Istanbul-Turkey*
- ▶ Near zero fluoroscopy radiation exposure during successful catheter ablation of atrial tachycardia from the non-coronary aortic cusp using 3-dimensional electroanatomic mapping system 556  
Ekrem Güler, Oğuz Karaca, Filiz Kızılırmak, Gamze Babür Güler, Fethi Kılıçaslan; *Istanbul-Turkey*

**LETTERS TO THE EDITOR**

- ▶ Unusual evolution of bulb-shaped echoluscent-structured nonobstructive prosthetic valve thrombosis under thrombolytic therapy 558  
Mustafa Ozan Gürsoy, Mehmet Özkan; *İzmir, Kars-Turkey*
- ▶ Fibrinolytic therapy in prosthetic valve thrombosis 559  
Fidel Manuel Caceres-Loriga; *Havana-Cuba*
- ▶ Relation between ABO blood groups and coronary lesion complexity in stable coronary artery disease 560  
Ahmet Göktuğ Ertem, Cemal Köseoğlu, Cenk Sarı, Telat Keleş, Tahir Durmaz, Engin Bozkurt; *Ankara-Turkey*
- ▶ Relation of ABO blood groups to coronary lesion complexity in patients with stable coronary artery disease 561  
Damir Fabijanic, Vedran Carevic, Sijetlana Karabuva, Mislav Radic; *Split-Croatia*
- ▶ Strict patient selection for renal sympathetic denervation may yield to more favorable results 562  
Ahmet Karabulut; *Istanbul-Turkey*
- ▶ Internal mammary artery as a graft in obese patients 564  
Yüksel Beşir, Orhan Gökalp, Börteçin Eygi, Ali Gürbüz; *İzmir-Turkey*
- ▶ Transcatheter closure of antegrade pulmonary blood flow with Amplatzer muscular VSD occluder after Fontan operation 565  
Tevfik Karagöz, Mustafa Gülgün, Metin Demircin, Hayrettin Hakan Aykan, Alper Akın; *Ankara-Turkey*

**MISCELLANEOUS**

- ▶ The impressions on the 11<sup>th</sup> International Scientific Summer School 2014 in Enez, Turkey 566  
Alpay Arıbaş, Aleksei Savelev; *Konya-Turkey; St.Petersburg-Russia*
- ▶ Thinking outside the bowl: The recruitment of systemic-to-pulmonary collaterals in chronic and severe pulmonary hypertension as an adaptive mechanism 570  
Cihangir Kaymaz; *Istanbul-Turkey*

**E-PAGE ORIGINAL IMAGE**

- ▶ Successful radiofrequency catheter ablation of two distinct ventricular tachycardias in a patient with three idiopathic left ventricular saccular aneurysms E-16  
Basri Amasyalı, Ersel Onrat; *Kütahya, Afyon-Turkey* 