

We present a patient with multiple bilateral coronary pulmonary fistulas in this report. The patient was investigated for the etiology of effort dyspnea and limited functional capacity. Electrocardiography was normal. Because of anterolateral myocardial ischemia on myocardial perfusion scintigraphy, coronary angiography was performed. Multiple and bilateral coronary-pulmonary artery fistulas were detected on coronary angiography. Two fistulas from the left coronary artery (LMCA), one fistula from the left anterior descending artery (LAD) and two fistulas from the right coronary artery (RCA) were mostly draining in to pulmonary artery (Fig. 1, 2). Atherosclerotic disease was not detected in the coronary arteries. Because of the presence of effort dyspnea, limited functional capacity and regional myocardial ischemia, we planned surgical ligation of the coronary-pulmonary fistulas in the course of the off- pump heart surgery. However, the patient refused the operation and was treated medically. We avoided nitrate therapy, which might possibly increase myocardial ischemia in case of coronary fistulas (5).

**Mutlu Vural, Özcan Rüzgar, Bayram Bağırta, Öcal Karabay\***  
Clinic of Cardiology, Avrupa Şafak Hospital  
\*Clinic of Cardiology, Avrasya Hospital, İstanbul, Turkey

## References

1. Serçelik A, Mavi A, Ayalp R, Peştamalcı T, Gümüşburun E, Batıraliev T. Congenital coronary artery fistulas in Turkish patients undergoing diagnostic cardiac angiography. *Int J Clin Pract* 2003; 57: 280-3.
2. Saito A, Ono M, Motomura N, Hirata Y, Morota T, Takamoto S. A surgical case of symptomatic coronary artery-pulmonary artery fistula. *Asian Cardiovasc Thorac Ann* 2006; 14: 4-5.
3. Auf der Maur C, Chatterjee T, Erne P. Percutaneous transcatheter closure of coronary-pulmonary artery fistula using polytetrafluoroethylene-covered graft stents. *J Invasive Cardiol* 2004;16: 386-8.
4. Said SA, van der Werf T. Dutch survey of coronary artery fistulas in adults: congenital solitary fistulas. *Int J Cardiol* 2006;106: 323-32.
5. Heper G, Kose S. Increased myocardial ischemia during nitrate therapy: caused by multiple coronary artery-left ventricle fistulae? *Tex Heart Inst J* 2005; 32: 50-2.

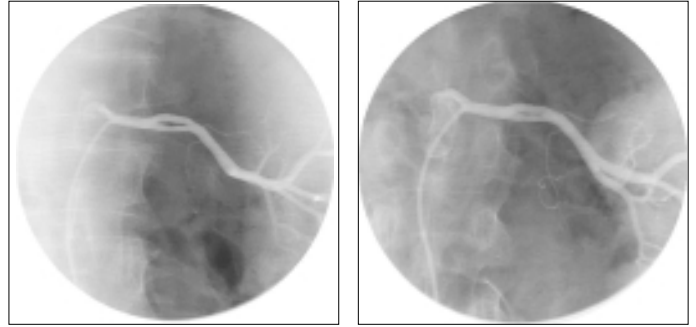
**Address for Correspondence:** Dr. Mutlu Vural, Bayar cad. Pınar sok. Çatalpınar sitesi B blok 8/27 Kozyatağı 34742 Kadıköy, İstanbul, Turkey  
Tel.: +90 212 417 00 00 Gsm: +90 532 508 88 33 Faks: +90 212 417 00 19 E-mail: heppikalp@yahoo.com - mutluvural74@myynet.com

## Renal artery fenestration in a hypertensive adult patient

### *Hipertansif bir hastada renal arter fenestrasyonu*

A 60-year-old male patient was admitted to our cardiology out-patient clinic because of stable angina pectoris. His supine arterial blood pressure was 160/90 mmHg, heart rate 88 bpm, and his temperature was 36.7°C. As a risk factor, he had hypertension for 10 years, which was poorly regulated. Physical examination was unremarkable. Electrocardiography and transthoracic echocardiography were normal. Serum blood urea nitrogen, creatinine, and urinalysis were also normal. Because of treadmill test positivity, coronary angiography was performed, which showed normal coronary arteries. Selective renal angiography was also performed during coronary angiography because of poorly controlled hypertension. Renal artery angiography demonstrated a fenestration of the left renal artery (Fig. 1, 2. Video 1-3. See corresponding video/movie images at [www.anakarder.com](http://www.anakarder.com)). Right renal artery was normal. The term fenestration is used for areas in an artery of short focal division of the lumen.

Although fenestration of the cerebral arteries relatively common, to our knowledge, fenestration of the renal artery is a previously unreported developmental anomaly with unknown clinical significance.



**Figures 1 and 2. Selective left renal angiography views showing fenestration**

Since we did not perform renal vein renin analysis, we cannot comment on whether hypertension which was poorly controlled with combined antihypertensive medications can be associated with this anomaly.

**Mehmet Güngör Kaya, Adnan Abacı, Ülgen Merdanoğlu, Rıdvan Yalçın, Atiye Çengel**  
Department of Cardiology, School of Medicine,  
Gazi University Ankara, Turkey

**Address for Correspondence:** Dr. Adnan Abacı, Gazi University School of Medicine Department of Cardiology 06500 Beşevler, Ankara, Turkey  
Phone: +90 312 202 56 29 Fax: +90 312 212 90 12 E-mail: abaci@gazi.edu.tr

**Presented at the 16th Annual Meeting of the Mediterranean Association for Cardiology and Cardiac Surgery, September 26-29, 2004, Bodrum, Turkey**

## Eisenmenger sendromunun nadir görülen sebebi: Tip A aortik enterüpsiyona eşlik eden büyük ventriküler septal defekt ve patent duktus arteriyozus

### *A rare cause of Eisenmenger syndrome: type A aortic interruption associated with large ventricular septal defect and patent ductus arteriosus*

On yaşında kız hasta kliniğimize çabuk yorulma ve halsizlik şikayetleriyle başvurdu. Fizik muayenede TA 110/80 mmHg, nabız 98 atım/dk'dı. Oskültasyonda tek ve şiddetli ikinci kalp sesi ve pulmoner odakta diyastolik, dekresendo üfürüm saptandı. Bilateral femoral nabızlar palpe edilirken, parmaklarda çomaklaşma ve diferansiyel siyanoz izlendi. Telekardiyografide kardiyotorasik oran artmış, pulmoner konusun belirgin ve periferde doğru vaskülarite azalmıştı (Resim 1). Hemogloblin 12.6 gr/dl, hematokrit 37.7, serum kreatinin ve karaciğer enzimleri normal sınırlardaydı. Elektrokardiyografide biventriküler hipertrofi ekokardiyografide ise geniş outlet ventriküler septal defekt (VSD) saptanırken suprasternal incelemede aorta sol subklaviyan arter sonrasında izlenemedi. Pulmoner arterin normalden geniş olarak, inen aortayla devam ettiği gözlemlendi. Femoral arter aracılığıyla inen aortadan arkus aortaya geçilemedi. Sineanjiyogramda ana pulmoner arter enjeksiyonunda pulmoner arter ve dalları geniş olarak izlendi ve inen aortanın olduğu saptandı (Resim 2. Video 1- video görüntüleri [www.anakarder.com](http://www.anakarder.com)'da izlenebilir). Çıkan aorta anjiyografisinde ise aortanın sol subklaviyan arter sonrasında devamlılığının olmadığı izlendi (Resim 3. Video 2- video görüntüleri