

## Editor-in-Chief

Çetin Erol

## Editors

Cem Barçın

Asife Şahinarslan

## Advisory Board of This Issue

Murat Akçay  
Bahri Akdeniz  
Tolga Aksu  
Zehra İlke Akyıldız  
Şaide Aytakin  
Özcan Başaran  
İbrahim Başarıcı  
Murat Biterker  
Cengiz Bolcal  
Engin Bozkurt  
Uğur Bozlar  
Uğur Coşkun  
Hüseyin Altuğ Çakmak  
Murat Çelik  
Hülya Çiçekçiöğlü  
Ali Çoner  
Ali Emin Denктаş  
Okan Erdoğan  
Ömer Suat Fitoz  
Elena Galli  
Mustafa Gökçe  
Ömer Göktekin  
Yusuf Emre Gürel  
Yılmaz Güneş  
Murat Kadan  
Uğur Nadir Karakulak  
Ahmet Kaya  
Esra Kaya  
Ergün Barış Kaya  
Meral Kayıkçıoğlu  
Fethi Kılıçaslan  
Serdar Küçüköğlü  
Kaan Okyay  
Özlem Özdemir Kumbasar  
Öner Özdoğan  
Ebru Özpelit  
Ayşe Saatçi Yaşar  
Nurten Sayar  
Serkan Saygı  
Ümit Yaşar Siman  
Murat Sümbül  
Abdullah Tunçer  
Serkan Ünlü  
Kenan Yalta  
Özge Turgay Yıldırım

## View Point

Classification of heart failure: A farewell to ejection fraction?

Thomas F. Lüscher; London-United Kingdom

## Meta Analysis

A meta-analysis of randomized controlled trials investigating tirofiban combined with conventional drugs by intracoronary administration for no-reflow prevention

Qian Zeng et al.; Guangxi-China

## Original Investigations

Sex difference in clinical outcomes of Chinese patients with atrial fibrillation and coronary stenting according to age

Jian-Yong Zheng et al.; Beijing-China

Chronic thromboembolic pulmonary hypertension in patients with persistent chest symptoms after acute pulmonary embolism

Elif Şahutoğlu et al.; Istanbul-Turkey

How did the updated hemodynamic definitions affect the frequency of pulmonary hypertension in patients with systemic sclerosis?

Alper Sarı et al.; Ankara-Turkey

Pulmonary hypertension in patients with sarcoidosis: A single-center experience

Deniz Kaptan Özen et al.; Kocaeli-Turkey

Evaluation of radial artery endothelial functions in transradial coronary angiography according to different radial access sites

Elton Soydan et al.; Izmir-Turkey

## Case Reports

An intriguing case of acute coronary syndrome caused by rotten tuna

Chiara Gargiulo et al.; Pavia-Italy

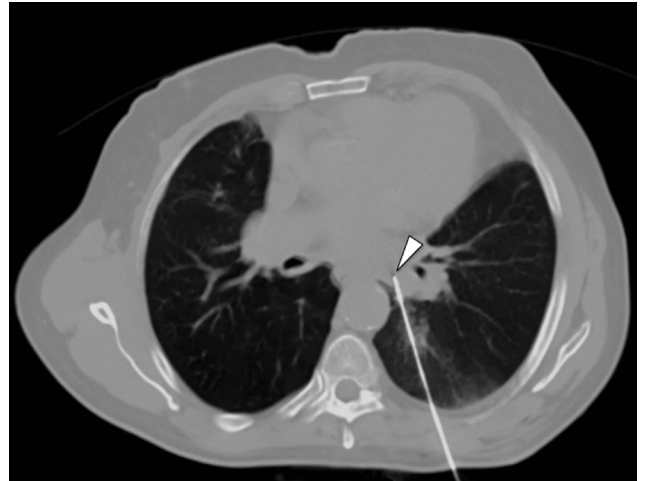
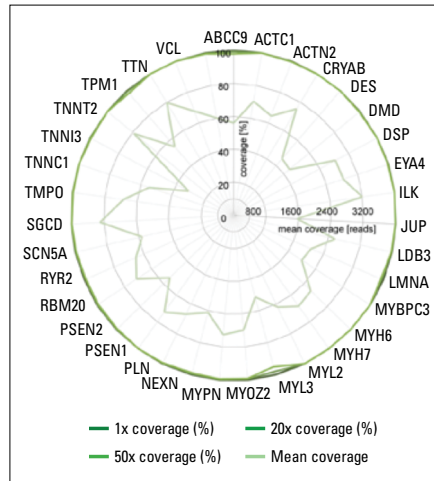
Failed transcatheter mitral valve-in-ring implantation followed by transapical valve-in-valve within the ring and ad hoc paravalvular leak closure

Beytullah Çakal et al.; Istanbul-Turkey

A rare cause of mitral regurgitation after aortic valve replacement: Iatrogenic mitral valve perforation

Begüm Uygur; Istanbul-Turkey

Page: E-1



**Editor-in-Chief**Prof. Dr. Çetin Erol, *Ankara, Turkey***Editors**Cem Barçın, *Ankara, Turkey*Asife Şahinarslan, *Ankara, Turkey***Associate Editors**Adnan Abacı, *Ankara, Turkey*Teoman Kılıç, *Kocaeli, Turkey*Rüçhan Akar, *Ankara, Turkey*Ece Konaç, *Ankara, Turkey*Nihal Akar Bayram, *Ankara, Turkey*Serdar Kula, *Ankara, Turkey*Bülent Behlül Altunkeser, *Konya, Turkey*Selma Metintaş, *Eskişehir, Turkey*Serdal Arslan, *Sivas, Turkey*Kurtuluş Özdemir, *Konya, Turkey*İlyas Atar, *Ankara, Turkey*Murat Özeren, *Mersin, Turkey*Oben Baysan, *Ankara, Turkey*Leyla Elif Sade, *Ankara, Turkey*Ahmet Kaya Bilge, *İstanbul, Turkey*Ahmet Temizhan, *Ankara, Turkey*Hakim Çelik, *Şanlıurfa, Turkey*Belma Turan, *Ankara, Turkey*Recep Demirbağ, *Şanlıurfa, Turkey*Ercan Tutar, *Ankara, Turkey*Ş. Remzi Erdem, *Ankara, Turkey*Omaç Tüfekçioğlu, *Ankara, Turkey*İlkay Erdoğan, *Ankara, Turkey*F. Ajan Tükün, *Ankara, Turkey*Faruk Ertaş, *Diyarbakır, Turkey*Taner Ulus, *Eskişehir, Turkey*Sadi Güleç, *Ankara, Turkey*Mehmet Uzun, *İstanbul, Turkey*Ali Gürbüz, *İzmir, Turkey*Aylin Yıldırım, *Ankara, Turkey*Gökhan Kahveci, *İstanbul, Turkey*Mehmet Birhan Yılmaz, *İzmir, Turkey*Alper Kepez, *İstanbul, Turkey***Senior Consultant in Biostatistics**Kazım Özdamar, *Eskişehir, Turkey***Consultant in Biostatistics**Fezan Mutlu, *Eskişehir, Turkey***Previous Editor-in-Chief**Bilgin Timuralp, *Eskişehir, Turkey***Editorial Board**Ramazan Akdemir, *Sakarya, Turkey*Levent Akyürek, *Göteborg, Sweden*Azin Alizadehasl, *Tehran, Iran*Necmi Ata, *Eskişehir, Turkey*Saide Aytekin, *İstanbul, Turkey*Vedat Aytekin, *İstanbul, Turkey*Ljuba Bacharova, *Bratislava, Slovak Republic*Luigi P. Badano, *Udine, Italy*Anzel Bahadır, *Düzce, Turkey*Adrian Baranchuk, *Kingston, Ontario, Canada*Murat Biteker, *Muğla, Turkey*Eugene Braunwald, *Boston, MA, USA*Cahid Civelek, *St. Louis, MO, USA*Ali Emin Denktaş, *Houston, TX, USA*Polychronis Dilaveris, *Athens, Greece*Firat Duru, *Zurich, Switzerland*Ertuğrul Ercan, *İzmir, Turkey*Okan Erdoğan, *İstanbul, Turkey*Özcan Erel, *Ankara, Turkey*Ali Gholamrezanezhad, *Tehran, Iran*Michael Gibson, *Boston, MA, USA*Orhan Gökalp, *İzmir, Turkey*Bülent Görenek, *Eskişehir, Turkey*Okan Gülel, *Samsun, Turkey*Sema Güneri, *İzmir, Turkey*Yekta Gürlertop, *Edirne, Turkey*Murat Güvener, *Ankara, Turkey*Cemil İzgi, *London, UK*Diwakar Jain, *Philadelphia, USA*Erdem Kaşıkçioğlu, *İstanbul, Turkey*Cihançir Kaymaz, *İstanbul, Turkey*Mustafa Kılıç, *Denizli, Turkey*Mustafa Kılıçkap, *Ankara, Turkey*Serdar Küçükoğlu, *İstanbul, Turkey*Thomas F. Lüscher, *Zurich, Switzerland/London, UK*Peter Macfarlane, *Renfrewshire, Scotland*Robert V. Mahley, *San Francisco, CA, USA*Giuseppe Mancina, *Milan, Italy*G.B. John Mancini, *Vancouver BC, Canada*Anthony De Maria, *San Diego, CA, USA*Pascal Meier, *London, UK*Franz H. Messerli, *New York, USA*Sanem Nalbantgil, *İzmir, Turkey*Navin C. Nanda, *Birmingham, AL, USA*Yılmaz Nişancı, *İstanbul, Turkey*Hakan Oral, *Ann Arbor, MI, USA*Necla Özer, *Ankara, Turkey*Zeki Öngen, *İstanbul, Turkey*Mehmet Özkan, *İstanbul, Turkey*Sotirios N. Prapas, *Athens, Greece*Fausto J. Pinto, *Lisbon, Portugal*Vedat Sansoy, *İstanbul, Turkey*Raşit Sayın, *Trabzon, Turkey*Mark V. Sherrid, *New York, USA*Horst Sievert, *Frankfurt, Germany*İlke Sipahi, *İstanbul, Turkey*Richard Sutton, *Monaco, Monaco*Ahmet Şaşmaz, *İstanbul, Turkey*S. Lale Tokgözoğlu, *Ankara, Turkey*Murat Tuzcu, *Cleveland, OH, USA*Dilek Ural, *İstanbul, Turkey*Ahmet Ünalır, *Eskişehir, Turkey*Selma Arzu Vardar, *Edirne, Turkey*Mehmet Yokuşoğlu, *Ankara, Turkey*Jose L. Zamorano, *Madrid, Spain*Wojciech Zareba, *New York, USA*Yuqing Zhang, *Beijing, China***The Owner on behalf of  
the Turkish Society of Cardiology****Türk Kardiyoloji Derneği adına  
İmtiyaz Sahibi**

Mustafa Kemal EROL

Address : Nish İstanbul A Blok Kat: 8, No: 47-48

Çobançeşme Sanayi Cad. No: 11

Yeni Bosna, Bahçelievler 34196

İstanbul, Türkiye

Phone : +90 212 221 1730-38

Fax : +90 212 221 1754

E-mail : tkd@tkd.org.tr

Web : www.tkd.org.tr

**Editor-in-Chief Office**

Phone : +90 (535) 461 41 62

Fax : +90 (212) 221 17 54

E-mail : info@anatoljcardiol.com

**Assistants to the Editor-in-Chief**

Ebru BOZ

Elif SÖNMEZ



Publisher: Kare Yayıncılık (Kare Publishing)

Concord İstanbul Dumlupınar Mah. Yumurtacı Abdi Bey

Cad. Cihan Sok. No: 15, B Blok Da: 162 Kat: 21, Kadıköy,

İstanbul, TURKEY

Phone: +90 216 550 61 11

Fax: +90 216 550 61 12

http://www.kareyayincilik.com

E-mail: kareyayincilik@gmail.com

Yayın Türü: Uluslararası Süreli, Basım Tarihi: Ocak 2021

Basım: Filmevi Grafik Renk Ayrımı Sistemleri San.

Tic. LTD. ŞTİ. İstanbul-Türkiye

**CONTENTS****EDITORIAL**

- ▶ **New year and our 20<sup>th</sup> Anniversary, Thomas F. Lüscher, pulmonary hypertension** 1  
Çetin Erol; Ankara-*Turkey*

**VIEW POINT**

- ▶ **Classification of heart failure: A farewell to ejection fraction?** 2  
Thomas F. Lüscher; London-*United Kingdom*

**META ANALYSIS**




- ▶ **A meta-analysis of randomized controlled trials investigating tirofiban combined with conventional drugs by intracoronary administration for no-reflow prevention** 7  
Qian Zeng, Long Dan Zhang, Wei Wang; Guangxi-*China*

**ORIGINAL INVESTIGATIONS**

- ▶ **Sex difference in clinical outcomes of Chinese patients with atrial fibrillation and coronary stenting according to age** 17  
Jian-Yong Zheng, Dong-Tao Li, Yu Chen, Yi-Da Tang, Cheng-Jun Guo, Yun-Dai Chen, Zhi-Min Ma, Tian-Chang Li; Beijing-*China*
- ▶ **Chronic thromboembolic pulmonary hypertension in patients with persistent chest symptoms after acute pulmonary embolism** 24  
Elif Şahutoğlu, Esin Tuncay, Gülfidan Aras, Esin Yentürk, Zehra Dilek Kanmaz, Gül Öngen, Zeki Öngen; İstanbul-*Turkey*
- ▶ **How did the updated hemodynamic definitions affect the frequency of pulmonary hypertension in patients with systemic sclerosis?** 30  
Alper Sarı, Yusuf Ziya Şener, Berkan Armağan, Levent Kılıç, Ergün Barış Kaya, Vedat Hekimsoy, Ömer Karadağ, Şule Apras Bilgen, Sedat Kiraz, Ali İhsan Ertenli, Lale Tokgözoğlu, Ali Akdoğan; Ankara-*Turkey*
- ▶ **Pulmonary hypertension in patients with sarcoidosis: A single-center experience** 36  
Deniz Kaptan Özen, Bülent Mutlu, Derya Kocakaya, Burak Turan, Sena Sert Şekerci, Berrin Ceyhan; Kocaeli, İstanbul-*Turkey*
- ▶ **Evaluation of radial artery endothelial functions in transradial coronary angiography according to different radial access sites** 42  
Elton Soydan, Mehmet Kış, Mustafa Akın; İzmir-*Turkey*

# CONTENTS

## CASE REPORTS

- ▶ An intriguing case of acute coronary syndrome caused by rotten tuna  49  
Chiara Gargiulo, Silvana De Martino, Alberto Somaschini, Stefano Cornara, Gabriele Crimi; Pavia, Genova-Italy
- ▶ Failed transcatheter mitral valve-in-ring implantation followed by transapical valve-in-valve within the ring and ad hoc paravalvular leak closure  50  
Beytullah Çakal, Sinem Çakal, Hacı Murat Güneş, Mehmet Onur Omaygenç, Aydın Yıldırım; İstanbul-Turkey
- ▶ A rare cause of mitral regurgitation after aortic valve replacement: Iatrogenic mitral valve perforation  53  
Begüm Uygur, Ömer Çelik, Anıl Şahin, Ali Rıza Demir, Mehmet Ertürk; İstanbul-Turkey

## DIAGNOSTIC PUZZLE

- ▶ What is your diagnosis? 55  
Yavuzer Koza, Ferhat Kanbay, Muhammed Hakan Taş, Fatih Alper; Erzurum-Turkey


## LETTERS TO THE EDITOR

- ▶ Percutaneous left atrial cardiac biopsy under multidetector computed tomography guidance 56  
Umberto Geremia Rossi, Anna Maria Ierardi, Maurizio Cariati; Genova, Milano-Italy
- ▶ Shock wave therapy in cardiology: A comment 57  
Sergei V. Jargin; Moscow-Russia

## DIAGNOSTIC PUZZLE - ANSWER

- ▶ A 32-year-old woman with worsening dyspnea 59  
Yavuzer Koza, Ferhat Kanbay, Muhammed Hakan Taş, Fatih Alper; Erzurum-Turkey

## E-PAGE ORIGINAL IMAGES

- ▶ An extremely rare coronary artery anomaly: Monster left anterior descending coronary artery  E-1  
Savaş Çelebi, Özlem Özcan Çelebi; Ankara-Turkey
- ▶ Weird pacing spikes E-2  
Chao-Yu Chen, Ju-Yi Chen; Tainan-Taiwan