

## An unusual mass in unusual gender 🎬

A 62-year-old-woman with abdominal pain and right leg claudication was admitted to our catheterization laboratory for diagnostic peripheral arteriography. Physical examination was notable for a palpable mass in the right iliac fossa. Her medical history was unremarkable except for hysterectomy. Diagnostic abdominal and peripheral arteriography revealed egg-shaped mass with sharp borders (Fig. 1, Video 1, 2). Routine laboratory tests were within normal limits. Abdominal contrast-enhanced computed tomography (CT) showed a huge pelvic mass approximately 10x10 cm in diameter with linear calcifications, located posterior to the bladder and extending beyond the pelvis (Fig. 2).

### What is your diagnosis?

- A. Iliac vein angiosarcoma
- B. Internal iliac artery aneurysm
- C. Bladder diverticulum
- D. May-Thurner syndrome

Answer: p. 347

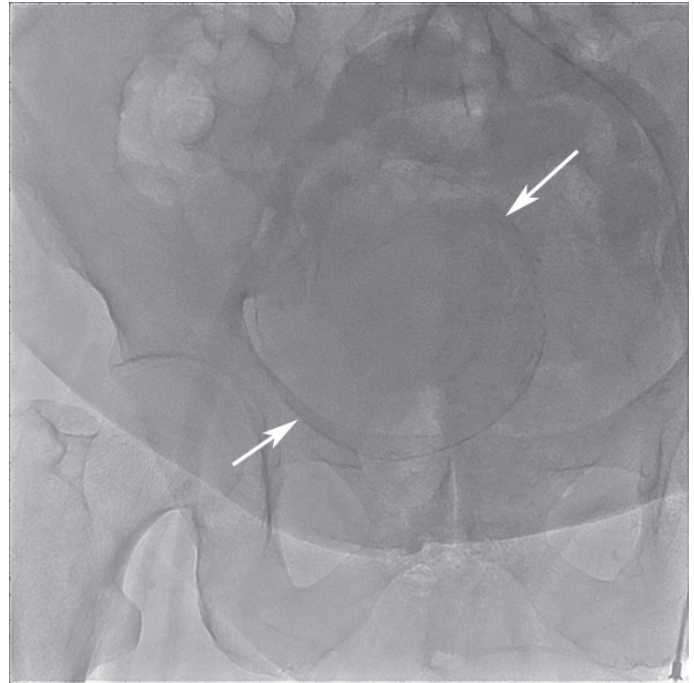


Figure 1. A huge pelvic mass with sharp borders (white arrows)

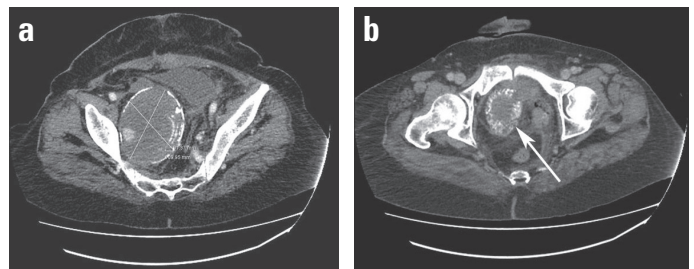


Figure 2. (a) Linear calcifications of the mass. (b) The extension of the mass beyond the pelvis (white arrow)

**Address for correspondence:** Dr. Yavuzer Koza, Atatürk Üniversitesi Tıp Fakültesi  
Kardiyoloji Anabilim Dalı, Yakutiye, Erzurum-Türkiye  
Phone: +90 442 231 85 21 Fax: +90 442 236 13 01 E-mail: yavuzerkoza@hotmail.com

Accepted Date: 13.02.2017

©Copyright 2017 by Turkish Society of Cardiology - Available online at [www.anatoljcardiol.com](http://www.anatoljcardiol.com)  
DOI:10.14744/AnatolJCardiol.2017.7717

