

**Baş Editör / Editor-in-Chief**  
Bilgin Timuralp

**Editör / Editor**  
Gulmira Kudaiberdieva

**Bu Sayının Yayın Danışmanları**  
Advisory Board of This Issue

Mehmet Ali Ağırbaşı

Özgür Aslan

Erdal Aslım

Ljuba Bacharova

Osman Başpınar

Hüseyin Bozbaşı

Mustafa Çıkrıkçıoğlu

Ömer Çolak

Afshin A. Divani

Orhan Dođdu

Oktay Eray

Ali Serdar Fak

Brigitte Gansera

Hasan Gök

Onur Göksel

Tuğrul Göncü

Adem Güler

Ünal Güntekin

Yeşim Güray

Erkan İriz

Nihat Kalay

Hekim Karapınar

Fatih Koç

Kemal Korkmaz

İbrahim Halil Kurt

Anastasios Makedos

Philippe Maury

Leonid B. Naumov

Hakan Oral

Ender Ödemiş

Beste Özben

Özcan Özeke

Ayşegül Özgök

Tolga Özyiğit

Mohammad Sahebjam

Levent Saltık

Özlem Saygılı

Murat Sezer

Iana Simova

Mahmut Şahin

Yoshihisa Tanoue

R.Gökmen Turan

Orhan Uzun

Hunaid A. Vohra

Mutlu Vural

Levent Yazıcıoğlu

## Özgün Araştırmalar / Original Investigations

A survey for the evaluation of the training period of cardiology specialists in Turkey

*Türkiye kardiyoloji uzmanlık eğitimi dönemi değerlendirme anketi*

Bekir Serhat Yıldız et al.; Izmir, Muş-Turkey

Echocardiography for detecting diastolic dysfunction in CAD and normal ejection fraction

*Normal ejeksiyon fraksiyonlu KAH hastalarında diyastolik disfonksiyonu saptamada ekokardiyografi*

Necla Özer et al.; Ankara, Eskişehir-Turkey

Implications of tilt-table induced faint time in patients with reflex syncope

*Refleks senkoplu hastalarda tilt-masası ile indüklenen bayılma süresinin değerlendirilmesi*

Ümit Hıdır Ulaş et al.; Cleveland-OH-USA, Ankara-Turkey

Relationship of brain natriuretic peptide with metabolic syndrome parameters

*Beyin natriüretik peptidin metabolik sendrom parametreleri ile ilişkisi*

Sanem Öztekin et al.; Ankara, Balıkesir, Adana-Turkey

Heart-type fatty acid-binding protein levels and coronary artery disease

*Kalp-tipi yağ asidi-bağlayıcı protein düzeyleri ve koroner arter hastalığı*

Hatem Arı et al.; Konya-Turkey

Neopterin levels and its association with angiographic variables in patients with slow coronary flow

*Yavaş koroner akımlı hastalarda neopterin düzeyleri ve anjiyografik değişkenlerle birlikteliği*

Ercan Varol et al.; Isparta-Turkey

Oral contraceptive therapy, homocysteine and C-reactive protein levels in women

*Kadınlarda oral kontraseptif tedavisinin homosistein ve C-reaktif protein düzeyleri*

Vajihe Norouzi et al.; Tehran-Iran

Anjina pectoris ve enfarktüste değişik statinler ve kombinasyonları ile, hsCRP düzeyleri

*HsCRP levels, different statins and their combinations in angina pectoris and infarction*

Esat Namal ve ark.; Şanlıurfa, İstanbul-Türkiye

Conduction velocity and conducting area during isthmus-dependent atrial flutter

*İstmusa bağımlı atriyal flutter sırasında iletim hızı ve iletim alanı*

Alim Erdem et al.; Sivas, İstanbul-Turkey, Hidaka/Saitama-Japan

Hipoksik iskemik ensefalopatili yenidoğanlarda ventrikül Doppler performans indeksi ve Z-skoru

*Ventricular Doppler performance index and Z-score in newborns with hypoxic-ischemic encephalopathy*

Hayrullah Alp ve ark.; Konya-Türkiye

Arteriyel "switch" ameliyatı yapılan büyük arter transpozisyonlu hastalarımızın izlemi

*Follow-up of our patients with transposition of the great arteries underwent arterial switch operation*

Osman Akdeniz ve ark.; İstanbul-Türkiye

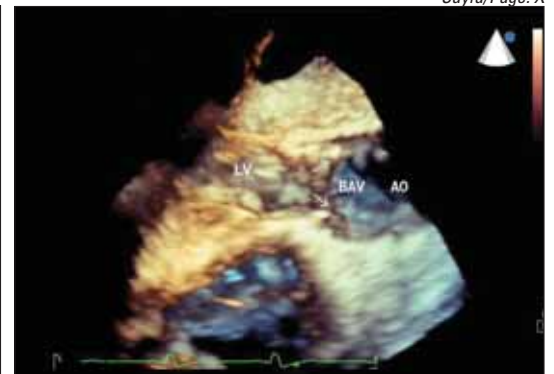
## Derleme / Review

Diabetic cardiomyopathy

*Diyabetik kardiyomyopati*

Eser Acar et al.; Kocaeli-Turkey

Sayfa/Page: X



**Baş Editör / Editor-in-Chief**  
**Bilgin Timuralp, Eskişehir, Türkiye**

**Editör / Editor**

**Gulmira Kudaiberdieva, Bishkek, Kyrgyzstan**

**Editör Yardımcıları / Associate Editors**

Mehmet Bilge, Ankara, Türkiye  
Sadi Güleç, Ankara, Türkiye  
Barış İlerigelen, İstanbul, Türkiye  
Cihangir Kaymaz, İstanbul, Türkiye  
Sanem Nalbantgil, İzmir, Türkiye  
Yılmaz Nişancı, İstanbul, Türkiye

Kurtuluş Özdemir, Konya, Türkiye  
İnan Soydan, İzmir, Türkiye  
Ahmet Tulga Ulus, Ankara, Türkiye  
Ercan Tutar, Ankara, Türkiye  
Berrin Umman, İstanbul, Türkiye  
Mehdi Zoghi, İzmir, Türkiye

**Baş Editör Danışmanı / Editor-in-Chief Consultant**

**Suna Kırac, Denizli, Türkiye**

**Biyoistatistik Baş Danışmanı / Senior Consultant in Biostatistics**

**Kazım Özdamar, Eskişehir, Türkiye**

**Biyoistatistik Danışmanlar / Consultants in Biostatistics**

**Canan Baydemir, Eskişehir, Türkiye**

**İlker Ünal, Adana, Türkiye**

**Uluslararası Yayın Kurulu / International Editorial Board**

Adnan ABACI, Ankara, Türkiye  
Kamil ADALET, İstanbul, Türkiye  
Ramazan AKDEMİR, Ankara, Türkiye  
Levent AKYÜREK, Göteborg, Sweden  
Necmi ATA, Eskişehir, Türkiye  
Mehmet ATEŞ, İzmir, Türkiye  
Saide AYTEKİN, İstanbul, Türkiye  
Vedat AYTEKİN, İstanbul, Türkiye  
Ljuba BACHAROVA, Bratislava, Slovak Republic  
Luiggi P. BADANO, Udine, Italy  
Gani BAJRAKTARI, Prishtina, Kosovo  
Işık BAŞAR, İstanbul, Türkiye  
George A. BELLER, Charlottesville VA, USA  
Ahmet BİRAND, İstanbul, Türkiye  
Alparslan BİRDANE, Eskişehir, Türkiye  
William James BRAWN, Birmingham, UK  
Gerald David BUCKBERG, Los Angeles, CA, USA  
Cahid ÇİVELEK, St. Louis, MO, USA  
Nail ÇAĞLAR, Ankara, Türkiye  
Erdal ÇAVUŞOĞLU, New York, USA  
Yüksel ÇAVUŞOĞLU, Eskişehir, Türkiye  
Mehmet ÇİLİNGİROĞLU, Cincinnati, USA  
Vedat DAVUTOĞLU, Gaziantep, Türkiye  
Necmi DEĞER, Antalya, Türkiye  
Ubeydullah DELİGÖNÜL, Tyler TX, USA  
Ufuk DEMİRKILIÇ, Ankara, Türkiye  
Ertan DEMİRTAŞ, Ankara, Türkiye  
Ali Emin DENKTAŞ, Houston, TX, USA  
Melda DOLAN, St. Louis, USA  
Fırat DURU, Zurich, Switzerland  
Rasim ENAR, İstanbul, Türkiye  
Oktay ERAY, Antalya, Türkiye  
Ertuğrul ERÇAN, Çanakkale, Türkiye  
Okan ERDOĞAN, İstanbul, Türkiye  
Ali ERGİN, Kayseri, Türkiye  
Çetin EROL, Ankara, Türkiye  
Ali Serdar FAK, İstanbul, Türkiye  
Ali GHOLAMREZANEZHAD, Tahran, İran  
Hasan GÖK, Konya, Türkiye  
Mustafa GÖKÇE, Trabzon, Türkiye  
Ömer GÖKTEKİN, Eskişehir, Türkiye  
Özhan GÖLDELİ, İzmir, Türkiye

Bülent GÖRENEK, Eskişehir, Türkiye  
Şema GÜNERİ, İzmir, Türkiye  
Özen GÜVEN, İstanbul, Türkiye  
Deniz GÜZELSOY, İstanbul, Türkiye  
Masayasu HIRAOKA, Tokyo, Japan  
Coşkun İKİZLER, Ankara, Türkiye  
Murat İKİZLER, Eskişehir, Türkiye  
Gökhan İPEK, İstanbul, Türkiye  
Erkan İRİZ, Ankara, Türkiye  
Diwakar JAIN, Philadelphia, USA  
Charles JAZRA, Bawchrieh, Lebanon  
Gökse KAHRAMAN, Kocaeli, Türkiye  
Mehmet KAPLAN, İstanbul, Türkiye  
Hayrettin KARAEREN, Ankara, Türkiye  
Sezer KARCİER, İstanbul, Türkiye  
Erdem KAŞIKÇIOĞLU, İstanbul, Türkiye  
Sırrı KES, Ankara, Türkiye  
Mustafa KILIÇ, Denizli, Türkiye  
Serdar KULA, Ankara, Türkiye  
Ethem KUMBAY, Bursa, Türkiye  
Akira KURİTA, Tokyo, Japan  
Nezih KÜÇÜKARSLAN, Ankara, Türkiye  
Serdar KÜÇÜKOĞLU, İstanbul, Türkiye  
Hakan KÜLTÜRSAY, İzmir, Türkiye  
Byung-Boong LEE, Reston, VA, USA  
Samuel LEVY, Marseille, France  
Jason M. LAZAR, New York, USA  
Peter MACFARLANE, Renfrewshire, Scotland  
Robert W. MAHLEY, San Francisco, CA, USA  
G.B. John MANCINI, Vancouver BC, Canada  
Matti MÄNTTÄRI, Helsinki, Finland  
Franz H. MESSERLI, New York, USA  
Leonid B. NAUMOV, Beer-Sheva, Israel  
Tuğrul OKAY, İstanbul, Türkiye  
Altan ONAT, İstanbul, Türkiye  
Derviş ORAL, Ankara, Türkiye  
Hakan ORAL, Ann Arbor MI, USA  
M. Remzi ÖNDER, İzmir, Türkiye

Zeki ÖNGEN, İstanbul, Türkiye  
Necla ÖZER, Ankara, Türkiye  
Mehmet Bülent ÖZİN, Ankara, Türkiye  
Mehmet ÖZKAN, İstanbul, Türkiye  
Süheyla ÖZKUTLU, Ankara, Türkiye  
Azmi ÖZLER, İstanbul, Türkiye  
Ferhan ÖZMEN, Ankara, Türkiye  
Önal ÖZSARUHAN, İstanbul, Türkiye  
Ahmet Fatih ÖZYAZICIOĞLU, Bursa, Türkiye  
Sotirios N. PRAPAS, Athens, Greece  
Vedat SANSOY, İstanbul, Türkiye  
Muhammed SARİC, New Jersey, USA  
Murat SEZER, İstanbul, Türkiye  
Mark V. SHERRID, New York, USA  
Horst SIEVERT, Frankfurt, Germany  
İlke SİPAHI, Cleveland, USA  
Hulki Meltem SÖNMEZ, Aydın, Türkiye  
Richard SUTTON, London, UK  
Ahmet ŞAŞMAZEL, İstanbul, Türkiye  
Hüseyin ŞENOCAK, Erzurum, Türkiye  
Kohji TAMURA, Yamanashi, Japan  
Zeynep TARTAN, İstanbul, Türkiye  
Oğuz TAŞDEMİR, Ankara, Türkiye  
Ahmet TEMİZHAN, Ankara, Türkiye  
S. Lale TOKGÖZOĞLU, Ankara, Türkiye  
Oktay TUTAREL, Hannover, Germany  
Murat TUZCU, Cleveland OH, USA  
Volkan TUZCU, Arkansas, USA  
Sabahattin UMMAN, İstanbul, Türkiye  
Dilek URAL, Kocaeli, Türkiye  
Ahmet ÜNALIR, Eskişehir, Türkiye  
Marc A. VOS, Utrecht, NL  
Kerem VURAL, Ankara, Türkiye  
Galen WAGNER, Durham, NC, USA  
Hein WELLENS, Maastricht, NL  
Cevat YAKUT, İstanbul, Türkiye  
Nuran YAZICIOĞLU, İstanbul, Türkiye  
Murat YEŞİL, İzmir, Türkiye  
Remzi YILMAZ, Şanlıurfa, Türkiye  
Kiyoshi YOSHIDA, Okayama, Japan  
Mehmet YOKUŞOĞLU, Ankara, Türkiye



Yayınevi / Publisher  
İmtiyaz Sahibi ve Sorumlu Yazı İşleri Müdürü:  
**İbrahim Kara**  
Adres: Kızılelma cad. 5/3 34096 Fındıkzade-İstanbul  
Tel: 0212 589 00 53 Fax: 0212 589 00 94  
E-mail: info@avesyayincilik.com  
Baskı: ADA Ofset Matbaacılık Tic. Ltd. Şti. 0212 567 12 42  
Basım Tarihi: Aralık 2011

**Yazı İşleri (Eskişehir)**

Baş Editör Ofis Asistanları: Betül Tuntaş, Betül Celik  
Yazışma Adresi: Kızılelma cad.  
5/3 34096 Fındıkzade-İstanbul  
Telefon: 0222 229 15 65 - 0533 966 48 67  
Faks: 0222 229 15 85  
E-mail: info@anakarder.com - btimur@ogu.edu.tr  
Yayın Türü: Yerel Süreli Yayın  
ISSN 1302-8723



Anadolu Kardiyoloji Dergisi Eskişehir Osmangazi  
Üniversitesi (ESOGU) tarafından kısmen desteklenmektedir.  
The Anatolian Journal of Cardiology is partly supported  
by University of Eskişehir Osmangazi (ESOGU).  
ESKİŞEHİR OSMANGAZI ÜNİVERSİTESİ  
MEŞELİK KAMPUSU 26480 ESKİŞEHİR  
Tel: +90 222 239 71 48  
Faks: +90 222 239 54 00

## AMAÇ VE KAPSAM

Anadolu Kardiyoloji Dergisi kardiyoloji konulu, yayın dili hem Türkçe hem İngilizce olan, bağımsız ve önyargısız çift-kör hakemlik (peer-review) ilkelerine dayanan uluslararası, periyodik bir dergidir. Anadolu Kardiyoloji Dergisi Şubat, Mart, Mayıs, Haziran, Ağustos, Eylül, Kasım ve Aralık aylarında olmak üzere yılda 8 sayı olarak yayınlanır.

Anadolu Kardiyoloji Dergisi'nin hedefi uluslararası düzeyde nitelikli, sürekli ve kardiyoloji konusunda özgün bir periyodik olarak klinik ve bilimsel açıdan en üst düzeyde orijinal araştırmaları yayınlamaktır. Bununla birlikte eğitim ile ilgili temel yenilikleri kapsayan derlemeler, editöryel kısa yazılar, olgu sunumları, orijinal görüntüler ve geniş kardiyoloji kesimlerinin konular hakkındaki deneyimlerini ve eleştirilerini içeren mektuplar ve sosyal kardiyoloji konulu yazılar yayınlamaktır.

Derginin hedef kitlesi kardiyoloji, çocuk kardiyoloji, kardiyovasküler cerrahi ve iç hastalıkları uzmanları, pratisyen hekimler ve tüm ilgili branşlardaki uzmanlardır.

Derginin editöryel ve yayın işleyişi ICMJE, COPE ve HEART Grubu standartları çerçevesinde yürütülmektedir.

Anadolu Kardiyoloji Dergisi; Science Citation Index Expanded, Journal Citation Reports, Index Medicus/Medline/PubMed, EMBASE, Scopus, CINAHL, Gale/Cengage Learning, EBSCO, DOAJ, ProQuest, Index Copernicus ve Tübitak/Ulakbim Türk Tıp Dizini tarafından indekslenmektedir.

Anadolu Kardiyoloji Dergisi'nin gelirleri abone ücretleri ve ticari firmalardan sağlanan reklamlardan oluşmaktadır.

### Abone İşlemleri

Derginin tüm sayılarının tam metinlerine ücretsiz olarak [www.anakarder.com](http://www.anakarder.com) adresinden ulaşılabilir. Basılı dergiye abone olmak isteyen kişiler web sayfasındaki abone formunu doldurmalı ve Yayınevine başvurmalıdır.

Yayınevi : AVES Yayıncılık-İbrahim Kara  
Adres : Kızılelma cad. 5/3 34096  
Fındıkzade-İstanbul  
Tel. : 0212 589 00 53  
Faks : 0212 589 00 94  
Web sayfası : [www.avesyayincilik.com](http://www.avesyayincilik.com)  
E-posta : [info@avesyayincilik.com](mailto:info@avesyayincilik.com)

### Baskı İzinleri ve Tekrar Baskılar

Baskı izinleri ve Tekrar Baskılar için başvurular Yayınevine yapılmalıdır.

Yayınevi: AVES Yayıncılık-İbrahim Kara  
Adres: Kızılelma Cad. 5/3 34096 Fındıkzade-İstanbul  
Telefon: +90 212 589 00 53  
Faks: +90 212 589 00 94  
Web sayfası: [www.avesyayincilik.com](http://www.avesyayincilik.com)  
E-posta: [info@avesyayincilik.com](mailto:info@avesyayincilik.com)

### Reklam

Reklam ile ilgili başvurular Yayınevine yapılmalıdır.

Yayınevi : AVES Yayıncılık-İbrahim Kara  
Adres : Kızılelma cad. 5/3 34096  
Fındıkzade-İstanbul  
Tel. : 0212 589 00 53  
Faks : 0212 589 00 94  
Web sayfası : [www.avesyayincilik.com](http://www.avesyayincilik.com)  
E-posta : [info@avesyayincilik.com](mailto:info@avesyayincilik.com)

### Yazarlara Bilgi

Yazarlara Bilgi dergi sayfalarında ve [www.anakarder.com](http://www.anakarder.com) web sayfasında yayınlanmaktadır.

### Materyal Sorumluluk Reddi

Anadolu Kardiyoloji Dergisi'nde yayınlanan tüm yazılarda görüş ve raporlar yazar(lar)ın görüşüdür ve Editör, editöryel kurul ya da yayıncının görüşü değildir; Editör, editöryel kurul ve yayıncı bu yazılar için herhangi bir sorumluluk kabul etmemektedir.

Dergimizde asitsiz kağıt kullanılmaktadır.

## AIMS AND SCOPE

The Anatolian Journal of Cardiology is the double-blind peer-reviewed, Turkish and English languages international periodical on cardiology. The Anatolian Journal of Cardiology is published 8 times per year (February, March, May, June, August, September, November and December).

The aim of the Anatolian Journal of Cardiology is to publish research articles on original issues of cardiology of the highest clinical and scientific quality at the international level. Along with this, it publishes reviews covering fundamental innovations and dealing with education, short editorial articles, original case reports and images, letters on experience relevant to broad cardiology issues and critiques, as well as issues on social cardiology.

The journal's audience includes cardiologists, pediatric cardiologists, cardiovascular surgeons, internal medicine specialists, practitioners and specialists of all relevant disciplines.

The journal's editorial and publishing process is adherent to standards of ICMJE, COPE, and HEART Group.

The Anatolian Journal of Cardiology is indexed in Science Citation Index Expanded, Journal Citation Reports, Index Medicus/Medline/PubMed, EMBASE, Scopus, CINAHL, Gale/Cengage Learning, EBSCO, DOAJ, ProQuest, Index Copernicus and Tübitak/Ulakbim Turkish Medical Database.

The funding sources of the journal are advertising and subscription.

### Subscription information

The access to all full-text issues of the journal is free at [www.anakarder.com](http://www.anakarder.com). To subscribe to the print issues of the journal please fill the subscription form at [www.anakarder.com](http://www.anakarder.com) and contact the Publisher.

Publisher : AVES Yayıncılık-İbrahim Kara  
Address : Kızılelma cad. 5/3 34096  
Fındıkzade-İstanbul  
Phone : +90 212 589 00 53  
Fax : +90 212 589 00 94  
Web page : [www.avesyayincilik.com](http://www.avesyayincilik.com)  
E-mail : [info@avesyayincilik.com](mailto:info@avesyayincilik.com)

### Permissions and Reprints

Permissions for reproduction of materials published and Reprints in the Anatolian Journal of Cardiology should be requested at Publisher:

Publisher: AVES Yayıncılık-İbrahim Kara  
Address: Kızılelma Cad. 5/3 34096 Fındıkzade-İstanbul-Turkey  
Phone: +90 212 589 00 53  
Fax: +90 212 589 00 94  
Web page: [www.avesyayincilik.com](http://www.avesyayincilik.com)  
E-mail: [info@avesyayincilik.com](mailto:info@avesyayincilik.com)

### Advertising

For requests concerning advertising, please contact Publisher.

Publisher : AVES Yayıncılık-İbrahim Kara  
Address : Kızılelma cad. 5/3 34096  
Fındıkzade-İstanbul  
Phone : +90 212 589 00 53  
Fax : +90 212 589 00 94  
Web page : [www.avesyayincilik.com](http://www.avesyayincilik.com)  
E-mail : [info@avesyayincilik.com](mailto:info@avesyayincilik.com)

### Instructions for authors

Instructions for authors are published in the journal pages and could be accessed at the web site of the journal - [www.anakarder.com](http://www.anakarder.com)

### Material Disclaimer

Statements or opinions expressed in the manuscripts published in the Anatolian Journal of Cardiology reflect the views of the author(s) and not the opinions of the editors, the editorial board and the publisher; the editors, the editorial board and the publisher disclaim any responsibility or liability for such materials.

The journal is printed on an acid-free paper.





## INSTRUCTIONS TO AUTHORS

### Editor-in-Chief: Professor Dr. Bilgin TİMURALP

Address of Correspondence: Anadolu Kardiyoloji Dergisi  
Kzilelma Cad. 5/3 34096 Fındıkzade-Istanbul/Turkey  
Phone: +90 222 229 15 65 +90 533 966 48 67  
Fax: +90 222 229 15 85  
Web page: www.anakarder.com  
E-mail: btimur@ogu.edu.tr - info@anakarder.com

The Anatolian Journal of Cardiology, being a double-blind peer-reviewed journal publishes all articles on clinical cardiology with clear clinical relevance including experimental, fundamental and original clinical studies, postgraduate education on cardiology, investigations concerning especially Turkish public health, case reports, relevant letters with questions, answers and contributions, history of cardiology, publication and research ethics, as well as letters on expected, applied and changed relations between State institutions and physicians, works and developments of Turkish and World Societies of Cardiology. The referee's board that advises the selection of papers for publication by Editor consists of the elected advisory experts of the journal and is selected from independent national and international authorities. The Anatolian Journal of Cardiology is published 8 times per year, including February, March, May, June, August, September, November and December.

Proper use of Turkish language is of special importance. Turkish Language Institution dictionary and orthography guide together with dictionary of cardiology terms published by Turkish Society of Cardiology should be taken as basic for literary language. Papers written in English language are particularly supported and encouraged.

An approval of research protocols by Ethics Committee in accordance with international agreements (Helsinki Declaration of 1975, revised 2008 - available at <http://www.manet/en/30publications/10policies/b3/index.html>), "Guide for the care and use of laboratory animals - [www.nap.edu/catalog/5140.html](http://www.nap.edu/catalog/5140.html)) is required for experimental, clinical and drug studies.

The submission of a written document with institutional approval of Ethics Committee or equivalent confirming the research protocol, even some case reports, are performed in frame of general ethical rules, is mandatory.

The signed statement of scientific contributions and responsibilities of all authors and statement on absence of conflict of interests are required. (ICMJE Form for Disclosure of Potential Conflicts of Interest and Authorship Contributions form are available at [www.anakarder.com](http://www.anakarder.com)). The journal's policy on publication and research ethics are in compliance with ICMJE, COPE and HEART Group rules.

The authors should acknowledge and provide information on grants, contracts or other financial support of the study provided by any foundations and institutions or firms.

The priority in acceptance of manuscripts for publication is given to original research manuscripts and reviews of high scientific and academic quality, in addition limited number of case reports and original images and other types of manuscripts are accepted for publication.

Statements and suggestions published in manuscripts are under the authors responsibility and do not reflect opinions of editors and their associates.

Manuscripts are considered for review only in cases if they have not been published previously elsewhere or are not currently under consideration in other journals. Only those data presented at scientific meetings (notification of scientific conference of session is required) in form of preliminary results - abstracts that does not exceed 200 words - could be accepted for consideration. The retraction requests of manuscripts, being under consideration and close to the final decision, without reasonable explanation will result in "reject" decision.

The first author of the paper accepted for publication in AJC should be in consent that editors could make corrections without changing the basic meaning of the text of the manuscript written either in Turkish or English languages.

To be accepted for publication, it is required that manuscripts should be original and of high scientific and academic quality, with probability of being cited.

## General Guidelines

Manuscripts and accompanying letters could be submitted to the Editor-in-Chief office through on-line manuscript submission system [www.anadolukardiyol.org](http://www.anadolukardiyol.org); you may find information at [www.anakarder.com](http://www.anakarder.com)

Rejected manuscripts, except artwork usually are not returned. All manuscripts are reviewed by editor, editor's consultant, associate editors, statistical consultants and at least three experts/referees. Proposal of names of three independent referees, who are unaware of the study and had no relationship with authors or author's institutions, but are experts in the field of the study, by first author is important for the journal.

In case of previous submission of manuscripts for consideration to other journals, submission of manuscripts together with referee's reports is mandatory and will facilitate the consideration.

Before sending manuscript for review to referees editor checks the adherence of the manuscript's format to general guidelines. The spelling and grammar errors are required to be corrected before submission of manuscript. The revised versions of manuscripts should include incorporated revisions highlighted. Manuscripts that do not comply with Instructions to Authors will not undergo peer-review.

Authors are required to submit the revision within 24 days, and the referee's evaluation period is limited by 21 days.

Manuscripts format should be in accordance with Uniform Requirements for Manuscripts Submitted to Biomedical Journals: Writing and Editing for Biomedical Publication (available at <http://www.icmje.org>).

The filled authorship contributions form must be submitted along with manuscript. The journal's rules on authorship contributions are in compliance with CSE (<http://www.councilscienceeditors.org/4a/pages/index.cfm?pageid=3376>) and ICMJE ([http://www.icmje.org/ethical\\_1aauthr.html](http://www.icmje.org/ethical_1aauthr.html)) recommendations.

Original Investigations and Reviews should be presented according to the guidelines: randomized study – CONSORT, observational study – STROBE, study on diagnostic accuracy – STARD, systematic reviews and meta-analysis PRISMA, animal experimental studies – ARRIVE, nonrandomized behavioural and public health intervention studies – TREND.

## Research Articles

**1. Original research articles:** Manuscript should not exceed 5000 words and should be accompanied by necessary number of tables and figures. Fifty references seem to be enough for confidence.

**1.1 Title page** is the first page of the manuscript, which should be uploaded as separate WinWord file and include: full names of authors with their last academic degrees and manuscript title consisted of no more than 50 characters. These should be followed by complete descriptions of the department, institutions and city, country where the work was done. If the study was performed at different institutions it should be noted by symbols. Full address for correspondence contains full name of the first author or responsible authors, postal and e-mail addresses, phone and fax numbers. If manuscripts content has been presented before, time and place of the conference should be denoted.

**1.2 Structured abstract**, in Turkish language should not exceed 250 words and consists of the Objective, Methods, Results and Conclusion sections. No more than 6 keywords concordant with NLM MeSH vocabulary terms (available at <http://www.nlm.nih.gov/mesh/MBrowser.html>) must follow the structured abstract.

**1.3 Structured abstract** in English language written due to the above mentioned in part 1.2 rules.

**1.4 Main text** includes Introduction, Methods, Results, Discussion, Study Limitations, Conclusions and References sections. It would be useful to present Methods, Results and Discussion parts with subsections and subtitles. Main text should not exceed 5000 words and should be written in Times New Roman 12 font style. Finally, acknowledgement to persons who significantly contributed to the study or assisted in preparing article should be done appropriately. The latter note should be sent by e-mail or uploaded to the system in form of separate "Acknowledgement" WinWord file.

**1.5 Statistical analysis** should be performed in accordance with guidelines on reporting statistics in medical journals (Altman DG, Gore SM, Gardner MJ, Pocock SJ. Statistical guidelines for contributors to medical journals. *Br Med J* 1983; 7: 1489-93). Describe software used for analysis. For parametric tests represent continuous variables as Means±Standard Deviation, while for nonparametric tests represent data as Median and range (Minimum- Maximum) or Median and interquartile range (25th and 75th percentiles). Whenever complex analyses are used support the relative risk, odds or hazard ratios values by providing confidence intervals and p values.

**1.6 References** are numbered in order of citation in the main text and are typed on separate page in double space fashion. Personal communications, unpublished data, manuscripts under publication processing are cited in the main text in parenthesis, but not in list of references. Those abstracts that had been published more than 2 years ago are not accepted as references.

Publications in kind of abstracts are noted in parenthesis (abstr). Authors are responsible for accuracy of references.

**Periodicals:**  
Standard journal article: Abbreviations of journal titles should be done in accordance with journal abbreviations used in Index Medicus (for journal abbreviations consult List of Journals indexed for MEDLINE published annually by NLM at <http://www.nlm.nih.gov/tsd/serials/fj.html>). In case of six or less authors numbers list of all authors is required. If number of authors exceeds seven, list first 6 authors followed by et al. A list of authors should be followed by the full title of the article, journal title, year, volume and page numbers.

**Example:** Muller C, Buttner HJ, Peterson J, Roskomun H. A randomized comparison of clopidogrel and aspirin versus ticlopidine and aspirin after placement of coronary artery stents. *Circulation* 2000; 101: 590-3.

**Books:**  
Chapter in a book: Sherry S. Detection of thrombi. In: Strauss HE, Pitt B, James AE, editors. *Cardiovascular Medicine*. St. Louis: Mosby; 1974. p. 273-85.

Personal author(s): Cohn PF. Silent myocardial ischemia and infarction. 3rd ed. New York: Marcel Dekker; 1993.

Editor (s), compiler(s) as author: Norman LJ, Redfern SJ, editors. *Mental health care for elderly people*. New York: Churchill Livingstone; 1996.

**Conference paper:**  
Benginson S, Sothern BG. Enforcement of data protection, privacy and security in medical informatics. In: Lun KC, Degoulet P, Piemme TE, Rienhoff O, editors. *MEDINFO 92. Proceedings of the 7th World Congress on Medical Informatics*; 1992 Sept 6-10; Geneva, Switzerland. Amsterdam: North-Holland; 1992. P.1561-5.

**Scientific or technical report:**  
Smith P, Golladay K. Payment for durable medical equipment billed during skilled nursing facility stays. Final report. Dallas (TX) Dept. of Health and Human Services (US). Office of Evaluation and Inspections: 1994 Oct. Report No: HHSIGOE 169200860.

**Dissertation:**  
Kaplan SI. Post-hospital home health care: the elderly access and utilization (dissertation). St. Louis (MO): Washington Univ. 1995.

**Article in electronic format:**  
Morse SS. Factors in the emergence of infectious diseases. *Emerg Infect Dis* (serial online) 1995 Jan-Mar (cited 1996 June 5): 1(1); (24 screens). Available from: <http://www.cdc.gov/ncidod/EID/cid.htm>.

**1.7. Diagrams, Tables and Figures:** The figures and pictures should not contain the names of patients, doctors or institutions. Figures and pictures should be sent to

the Editor-in-Chief office. They should be printed in separate from main text pages and numbered in order of citation in the text. The comments for tables, diagrams and figures are explained in a separate page with brief title. The sufficiently thick lines could be used while preparing of graphics, thus preventing the losses in the quality of graphics while decreasing their size. The largest appropriate and acceptable size of graphics is 8.9 cm or 16.17 cm in width. Figures should be done professionally and no gray colors be used. Used abbreviations should be explained in alphabetic order in the footnote of the table or figure's legend. Do not use Roman numbers in the numeration of tables and figures within text and their titles. The decimal numbers in the text, tables and figures should be separated by period. Especially, the text of tables should be easily understandable and explanatory and should not repeat the data presented in the main text. The pictures/art works in black and white, grey colors are published without additional costs for authors. The color pictures/art work will be published at additional costs - please contact the Editor-in-Chief office and AVES publishing house.

**Note:** In addition to printed version of pictures in case reports and original images published in the journal the video/movie images and additional static images are published in the journal's web site [www.anakarder.com](http://www.anakarder.com)

The requirements for web site video/movie and static images are:  
1. Static images should be submitted in one of the following formats: JPG, GIF, TIFF, BMP

2. Video/movie images should be submitted in following formats: MPEG, VMF  
3. The maximum size of the file should be no more than 2 MB  
4. Video/movie images and figures/photographs should be sent without description of doctor's or patient's names, institutions and places of origin.

The originality of tables and figures should be confirmed in the accompanying letter. In case of reproduction of tables and figures from other published sources, the appropriate citation should be done and the original source either in hardcopy or electronic (\*.pdf) format along with the obtained permission for publication from Copyright owner (publisher, journal or author(s)) should be submitted to the Editor-in-Chief office.

The rules for title page, references, figures and tables are applicable for all types of manuscripts.

## Special Parts

**2. Reviews:** are prepared by authors or by invited authors. This manuscript should contain the evaluation, discussion, analysis and synthesis of the newest and updated knowledge on topic, intended to be used in clinic, and should define the perspectives for further research. The author should be an expert and have cited published works in the area of interest.

**2.1 Unstructured abstract** limited to 250 words is required. No more than 6 keywords concordant with NLM MeSH vocabulary terms (available at <http://www.nlm.nih.gov/mesh/MBrowser.html>) must follow the unstructured abstract. Word count is limited by 5000 and references number is limited by 50.

**3. Editorials:** This type of article is a brief evaluation of published manuscripts by authority in the field of investigation other than referees of the journal. At the end of editorial usually a summary on clinical significance of the study is required.

**4. Case reports:** Interesting from diagnostic and educational point of view case reports concerning seldom, rare seen even by authorities, those one that usually diagnosed and managed with difficulties, and those cases which description is usually missing in clinical practice applications are published. Limited number of case reports is published. Articles accompanied by video/movie images have high priority for publishing. Case reports consist of introduction, case report, discussion and conclusion parts. Reference and word count numbers are limited (no more than 10 and 700 words), and no abstract is required.

**5. Scientific letter:** The articles in form of preliminary report aimed to announce the new scientific thoughts and data are accepted for publication as scientific letters. The content of the scientific letter should not contain subheadings and is limited by 900 words. The number of references is limited by 10, and number of figures and tables should not exceed 2.

**6. Letter to the Editor:** Letter to the Editor is one of the main reasons for publication of this journal. It discusses the importance of the published manuscripts, their missing and deficient sites and usually is limited by 5 references and do not exceed 500 words.

**7. Education:** Knowledge utilized in clinical applications, included in education curriculum of academic level and confirmed by recent research results should be represented.

**7.1 Unstructured abstract** limited to 250 words is required. No more than 6 keywords concordant with NLM MeSH vocabulary terms (available at <http://www.nlm.nih.gov/mesh/MBrowser.html>) must follow the unstructured abstract. Word count is limited by 5000 and references number is limited by 50.

**8. Original image:** The impressive and rare images reflecting important findings based on clinical science, shedding light on fundamental mechanisms of cardiovascular diseases, emphasizing anomalies, enlightening new treatment methods are accepted for publication. Articles with accompanying video/movie images have high priority for publishing. The article including the title, text and figure legends (without references) should not exceed 250 words. Original images are prepared according with the above-mentioned rules and are published in electronic only version.

**9. Historical notes:** The articles describing important historical events in cardiology (particularly for Turkey) and relevant disciplines, revealing new information on history of disease's diagnosis and treatment. The new historical findings should be the result of a proper research work on the topic. The content of the historical notes should not contain subheadings and is limited by 900 words. The number of references is limited by 10.

**10. Publication Ethics:** The material published in this section of the journal includes articles providing the contemporary information on publication ethics and cases of ethics misconduct. The articles are limited by 900 words and the number of references is limited by 10. You can find COPE charts on publication ethics at [http://www.publicationethics.org/files/u2/All\\_flowcharts.pdf](http://www.publicationethics.org/files/u2/All_flowcharts.pdf)

## İÇİNDEKİLER / CONTENTS

### EDİTÖRDEN / EDITORIAL

- Anadolu Kardiyoloji Dergisi yönetim toplantısı, gelişmeler, yine kayıplar, yeni kazanımlar 659  
*Management meeting of The Anatolian Journal of Cardiology, improvements, again our losses, new gains*  
Bilgin Timuralp, Eskişehir-Türkiye

### ÖZGÜN ARAŞTIRMALAR / ORIGINAL INVESTIGATIONS

- A survey for the evaluation of the training period of cardiology specialists in Turkey 661  
*Türkiye kardiyoloji uzmanlık eğitimi dönemi değerlendirme anketi*  
Bekir Serhat Yıldız, Mustafa Beyazıt Alkan, Hasan Güngör, İlker Gül, Murat Bilgin, Mustafa Akın, Sanem Nalbantgil, Mehdi Zoghi, İzmir, Muş-Turkey
- Diagnostic accuracy and clinical utility of echocardiographic indices for detecting left ventricular diastolic dysfunction 666  
in patients with coronary artery disease and normal ejection fraction  
*Ejeksiyon fraksiyonu normal olan koroner arter hastalarında sol ventrikül diyastolik işlev bozukluğunu saptamada kullanılan ekokardiyografik göstergelerin tanısal değeri ve klinik yararı*  
Necla Özer, Sercan Okutucu, Alper Kepez, Hakan Aksoy, Onur Sinan Deveci, Enver Atalar, Kenan Övünç, Serdar Aksöyek, Ankara, Eskişehir-Turkey
- Implications of tilt-table induced faint time in patients with reflex syncope 674  
*Refleks senkoplu hastalarda tilt-masası ile indüklenen bayılma süresinin değerlendirilmesi*  
Ümit Hıdır Ulaş, Kevin McNeeley, Di Zhang, Gisela Chelimsky, Thomas Chelimsky, Cleveland-OH-USA, Ankara-Turkey
- Relationship of brain natriuretic peptide with metabolic syndrome parameters: an observational study 678  
*Beyin natriüretik peptidin metabolik sendrom parametreleri ile ilişkisi: Gözlemsel bir çalışma*  
Sanem Öztekin, Özlem Karakurt, Nuray Yazihan, İlker Ünal, Ankara, Balıkesir, Adana-Turkey
- Relationship between heart-type fatty acid-binding protein levels and coronary artery disease in exercise 685  
stress testing: an observational study  
*Egzersiz stres testinde kalp-tipi yağ asidi-bağlayıcı protein düzeyleri ile koroner arter hastalığı arasındaki ilişki: Gözlemsel bir çalışma*  
Hatem Arı, Mehmet Tokaç, Yusuf Alihanoglu, Aysel Kıyıcı, Mehmet Kayrak, Mehtap Arı, Osman Sönmez, Hasan Gök, Konya-Turkey
- Increased neopterin levels and its association with angiographic variables in patients with slow coronary flow: 692  
an observational study  
*Yavaş koroner akımlı hastalarda artmış neopterin düzeyleri ve anjiyografik değişkenlerle birlikteliği: Gözlemsel bir çalışma*  
Ercan Varol, Mehmet Gülcan, Firdevs Aylak, Mehmet Özyayın, Recep Sütçü, Doğan Erdoğan, Abdullah Doğan, Isparta-Turkey
- Effect of oral contraceptive therapy on homocysteine and C-reactive protein levels in women: an observational study 698  
*Kadınlarda oral kontraseptif tedavisinin homosistein ve C-reaktif protein düzeyleri üzerine etkisi: Gözlemsel bir çalışma*  
Vajihe Norouzi, Morteza Seifi, Soudabeh Fallah, Mohsen Korani, Ali Samadikuchaksaraei, Tehran-Iran
- Kararsız anjina pectoris ve ST-elevasyonsuz miyokart enfarktüsü hastalarda değişik statinlerin, ezetimib/simvastatin 703  
kombinasyonunun hsCRP düzeyleri üzerine etkileri: Randomize bir çalışma  
*Effects of different statins, ezetimibe/simvastatin combination on hsCRP levels in unstable angina pectoris and non-ST elevation myocardial infarction patients: a randomized trial*  
Esat Namal, Nur Şener, Turgay Ulaş, Zafer Akçalı, Erkan Öztekin, Fatih Borlu, Şanlıurfa, İstanbul-Türkiye
- Novel method to evaluate the conduction velocity and conducting area during isthmus-dependent atrial flutter 711  
*İstmusa bağımlı atriyal flutter sırasında iletim hızı ve iletim alanının yeni bir yöntemle değerlendirilmesi*  
Alim Erdem, Ebru Gölcük, Zekeriya Küçükdurmaz, Ritsushi Kato, Motoki Hara, Takeshi Tobiume, Hitoshi Ishida, Masahiro Uenishi, Yurika Ishizuka, Nobuyuki Komiyama, Shigeyuki Nishimura, Kazuo Matsumoto, Sivas, İstanbul-Turkey, Hidaka/Saitama-Japan



## İÇİNDEKİLER / CONTENTS

- ▶ Editorial Comment/Editöryel Yorum: Typical atrial flutter. What's new? 717  
*Tipik atriyal flutter. Yeni olan nedir?*  
Philippe Maury, Gürbüz Murat, Toulouse-France
- ▶ Hipoksik iskemik ensefalopatili yenidoğanlarda sol ve sağ ventrikül "pulsed" ve doku Doppler miyokart performans indeks değerlerinin Z-skorla karşılaştırılması 719  
*Comparison of left and right ventricular pulsed and tissue Doppler myocardial performance index values using Z-score in newborns with hypoxic-ischemic encephalopathy*  
Hayrullah Alp, Sevim Karaaslan, Tamer Baysal, Bülent Oran, Rahmi Örs, Konya-Türkiye
- ▶ Arteriyel "switch" ameliyatı yapılan büyük arter transpozisyonlu hastalarımızın izlemi; basit ve kompleks transpozisyon olgularının karşılaştırılması 726  
*Follow-up of our patients with transposition of the great arteries and arterial switch operation; comparison of simple and complex transposition cases*  
Osman Akdeniz, Canan Ayabakan, Uygur Yörüker, Kürşad Tokel, Özlem Sarısoy, Rıza Türköz, Can Vuran, Bülent Sarıtaş, Çağrı Günaydın, Emre Özker, İstanbul-Türkiye

### DERLEME / REVIEW

- ▶ Diabetic cardiomyopathy 732  
*Diabetik kardiyomiyopati*  
Eser Acar, Dilek Ural, Ulaş Bildirici, Tayfun Şahin, İrem Yılmaz, Kocaeli-Turkey

### BİLİMSEL MEKTUP / SCIENTIFIC LETTER

- ▶ Angiography findings after late bidirectional cavopulmonary shunt operation at mid-term follow-up 738  
*İki yönlü geç kavopulmoner şant ameliyatından sonra orta süreli izlemde anjiyografi bulguları*  
Bülent Koca, Ayşe Güler Eroğlu, Selman Gökalp, Levent Saltık, Funda Öztunç, İstanbul-Turkey


### OLGU SUNUMLARI / CASE REPORTS

- ▶ Ventriküler destek aygıtı ve kardiyak defibrilatör takılı hastada başarılı VT ablasyonu 740  
*Successful VT ablation in a patient with ventricular assist device and implantable cardiac defibrillator*  
Yahya İslamoğlu, M. Kemal Aktaş, Habib Çil, Zuhale Artürk, Ebru Tekbaş, Mehmet Ali Elbey, Diyarbakır-Türkiye, Rochester-USA
- ▶ A mobile structure at the entrance of the left atrial appendage in a patient with malignant fibrous histiocytoma 741  
*Malign fibröz histiyositomasi olan bir hastada sol atriyal appendiks girişindeki hareketli yapı*  
Elif Elmas, Thorsten Kälisch, Martin Borggreffe, Dariush Haghi, Mannheim-Germany
- ▶ Catecholamine-induced cardiomyopathy and paraganglioneuroma in a pediatric patient 743  
*Bir çocuk hastada katekolamine bağlı kardiyomiyopati ve paraganglionöroma*  
Nazmi Narin, Ali Baykan, Sadettin Sezer, Sertaç Hanedan Onan, Kazım Üzüm, Mustafa Küçükaydın, Kayseri-Turkey

### EDİTÖRE MEKTUPLAR / LETTERS TO THE EDITOR

- ▶ Mitral valve surgery; from median sternotomy to closed chest procedures, from replacement to repair techniques/Clinical outcomes of mitral valve repair in mitral regurgitation: a prospective analysis of 100 consecutive patients 745  
*Mitral kapak cerrahisi, mediyan sternotomiden kapalı göğüs işlemlerine, replasmandan onarım tekniklerine/Mitral yetersizliğinde mitral kapak onarımının klinik sonuçları: Ardışık 100 hastanın prospektif analizi*  
Tayfun Aybek, Ankara-Turkey

## İÇİNDEKİLER / CONTENTS

- ▶ *E. coli* outbreak and myocarditis: a story in cardiology 746  
*E. coli* salgını ve miyokardit: Bir kardiyoloji öyküsü  
Viroj Wiwanitkit, Bangkok-Thailand
- ▶ Electrocardiographic diagnostic dilemma: gradual QRS widening recorded by rhythm Holter monitoring 746  
*Elektrokardiyografik tanısal ikilem: Ritim Holter kaydında QRS'lerin giderek genişlemesi*  
Okan Erdoğan, Burak Hünük, İstanbul-Turkey
- ▶ Acute left main coronary artery occlusion following TAVI and emergency solution 747  
*TAVI sonrası akut sol ana koroner arter tıkanması ve acil çözüm*   
Sinan Dağdelen, Hasan Karabulut, Cem Alhan, İstanbul-Turkey
- ▶ Emergency double-valve repair during acute aortic dissection type A operation 748  
*A tipi akut aort disseksiyonu onarımı sırasında acil çift-kapak tamiri*  
Altuğ Tuncer, Taylan Adademir, İstanbul-Turkey
- ▶ Diagnostic importance of aVR derivation in exercise stress testing for interpreting of multivessel and proximal LAD disease 749  
*Çok damar ve proksimal LAD lezyonlarının tanınması için yapılan egzersiz stres testinde aVR derivasyonunun tanısal önemi*  
Hatem Arı, Yusuf Alihanoğlu, Mehtap Arı, Mehmet Tokaç, Konya, Denizli-Turkey

### TARİHTEN NOTLAR / HISTORICAL NOTES

- ▶ Abbas Vesim Efendi (öl.1760) 751  
*Abbas Vesim Efendi (date of death-1760)*  
Esin Kahya, Ankara-Türkiye



### ANISINA / IN MEMORIAM

- ▶ Türkiye Yüksek İhtisas Hastanesi büyük emeği olan yapı taşlarından birini daha yitirdi 752  
*Türkiye Yüksek İhtisas Hospital has lost the major contributor and foundation-stone*  
Siber Göksel, İstanbul-Türkiye

### İNDEKSLER / INDEXES

- ▶ Yazar Dizini 753  
*Author Index*
- ▶ Konu Dizini 759  
*Subject Index*
- ▶ Elit Hakem Dizini 770  
*Elite Referee Index*

### E-SAYFA ÖZGÜN GÖRÜNTÜLER / E-PAGE ORIGINAL IMAGES

- ▶ "Broken heart" syndrome complicated by acute severe mitral regurgitation 753  
*Akut ciddi mitral yetmezliği ile komplike olan "kırık kalp" sendromu*   
Selami Demirelli, Şakir Arslan, Eftal Murat Bakırcı, Orhan Demir, Erzurum, Antalya-Turkey
- ▶ Cerebral and coronary artery aneurysms in a patient with Behçet's disease 754  
*Bir Behçet hastasında serebral ve koroner arter anevrizmaları*   
Sercan Okutucu, Uğur Nadir Karakulak, Umut Kalyoncu, Kudret Aytemir, Ankara-Turkey



## İÇİNDEKİLER / CONTENTS

- ▶ Transcatheter aortic valve implantation: A novel perspective by real-time three-dimensional transesophageal echocardiography E-32  
*Transkateter aort kapak implantasyonu: Gerçek zamanlı üç boyutlu transözofageal ekokardiyografi ile yeni bir bakış açısı*   
*Saide Aytekin, Yelda Tayyareci, Refik Erdim, Alp Burak Çatakoğlu, Belhan Akpınar, Vedat Aytekin, İstanbul-Turkey*
- ▶ Congenital aortic and pulmonary stenoses demonstrated by multislice computed tomography E-33  
*Çok kesitli bilgisayarlı tomografi ile gösterilen doğumsal aort ve pulmoner darlıklar*   
*Ahmet Güler, Can Yücel Karabay, Soe Moe Aung, Tülay Bayram, İstanbul-Turkey*
- ▶ Congenital giant aneurysm of the right atrium E-34  
*Doğumsal dev sağ atriyum anevrizması*  
*Mahmoud Zaqout, Daniel De Wolf, Gaza-Israel, Ghent-Belgium*