

The Anatolian Journal of Cardiology

Anatol J Cardiol • Volume 22 • Issue 3 • September 2019

Editor-in-Chief

Çetin Erol

Editor

Mustafa Kılıçkap

Advisory Board of This Issue

Mehmet Ağırbaşı

Tolga Aksu

Lale Dinç Asarcıklı

Hüseyin Ayhan

Murat Bıteker

Atıla Bitigen

Mahir Cengiz

Kerim Çağlı

Bilal Çuğlan

Abdullah Tuncay Demiryürek

Rıza Doğan

Berkay Ekici

Güliz Erdem

Okan Erdoğan

Nihan Kahya Eren

Murat Ersanlı

Nazmi Gültekin

Ümit Kervan

Umut Kocabaş

Şule Korkmaz

Kaan Okyay

Kanat Özışık

Selçuk Pala

İbrahim Sarı

Tamer Sayın

İbrahim Halil Tanboğa

Abdullah Tunçez

Serkan Ünlü

Yusuf Kenan Yalçınbaş

Kıvanç Yalın

Mehtap Yeni

Özlem Yıldırım Türk

Editorial

Initial combination treatment in the 2018 ESC/ESH hypertension guidelines

Giuseppe Mancia; Milan-Italy

Original Investigations

The cystathionine γ -lyase/hydrogen sulfide pathway mediates the trimetazidine-induced protection of H9c2 cells against hypoxia/reoxygenation-induced apoptosis and oxidative stress

Wenqing Zheng and Chao Liu; Weihai City-China

The effect of blood pressure variability on the prognosis of hypertensive patients

Ziad A. Taher et al.; Jeddah-Saudi Arabia

Visit-to-visit variability in low-density lipoprotein cholesterol is associated with adverse events in non-obstructive coronary artery disease

Jun Gu et al.; Shanghai-People's Republic of China

Midline one-stage complete unifocalization early outcomes from a single center

Oktay Korun et al.; Istanbul-Turkey

Invited Review

Comparison of left ventricular and biventricular pacing: Rationale and clinical implications

Polychronis Dilaveris et al.; Athens-Greece

Consensus Report

Turkish Society of Cardiology consensus report on recommendations for athletes with high-risk genetic cardiovascular diseases or implanted cardiac devices

Erdem Özel et al.; İzmir-Turkey

Case Reports

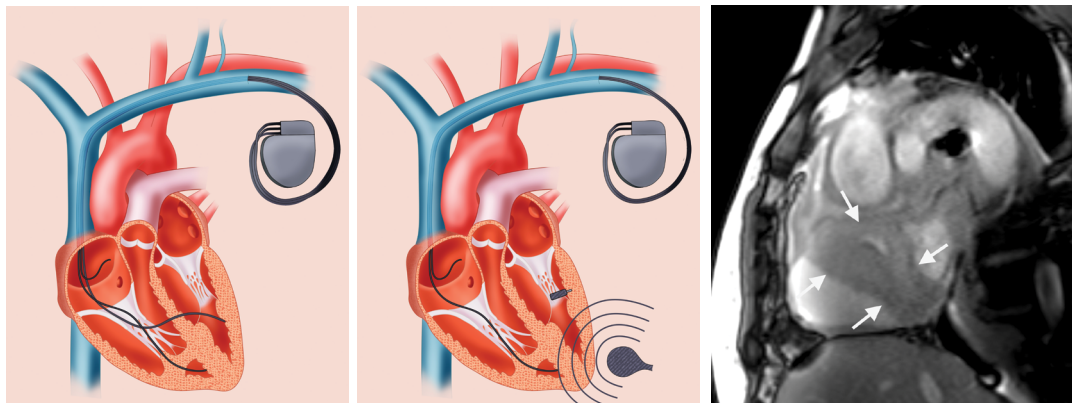
First case of cardiac amyloidosis presenting as right atrial mass

Aynur Acıbuca et al.; Adana-Turkey

Rare presentation and wide intrafamilial variability of Fabry disease: A case report and review of the literature

Sebastian Militaru et al.; Bucharest-Romania

Page: E-5



Editor-in-ChiefProf. Dr. Çetin Erol, *Ankara, Turkey***Editor**Mustafa Kılıçkap, *Ankara, Turkey***Associate Editors**

Adnan Abacı, *Ankara, Turkey*
 Rüçhan Akar, *Ankara, Turkey*
 Bülent Behlül Altunkeser, *Konya, Turkey*
 Serdal Arslan, *Sivas, Turkey*
 Ahmet Kaya Bilge, *İstanbul, Turkey*
 Hakim Çelik, *Şanlıurfa, Turkey*
 Recep Demirbağ, *Şanlıurfa, Turkey*
 Ş. Remzi Erdem, *Ankara, Turkey*
 İlkey Erdoğan, *Ankara, Turkey*
 Sadi Güleç, *Ankara, Turkey*
 Ali Gürbüz, *İzmir, Turkey*
 Serdar Kula, *Ankara, Turkey*

Selma Metintaş, *Eskişehir, Turkey*
 Kurtuluş Özdemir, *Konya, Turkey*
 Murat Özeren, *Mersin, Turkey*
 Leyla Elif Sade, *Ankara, Turkey*
 Asife Şahinarslan, *Ankara, Turkey*
 Ahmet Temizhan, *Ankara, Turkey*
 Ercan Tutar, *Ankara, Turkey*
 Omaç Tüfekçioğlu, *Ankara, Turkey*
 F. Ajlan Tükün, *Ankara, Turkey*
 Taner Ulus, *Eskişehir, Turkey*
 Aylin Yıldırım, *Ankara, Turkey*
 Mehmet Birhan Yılmaz, *İzmir, Turkey*

Editor-in-Chief Consultant
 Suna Kıraç, *Lefkoşe, KKTC*

Senior Consultant in Biostatistics
 Kazım Özdamar, *Eskişehir, Turkey*

Consultant in Biostatistics
 Fezan Mutlu, *Eskişehir, Turkey*

Previous Editor-in-ChiefBilgin Timuralp, *Eskişehir, Turkey***Editorial Board**

Ramazan Akdemir, *Sakarya, Turkey*
 Levent Akyürek, *Göteborg, Sweden*
 Azin Alizadehasl, *Tehran, Iran*
 Necmi Ata, *Eskişehir, Turkey*
 Saide Aytekin, *İstanbul, Turkey*
 Vedat Aytekin, *İstanbul, Turkey*
 Ljuba Bacharova, *Bratislava, Slovak Republic*
 Luigi P. Badano, *Udine, Italy*
 Anzel Bahadır, *Düzce, Turkey*
 Adrian Baranchuk, *Kingston, Ontario, Canada*
 Murat Biteker, *Muğla, Turkey*
 Eugene Braunwald, *Boston, MA, USA*
 Cahid Civelek, *St. Louis, MO, USA*
 Ali Emin Denктаş, *Houston, TX, USA*
 Polychronis Dilaveris, *Athens, Greece*
 Firat Duru, *Zurich, Switzerland*

Ertuğrul Ercan, *İzmir, Turkey*
 Okan Erdoğan, *İstanbul, Turkey*
 Özcan Erel, *Ankara, Turkey*
 Ali Gholamrezanezhad, *Tehran, Iran*
 Michael Gibson, *Boston, MA, USA*
 Orhan Gökbalp, *İzmir, Turkey*
 Bülent Görenek, *Eskişehir, Turkey*
 Okan Gülel, *Samsun, Turkey*
 Sema Güneri, *İzmir, Turkey*
 Yekta Gürlertop, *Edirne, Turkey*
 Murat Güvener, *Ankara, Turkey*
 Cemil İzgi, *London, UK*
 Diwakar Jain, *Philadelphia, USA*
 Erdem Kaşıkçioğlu, *İstanbul, Turkey*
 Cihançir Kaymaz, *İstanbul, Turkey*
 Mustafa Kılıç, *Denizli, Turkey*

Serdar Küçüköğlü, *İstanbul, Turkey*
 Peter Macfarlane, *Renfrewshire, Scotland*
 Robert W. Mahley, *San Francisco, CA, USA*
 Giuseppe Mancina, *Milan, Italy*
 G.B. John Mancini, *Vancouver BC, Canada*
 Anthony De Maria, *San Diego, CA, USA*
 Pascal Meier, *London, UK*
 Franz H. Messerli, *New York, USA*
 Sanem Nalbantgil, *İzmir, Turkey*
 Navin C. Nanda, *Birmingham, AL, USA*
 Yılmaz Nişancı, *İstanbul, Turkey*
 Hakan Oral, *Ann Arbor, MI, USA*
 Necla Özer, *Ankara, Turkey*
 Zeki Öngen, *İstanbul, Turkey*
 Mehmet Özkan, *İstanbul, Turkey*
 Sotirios N. Prapas, *Athens, Greece*

Fausto J. Pinto, *Lisbon, Portugal*
 Vedat Sansoy, *İstanbul, Turkey*
 Raşit Sayın, *Trabzon, Turkey*
 Mark V. Sherrid, *New York, USA*
 Horst Sievert, *Frankfurt, Germany*
 İlke Sipahi, *İstanbul, Turkey*
 Richard Sutton, *Monaco, Monaco*
 Ahmet Şaşmaz, *İstanbul, Turkey*
 S. Lale Tokgözoğlu, *Ankara, Turkey*
 Murat Tuzcu, *Cleveland, OH, USA*
 Dilek Ural, *İstanbul, Turkey*
 Ahmet Ünalır, *Eskişehir, Turkey*
 Selma Arzu Vardar, *Edirne, Turkey*
 Mehmet Yokuşoğlu, *Ankara, Turkey*
 Jose L. Zamorano, *Madrid, Spain*
 Wojciech Zareba, *New York, USA*
 Yuqing Zhang, *Beijing, China*



**TURKISH
 SOCIETY OF
 CARDIOLOGY**

**The Owner on behalf of
 the Turkish Society of Cardiology**

**Türk Kardiyoloji Derneği adına
 İmtiyaz Sahibi**

Mustafa Kemal EROL

Address : Nish İstanbul A Blok Kat: 8, No: 47-48
 Çobançesme Sanayi Cad. No: 11
 Yenibosna, Bahçelievler 34196
 İstanbul, Türkiye

Phone : +90 212 221 1730-38
 Fax : +90 212 221 1754
 E-mail : tkd@tkd.org.tr
 Web : www.tkd.org.tr

Editor-in-Chief Office

Phone : +90 (535) 461 41 62
 Fax : +90 (212) 221 17 54
 E-mail : info@anatoljcardiol.com

Assistants to the Editor-in-Chief

Ebru BOZ
 Elif SÖNMEZ



Publisher: Kare Yayıncılık (Kare Publishing)

Concord İstanbul Dumlupınar Mah. Yumurtacı Abdi Bey
 Cad. Cihan Sok. No: 15, B Blok Da: 162 Kat: 21, Kadıköy,
 İstanbul, TURKEY

Phone: +90 216 550 61 11

Fax: +90 216 550 61 12

http://www.kareyayincilik.com

E-mail: kareyayincilik@gmail.com

Yayın Türü: Uluslararası Süreli, Basım Tarihi: Eylül 2019
 Basım: Filmevi Grafik Renk Ayrımı Sistemleri San.
 Tic. LTD. ŞTİ. İstanbul-Türkiye

CONTENTS**EDITORIALS**

- ▶ Fixed risk factors at baseline versus variability of risk factors in predicting cardiovascular outcome 99
Mustafa Kılıçkap; Ankara-Turkey
- ▶ Initial combination treatment in the 2018 ESC/ESH hypertension guidelines 100
Giuseppe Mancia; Milan-Italy

ORIGINAL INVESTIGATIONS

- ▶ The cystathionine γ -lyase/hydrogen sulfide pathway mediates the trimetazidine-induced protection of H9c2 cells against hypoxia/reoxygenation-induced apoptosis and oxidative stress 102
Wenqing Zheng, Chao Liu; Weihai City-China
- ▶ The effect of blood pressure variability on the prognosis of hypertensive patients 112
Ziad A. Taher, Waleed W. Khayyat, Marwan M. Balubaid, Mohammed Y. Tashkandi, Haifaa A. Khayyat, Abdulhalim Jamal Kinsara; Jeddah-Saudi Arabia
- ▶ Visit-to-visit variability in low-density lipoprotein cholesterol is associated with adverse events in non-obstructive coronary artery disease 117
Jun Gu, Zhao-Fang Yin, Jian-An Pan, Jun-Feng Zhang, Chang-Qian Wang; Shanghai-People's Republic of China
- ▶ Midline one-stage complete unifocalization early outcomes from a single center 125
Oktay Korun, Okan Yurdakök, Mehmet Dedemoğlu, İlker Kemal Yücel, Ahmet Çelebi, Şefika Türkan Kudsioğlu, Ahmet Şaşmazel, Numan Ali Aydemir; İstanbul, Mersin-Turkey

INVITED REVIEW

- ▶ Comparison of left ventricular and biventricular pacing: Rationale and clinical implications 132
Polychronis Dilaveris, Christos-Konstantinos Antoniou, Panagiota Manolakou, Ioannis Skiadas, Konstantinos Konstantinou, Nikolaos Magkas, Panagiotis Xydis, Christina Chrysohoou, Konstantinos Gatzoulis, Dimitrios Tousoulis; Athens-Greece

CONSENSUS REPORT


- ▶ Turkish Society of Cardiology consensus report on recommendations for athletes with high-risk genetic cardiovascular diseases or implanted cardiac devices 140
AUTHORS: Erdem Özel, Mustafa Feridun Koşar, Emin Evren Özcan, Burak Hünük, Taner Ulus, Vedat Aytekin
REVIEWERS: Aylin Yıldırım, Bülent Özün, İzzet Erdinler, Ömer Akyürek; İzmir, İstanbul, Eskişehir, Ankara-Turkey

CONTENTS

CASE REPORTS

- ▶ First case of cardiac amyloidosis presenting as right atrial mass  152
Aynur Acıbuca, Sefa Okar, Tuba Canpolat, Zafer Koç, Hakan Güllü; Adana-Turkey
- ▶ Rare presentation and wide intrafamilial variability of Fabry disease: A case report  154
and review of the literature
Sebastian Militaru, Robert Adam, Lucian Dorobantu, Paolo Ferrazzi, Maria Iascone, Viorica Radoi, Ismail Gener, Bogdan A. Popescu, Ruxandra Jurcut; Bucharest-Romania, Bergamo-Italy

E-PAGE ORIGINAL IMAGES

- ▶ Infrequent concomitant mitral, pulmonary, and tricuspid valve prolapse associated with right ventricular failure: Correct diagnosis using multimodality imaging  E-5
Semih Kalkan, Ferhat Keten, İsmail Balaban, Cengiz Köksal, Gökhan Kahveci; İstanbul-Turkey
- ▶ Right atrial appendage aneurysm: Does it have to be resected? E-7
Hong-Hua Yue, Tai-Long Zhang, Xueshan Zhao, Zhong Wu; Sichuan-China