

Baş Editör / Editor-in-Chief
Bilgin Timuralp

Editör / Editor
Gulmira Kudaiberdieva

Bu Sayının Yayın Danışmanları
Advisory Board of This Issue

Levent Akyürek
İdris Ardıç
David Arroyo
Ahmet Çağrı Aykan
Okan Badıllıoğlu
Sibel Oğuzkan Balcı
Ali Baykan
Ayşe Baysal
Leif-Hendrik Boldt
Dirk L. Brutsaert
Mehmet Akif Büyükbeşe
Uğur Canpolat
Jie- Zhi Cheng
Çağlar Emre Çağlıyan
Recep Demirbağ
Emre Doğan
Dursun Duman
Cengiz Ermiş
Faruk Ertaş
Atıla İyisoy
Can Yücel Karabay
Nur Kebapçı
Sinan Altan Kocaman
Sang-Chol Lee
Marina Leitman
Angela Leung
A. Lutsyk
Francesco Natale
Altan Onat
Firat Özcan
Aydan Ongun Özdemir
Cengiz Öztürk
Ferhat Özyurtlu
Connie Rhee
Matthew A. Roberts
Nizal Sarrafzadegan
Engin Şahna
Fumiaki Uchiumi
Birsen Uçar
Hikmet Yorgun
Jianxun Wang

Özgün Araştırmalar / Original Investigations

Increased apolipoprotein A-I levels mediate the development of prehypertension among Turks
Apolipoprotein A-I düzeyi artışı Türklerde prehipertansiyon gelişmesine aracılık etmektedir

Altan Onat et al.; İstanbul, Ankara-Turkey

A new index (CHOLINDEX) in detecting coronary artery disease risk
Koroner arter hastalığı riskini belirlemede yeni bir index (CHOLINDEX)

Onur Akpınar et al.; Adana-Turkey

Epicardial adipose tissue is associated with increased left ventricular mass in hypertensives
Epikardiyal adipoz doku hipertansiflerde sol ventrikül kitle artışına eşlik eder

Turan Erdoğan et al.; Rize-Turkey

Subclinical left ventricular systolic dysfunction in mild-to-moderate rheumatic mitral stenosis
Hafif-orta romatizmal mitral darlığında subklinik sol ventrikül sistolik disfonksiyonu

Özlem Yıldırım Türk et al.; İstanbul-Turkey

Editorial Comment: Mitral stenosis-beyond valvular disease
Editöryel Yorum: Mitral stenosis-kapak hastalığının ötesi

Marina Leitman; Tel Aviv-İsrael

Atrial Fibrillation in Turkey: Epidemiologic Registry (AFTER) study design
Türkiye'de Atrial Fibrilasyon: Epidemiyolojik Kayıt (AFTER) çalışması dizaynı

Faruk Ertaş et al.; Diyarbakır-Turkey

Role of ECG changes in discriminating acute or chronic right ventricular pressure overload
Akut veya kronik sağ ventrikül basınç yüklenmesinin ayırt edilmesinde EKG değişikliklerinin rolü

Mehmet Mustafa Can et al.; İstanbul-Turkey

The role of tenascin-C and oxidative stress in rheumatic and congenital heart valve diseases
Tenascin-C ve oksidatif stresin romatizmal ve doğumsal kalp kapak hastalıklarındaki rolü

Zehra Karataş et al.; Konya-Turkey

Paraoxonase-1, malondialdehyde, mean platelet volume and atherosclerosis in familial Mediterranean fever
Ailevi Akdeniz ateşinde paraoksonaz-1, malondialdehit, ortalama trombosit hacmi ve ateroskleroz

Özlem Karakurt Arıtürk et al.; Balıkesir, Ankara, Şanlıurfa-Turkey

Thyroid functions after contrast agent administration for coronary angiography in euthyroids
Ötiroidlerde koroner anjiyografi için kontrast ajan uygulandıktan sonra tiroid fonksiyonları

Sevil Özkan et al.; İstanbul-Turkey

Derlemeler / Reviews

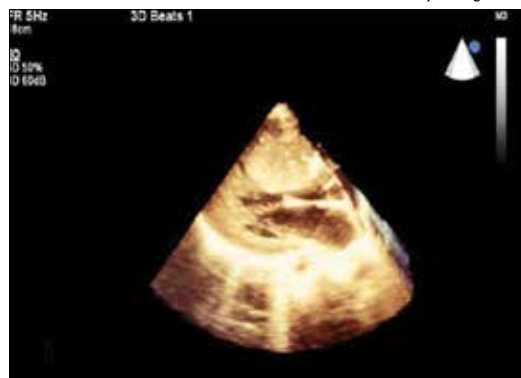
Aspirin resistance: Where are we now?
Aspirin direnci: Şimdi biz neredeyiz?

Okay Abacı et al.; İstanbul-Turkey

Kardiyak bilgisayarlı tomografi ve radyasyon
Cardiac computed tomography and radiation

Burak Sezenöz et al.; Ankara-Türkiye

Sayfa/Page: E-21



Baş Editör / Editor-in-Chief
Bilgin Timuralp, *Eskişehir, Türkiye*

Editör / Editor
Gulmira Kudaiberdieva, *Bishkek, Kyrgyzstan*

Baş Editör Yardımcıları / Associate Editors

Necmi Ata, *Eskişehir, Türkiye*
Mehmet Bilge, *Ankara, Türkiye*
Sanem Nalbantgil, *İzmir, Türkiye*

Kurtuluş Özdemir, *Konya, Türkiye*
İnan Soydan, *İzmir, Türkiye*
Mehdi Zoghi, *İzmir, Türkiye*

Bölüm Editörleri / Section Editors

Hipertansiyon / Hypertension
Alparslan Birdane, *Eskişehir, Türkiye*

Metabolik Sendrom / Metabolic Syndrome
Sadi Güleç, *Ankara, Türkiye*

Pediyatrik Kardiyoloji / Pediatric Cardiology
Ercan Tutar, *Ankara, Türkiye*

Kalp Yetersizliği / Heart Failure
Yüksel Çavuşoğlu, *Eskişehir, Türkiye*

İnvaziv Kardiyoloji / Invasive Cardiology
Yılmaz Nişancı, *İstanbul, Türkiye*

Kardiyovasküler Cerrahi / Cardiovascular Surgery
Ahmet Tulga Ulus, *Ankara, Türkiye*

Ekokardiyografi / Echocardiography
Berrin Umman, *İstanbul, Türkiye*

Baş Editör Danışmanı / Editor-in-Chief Consultant

Suna Kırac, *Denizli, Türkiye*

Biyoistatistik Baş Danışmanı / Senior Consultant in Biostatistics

Kazım Özdamar, *Eskişehir, Türkiye*

Biyoistatistik Danışmanları / Consultants in Biostatistics

Canan Baydemir, *Eskişehir, Türkiye*

İlker Ünal, *İzmir, Türkiye*

Uluslararası Yayın Kurulu / International Editorial Board

Adnan Abacı, *Ankara, Türkiye*
Kamil Adalet, *İstanbul, Türkiye*
Ramazan Akdemir, *Ankara, Türkiye*
Levent Akyürek, *Göteborg, Sweden*
Tayfun Aybek, *Ankara, Türkiye*
Mehmet Ateş, *İzmir, Türkiye*
Saide Aytekin, *İstanbul, Türkiye*
Vedat Aytekin, *İstanbul, Türkiye*
Ljuba Bacharova, *Bratislava, Slovak Republic*
Luiggi P. Badano, *Udine, Italy*
Gani Bajraktari, *Prishtina, Kosovo*
Işık Başar, *İstanbul, Türkiye*
George A. Beller, *Charlottesville VA, USA*
Ahmet Birand, *İstanbul, Türkiye*
Dirk L. Brutsaert, *Antwerp, Belgium*
Gerald D. Buckberg, *Los Angeles, CA, USA*
Cahid Civelek, *St. Louis, MO, USA*
Ubeydullah Deligönül, *Tyler TX, USA*
Ufuk Demirkılıç, *Ankara, Türkiye*
Ertan Demirtaş, *Ankara, Türkiye*
Ali Emin Denktaş, *Houston, TX, USA*
Polychronis Dilaveris, *Athens, Greece*
Fırat Duru, *Zurich, Switzerland*
Rasim Enar, *İstanbul, Türkiye*
Oktay Eray, *Antalya, Türkiye*
Ertuğrul Ercan, *İzmir, Türkiye*
Okan Erdoğan, *İstanbul, Türkiye*

Ali Ergin, *Kayseri, Türkiye*
Çetin Erol, *Ankara, Türkiye*
Ali Serdar Fak, *İstanbul, Türkiye*
Roberto Ferrari, *Ferrara, Italy*
Armen Y. Gasparyan, *West Midlands, UK*
Ali Gholamrezaezhad, *Tehran, Iran*
Hasan Gök, *Konya, Türkiye*
Bülent Görenek, *Eskişehir, Türkiye*
Sema Güneri, *İzmir, Türkiye*
Deniz Güzelsoy, *İstanbul, Türkiye*
Masayasu Hiraoka, *Tokyo, Japan*
Coşkun İkizler, *Ankara, Türkiye*
Barış İlerigelen, *İstanbul, Türkiye*
Gökhan İpek, *İstanbul, Türkiye*
Erkan İriz, *Ankara, Türkiye*
Diwakar Jain, *Philadelphia, USA*
Charles Jazra, *Bawchrieh, Lebanon*
Göksel Kahraman, *Kocaeli, Türkiye*
Mehmet Kaplan, *İstanbul, Türkiye*
Sezer Karcier, *İstanbul, Türkiye*
Erdem Kaşıkçioğlu, *İstanbul, Türkiye*
Cihangir Kaymaz, *İstanbul, Türkiye*
Mustafa Kılıç, *Denizli, Türkiye*
Serdar Kula, *Ankara, Türkiye*
Serdar Küçüköğlü, *İstanbul, Türkiye*
Hakan Kültürsay, *İzmir, Türkiye*
Samuel Levy, *Marseille, France*

Jason M. Lazar, *New York, USA*
Peter Macfarlane, *Renfrewshire, Scotland*
Robert W. Mahley, *San Francisco, CA, USA*
G.B. John Mancini, *Vancouver BC, Canada*
Matti Mänttari, *Helsinki, Finland*
Barry J. Maron, *Minnesota, USA*
Pascal Meier, *London, UK*
Franz H. Messerli, *New York, USA*
Haldun Müderrisoğlu, *Ankara, Türkiye*
İstemi Nalbantgil, *İzmir, Türkiye*
Navin C. Nanda, *Birmingham, AL, USA*
Altan Onat, *İstanbul, Türkiye*
Hakan Oral, *Ann Arbor, MI, USA*
M. Remzi Önder, *İzmir, Türkiye*
Zeki Öngen, *İstanbul, Türkiye*
Necla Özer, *Ankara, Türkiye*
Mehmet Bülent Özün, *Ankara, Türkiye*
Mehmet Özkan, *İstanbul, Türkiye*
Süheyla Özkutlu, *Ankara, Türkiye*
Azmi Özler, *İstanbul, Türkiye*
Ahmet Fatih Özyazıcıoğlu, *Bursa, Türkiye*
Sotirios N. Prapas, *Athens, Greece*
Shahbudin Rahimtoola, *Los Angeles, CA, USA*
Vedat Sansoy, *İstanbul, Türkiye*
Muhammed Saric, *New York, USA*
Murat Sezer, *İstanbul, Türkiye*
Mark V. Sherrid, *New York, USA*

Horst Sievert, *Frankfurt, Germany*
İlke Sipahi, *İstanbul, Türkiye*
Hulki Meltem Sönmez, *Aydın, Türkiye*
Richard Sutton, *London, UK*
Ahmet Şaşmazel, *İstanbul, Türkiye*
Zeynep Tartan, *İstanbul, Türkiye*
Oğuz Taşdemir, *Ankara, Türkiye*
Ahmet Temizhan, *Ankara, Türkiye*
Adam Timmis, *London, England*
S. Lale Tokgözoğlu, *Ankara, Türkiye*
Oktay Tutarel, *Hannover, Germany*
Murat Tuzcu, *Cleveland, OH, USA*
Volkan Tuzcu, *İstanbul, Türkiye*
Sabahattin Umman, *İstanbul, Türkiye*
Dilek Ural, *Kocaeli, Türkiye*
Ahmet Ünalır, *Eskişehir, Türkiye*
Marc A. Vos, *Utrecht, Netherlands*
Galen Wagner, *Durham, NC, USA*
Hein Wellens, *Maastricht, Netherlands*
Nuran Yazıcıoğlu, *İstanbul, Türkiye*
Murat Yeşil, *İzmir, Türkiye*
Remzi Yılmaz, *Şanlıurfa, Türkiye*
Kiyoshi Yoshida, *Okayama, Japan*
Mehmet Yokuşoğlu, *Ankara, Türkiye*
Jose L. Zamorano, *Madrid, Spain*
Wojciech Zareba, *New York, USA*



Genel Yayın Yönetmeni / Executive Editor
İbrahim KARA

Yayın Koordinatörleri / Publication Coordinators
Sevilay ARDIÇ NAYİR
Gökhan ÇİMEN
Ali ŞAHİN

Proje Asistanı / Project Assistant
Sinan Gökborü BÜNCÜ

Grafik Departmanı / Graphic Department
Ünal ÖZER
Neslihan YAMAN
Merve KURT

Yayıncı / Publisher

AVES
Adres/Address: Kızılelma Cad.
No:5/3 34096 Fındıklı / İstanbul
Telefon/Phone: +90 212 589 00 53
Faks/Fax: +90 212 589 00 94
E-posta/E-mail: info@avesyayincilik.com

Basım Tarihi / Printing Date
Haziran 2013 / June 2013

Yayın Türü / Publishing Type
Yerel Süreli / Local Periodical

ISSN 1302-8723 • E-ISSN 1308-0032

Baş Editör Ofis Asistanı:

Betül TUNTAŞ
Tel: +90 222 229 15 65
Faks: +90 222 229 15 85
E-posta: info@anakarder.com
btimur@ogu.edu.tr

Baskı / Printing

ADA Ofset Matbaacılık
Tic. Ltd. Şti., Litros Yolu
2. Matbaacılar S. E Blok
No: (ZE) 1. Kat
Topkapı, İstanbul
Tel: +90 212 567 12 42

Anadolu Kardiyoloji Dergisi

Eskişehir Osmangazi Üniversitesi (ESOGÜ)
tarafından kısmen desteklenmektedir.

The Anatolian Journal of Cardiology is partly
supported by University of
Eskişehir Osmangazi (ESOGÜ).

ESKİŞEHİR OSMANGAZİ ÜNİVERSİTESİ
MEŞELİK KAMPÜSÜ 26480 ESKİŞEHİR
Tel: +90 222 239 71 48
Faks: +90 222 239 54 00

AMAÇ VE KAPSAM

Anadolu Kardiyoloji Dergisi kardiyoloji konulu, yayın dili hem Türkçe hem İngilizce olan, bağımsız ve önyargısız çift-kör hakemlik (peer-review) ilkelerine dayanan uluslararası, periyodik bir dergidir. Anadolu Kardiyoloji Dergisi Şubat, Mart, Mayıs, Haziran, Ağustos, Eylül, Kasım ve Aralık aylarında olmak üzere yılda 8 sayı olarak yayınlanır.

Anadolu Kardiyoloji Dergisi'nin hedefi uluslararası düzeyde nitelikli, sürekli ve kardiyoloji konusunda özgün bir periyodik olarak klinik ve bilimsel açıdan en üst düzeyde orijinal araştırmaları yayınlamaktır. Bununla birlikte eğitim ile ilgili temel yenilikleri kapsayan derlemeler, editöryel kısa yazılar, olgu sunumları, orijinal görüntüler ve geniş kardiyoloji kesimlerinin konular hakkındaki deneyimlerini ve eleştirilerini içeren mektuplar ve sosyal kardiyoloji konulu yazılar yayınlamaktır.

Derginin hedef kitlesi kardiyoloji, çocuk kardiyoloji, kardiyovasküler cerrahi ve iç hastalıkları uzmanları, pratisyen hekimler ve tüm ilgili branşlardaki uzmanlardır.

Derginin editöryel ve yayın işleyişi ICMJE, COPE ve HEART Grubu standartları çerçevesinde yürütülmektedir.

Telif Hakkı, Çıkar Çatışma Bildirimi ve Yazar Katkı formları www.anakarder.com adresimizde mevcuttur.

Anadolu Kardiyoloji Dergisi; Science Citation Index Expanded, Journal Citation Reports, Index Medicus/Medline/PubMed, EMBASE, Scopus, CINAHL, Gale/Cengage Learning, EBSCO, DOAJ, ProQuest, Index Copernicus ve Tübitak/Ulakbim Türk Tıp Dizini tarafından indekslenmektedir.

Anadolu Kardiyoloji Dergisi'nin gelirleri abone ücretleri ve ticari firmalardan sağlanan reklamlardan oluşmaktadır.

Abone İşlemleri

Derginin tüm sayılarının tam metinlerine ücretsiz olarak www.anakarder.com adresinden ulaşılabilir. Basılı dergiye abone olmak isteyen kişiler web sayfasındaki abone formunu doldurmalı ve Yayinevine başvurmalıdır.

Yayinevi : AVES-İbrahim Kara
Adres : Kızılelma cad. 5/3 34096
Fındıkzade-İstanbul
Tel. : 0212 589 00 53
Faks : 0212 589 00 94
Web sayfası : www.avesyayincilik.com
E-posta : info@avesyayincilik.com

Baskı İzinleri ve Tekrar Baskılar

Baskı izni ve Tekrar Baskılar için başvurular Yayinevi'ne yapılmalıdır.

Yayinevi : AVES-İbrahim Kara
Adres : Kızılelma Cad. 5/3 34096 Fındıkzade-İstanbul
Telefon: : +90 212 589 00 53
Faks : +90 212 589 00 94
Web sayfası : www.avesyayincilik.com
E-posta: : info@avesyayincilik.com

Reklam

Reklam ile ilgili başvurular Yayinevine yapılmalıdır.

Yayinevi : AVES-İbrahim Kara
Adres : Kızılelma cad. 5/3 34096
Fındıkzade-İstanbul
Tel. : 0212 589 00 53
Faks : 0212 589 00 94
Web sayfası : www.avesyayincilik.com
E-posta : info@avesyayincilik.com

Yazarlara Bilgi

Yazarlara Bilgi dergi sayfalarında ve www.anakarder.com web sayfasında yayınlanmaktadır.

Materyal Sorumluluk Reddi

Anadolu Kardiyoloji Dergisi'nde yayınlanan tüm yazılarda görüş ve raporlar yazar(lar)ın görüşüdür ve Editör, editöryel kurul ya da yayıncının görüşü değildir; Editör, editöryel kurul ve yayıncı bu yazılar için herhangi bir sorumluluk kabul etmemektedir.

Dergimizde asitsiz kağıt kullanılmaktadır.

AIMS AND SCOPE

The Anatolian Journal of Cardiology is the double-blind peer-reviewed, published in Turkish and English languages international periodical on cardiology. The Anatolian Journal of Cardiology is published 8 times per year (February, March, May, June, August, September, November and December).

The aim of the Anatolian Journal of Cardiology is to publish research articles on original issues of cardiology of the highest clinical and scientific quality at the international level. Along with this, it publishes reviews covering fundamental innovations and dealing with education, short editorial articles, original case reports and images, letters on experience relevant to broad cardiology issues and critiques, as well as issues on social cardiology.

The journal's audience includes cardiologists, pediatric cardiologists, cardiovascular surgeons, internal medicine specialists, practitioners and specialists of all relevant disciplines.

The journal's editorial and publishing process is adherent to standards of ICMJE, COPE, and HEART Group.

Copyright Transfer, Conflict of Interest Declaration and Authorship Contributions forms are available at www.anakarder.com.

The Anatolian Journal of Cardiology is indexed in Science Citation Index Expanded, Journal Citation Reports, Index Medicus/Medline/PubMed, EMBASE, Scopus, CINAHL, Gale/Cengage Learning, EBSCO, DOAJ, ProQuest, Index Copernicus and Tübitak/Ulakbim Turkish Medical Database.

The funding sources of the journal are advertising and subscription.

Subscription information

The access to all full-text issues of the journal is free at www.anakarder.com. To subscribe to the print issues of the journal please fill the subscription form at www.anakarder.com and contact the Publisher.

Publisher : AVES-İbrahim Kara
Address : Kızılelma cad. 5/3 34096
Fındıkzade-İstanbul
Phone : +90 212 589 00 53
Fax : +90 212 589 00 94
Web page : www.avesyayincilik.com
E-mail : info@avesyayincilik.com

Permissions and Reprints

Permissions for reproduction of materials published and Reprints in the Anatolian Journal of Cardiology should be requested at Publisher:

Publisher : AVES-İbrahim Kara
Address : Kızılelma Cad. 5/3 34096 Fındıkzade-İstanbul-Turkey
Phone : +90 212 589 00 53
Fax : +90 212 589 00 94
Web page : www.avesyayincilik.com
E-mail : info@avesyayincilik.com

Advertising

For requests concerning advertising, please contact Publisher.

Publisher : AVES-İbrahim Kara
Address : Kızılelma cad. 5/3 34096
Fındıkzade-İstanbul
Phone : +90 212 589 00 53
Fax : +90 212 589 00 94
Web page : www.avesyayincilik.com
E-mail : info@avesyayincilik.com

Instructions for authors

Instructions for authors are published in the journal pages and could be accessed at the web site of the journal - www.anakarder.com

Material Disclaimer

Statements or opinions expressed in the manuscripts published in the Anatolian Journal of Cardiology reflect the views of the author(s) and not the opinions of the editors, the editorial board and the publisher; the editors, the editorial board and the publisher disclaim any responsibility or liability for such materials.

The journal is printed on an acid-free paper.

INSTRUCTIONS TO AUTHORS

Editor-in-Chief: Professor Dr. Bilgin TIMURALP
Address of Correspondence: Anadolu Kardiyoloji Dergisi
Kızılay Cad. 5/3 34096 Fındıklıca-Istanbul / Turkey
Phone : +90 222 229 15 65 - +90 533 966 48 67
Fax : +90 222 229 15 85
Web page: www.anakardder.com
E-mail: btimur@ogu.edu.tr - info@anakardder.com

The Anatolian Journal of Cardiology, being a double-blind peer-reviewed journal, publishes all articles on clinical cardiology with clear clinical relevance including experimental, fundamental and original clinical studies, postgraduate education on cardiology, investigations concerning especially Turkish public health, case reports, relevant letters with questions, answers and contributions, history of cardiology, publication and research ethics, as well as letters on expected, applied and changed relations between State institutions and physicians, works and developments of Turkish and World Societies of Cardiology. The referee's board that advises the selection of papers for publication by Editor consists of the elected advisory experts of the journal and is selected from independent national and international experts in the relevant field. The Anatolian Journal of Cardiology is published 8 times per year, including February, March, May, June, August, September, November and December.

Proper use of Turkish language is of special importance. Turkish Language Institution dictionary and orthography guide together with dictionary of cardiology terms published by Turkish Society of Cardiology should be taken as basic for literary language. Papers written in English language are particularly supported and encouraged.

An approval of research protocols by Ethics Committee in accordance with international agreements (Helsinki Declaration of 1975, revised 2008 - available at <http://www.na.net/en/30publications/10policies/b3/index.html>), "Guide for the care and use of laboratory animals - www.nap.edu/catalog/5140.html) is required for experimental, clinical and drug studies.

The submission of a written document with institutional approval of Ethics Committee or equivalent confirming the research protocol, even some case reports, are performed in frame of general ethical rules, is mandatory.

The signed statement of scientific contributions and responsibilities of all authors and statement on absence of conflict of interests are required. (ICMJE Form for Disclosure of Potential Conflicts of Interest and Authorship Contributions form is available at www.anakardder.com). The journal's policy on publication and research ethics is in compliance with ICMJE, COPE and HEART Group rules.

The authors should acknowledge and provide information on grants, contracts or other financial support of the study provided by any foundations and institutions or firms.

The priority in acceptance of manuscripts for publication is given to original research manuscripts and reviews of high scientific and academic quality, in addition limited number of case reports and original images and other types of manuscripts are accepted for publication.

Statements and suggestions published in manuscripts are under the authors responsibility and do not reflect opinions of editors and their associates.

Manuscripts are considered for review only in cases if they have not been published previously elsewhere or are not currently under consideration in other journals. Only those data presented at scientific meetings (notification of scientific conference of session is required) in form of preliminary results - abstracts that does not exceed 200 words - could be accepted for consideration.

The retraction requests of manuscripts, being under consideration and close to the final decision, without reasonable explanation will result in "reject" decision.

The authors of the paper accepted for publication in AJC should be in consent of that editors could make corrections without changing the presented data or the basic meaning of the text of the manuscript written either in Turkish or English languages.

To be accepted for publication, it is required that manuscripts should be original and of high scientific and academic quality, with probability of being cited.

General Guidelines

Manuscripts and accompanying letters should be submitted to the Editor-in-Chief office through on-line manuscript submission system www.anadolukardiyoloderg.com; you may find information at www.anakardder.com

Rejected manuscripts, except artwork usually are not returned. All manuscripts are reviewed by editors, editor's consultant, statistical consultants and at least three experts/referees. Proposal of names of three independent referees, who are unaware of the study and had no relationship with authors or author's institutions, but are experts in the field of the study, by first author is important for the journal.

In case of previous submission of manuscripts for consideration to other journals, submission of manuscripts together with referee's reports is mandatory and will facilitate the consideration.

Before sending manuscript for review to referees editor checks the adherence of the manuscript's format to general guidelines. The spelling and grammar errors are required to be corrected before submission of manuscript. The revised versions of manuscripts should include incorporated revisions highlighted. Manuscripts that do not comply with Instructions to Authors will not undergo peer-review.

Authors are required to submit the revision within 24 days, and the referee's evaluation period is limited by 21 days.

Manuscripts format should be in accordance with Uniform Requirements for Manuscripts Submitted to Biomedical Journals: Writing and Editing for Biomedical Publication (available at <http://www.icmje.org/>).

The filled authorship contributions form must be submitted along with manuscript. The journal's rules on authorship contributions are in compliance with CSE (<http://www.councilscienceeditors.org/4a/pages/index.cfm?pageid=3376>) and ICMJE (http://www.icmje.org/ethical_1author.html) recommendations.

Starting from June 2012, in order to be considered for review, it is obligatory for the case reports and original images submitted to the Anatolian Journal of Cardiology that

the first authors must subscribe to the journal for at least one year. This obligation is needed to begin the review process and does not provide any priority in acceptance or publication procedures. The manuscript of the subscriber author is reviewed according to the instructions and principles defined under the related titles, General Guidelines and Special Parts. One-year subscription price is 220 \$ and it is necessary to contact with publication house: AVES - +90 212 588 00 53 - info@avesyayincilik.com

Original Investigations and Reviews should be presented according to the guidelines: randomized study - CONSORT, observational study - STROBE, study on diagnostic accuracy - STARD, systematic reviews and meta-analysis PRISMA, animal experimental studies - ARRIVE, nonrandomized behavioral and public health intervention studies - TREND.

Research Articles

1. Original research articles: Manuscript should not exceed 5000 words and should be accompanied by necessary number of tables and figures. Fifty references seem to be enough for confidence.

1.1 Title page is the first page of the manuscript, which should be uploaded as separate Word file and include: full names of authors with their last academic degrees and manuscript title consisted of no more than 50 characters. These should be followed by complete descriptions of the department, institutions and city, country where the work was done. If the study was performed at different institutions it should be noted by symbols. Full address for correspondence contains full name of the first author or responsible authors, postal and e-mail addresses, phone and fax numbers. If manuscripts content has been presented before, time and place of the conference should be denoted.

1.2 Structured abstract in Turkish language should not exceed 250 words and consists of the Objective, Methods, Results and Conclusion sections. No more than 6 keywords concordant with NLM MeSH vocabulary terms (available at <http://www.nlm.nih.gov/mesh/MBrowser.html>) must follow the structured abstract.

1.3 Structured abstract in English language written due to the above mentioned in part 1.2 rules.

1.4 Main text includes Introduction, Methods, Results, Discussion, Study Limitations, Conclusions and References sections. It would be useful to present Methods, Results and Discussion parts with subsections and subtitles. Main text should not exceed 5000 words and should be written in Times New Roman 12 font style. Finally, acknowledgement to persons who significantly contributed to the study or assisted in preparing article should be done appropriately. The latter note should be sent by e-mail or uploaded to the system in form of separate "Acknowledgement" Word file.

1.5 Statistical analysis should be performed in accordance with guidelines on reporting statistics in medical journals (Altman DG, Gore SM, Gardner MJ, Pocock SJ. Statistical guidelines for contributors to medical journals. *Br Med J* 1993; 7; 1489-93). Describe software used for analysis. For parametric tests represent continuous variables as Means±Standard Deviation, while for nonparametric tests represent data as Median and range (Minimum- Maximum) or Median and interquartile range (25th and 75th percentiles). Whenever complex analyses are used support the relative risk, odds or hazard ratios values by providing confidence intervals and p values.

1.6 References are numbered in order of citation in the main text and are typed on separate page in double space fashion. Personal communications, unpublished data, manuscripts under publication processing are cited in the main text in parenthesis, but not in list of references. Those abstracts that had been published more than 2 years ago are not accepted as references.

Publications in kind of abstracts are noted in parenthesis (abstr.). Authors are responsible for accuracy of references.

Periodicals:

Standard journal article: Abbreviations of journal titles should be done in accordance with journal abbreviations used in Index Medicus (for journal abbreviations consult List of Journals indexed for MEDLINE published annually by NLM at <http://www.nlm.nih.gov/bsd/serials/jl.html>). In case of six or less authors numbers list of all authors is required. If number of authors exceeds seven, list first 6 authors followed by et al. A list of authors should be followed by the full title of the article, journal title, year, volume and page numbers.

Example: Muller C, Buttner HJ, Peterson J, Roskomun H. A randomized comparison of clopidogrel and aspirin versus tiopidine and aspirin after placement of coronary artery stents. *Circulation* 2000; 101: 590-3.

Books:

Chapter in a book: Sherry S. Detection of thrombi. In: Strauss HE, Pitt B, James AE, editors. *Cardiovascular Medicine*. St Louis: Mosby; 1974. p. 273-85.

Personal author(s): Cohn PF. Silent myocardial ischemia and infarction. 3rd ed. New York: Marcel Dekker; 1993.

Editor (s), compiler(s) as author: Norman LJ, Redfern SJ, editors. *Mental health care for elderly people*. New York: Churchill Livingstone; 1996.

Conference paper:

Benignsson S, Sotheman BG. Enforcement of data protection, privacy and security in medical informatics. In: Lun K, Dequelet P, Plemme TE, Riehoff O, editors. *MEDINFO 92. Proceedings of the 7th World Congress on Medical Informatics*; 1992 Sept 6-10; Geneva, Switzerland. Amsterdam: North-Holland; 1992. P. 1561-5.

Scientific or technical report:

Smith P, Golladay K. Payment for durable medical equipment billed during skilled nursing facility stays. Final report. Dallas (TX) Dept. of Health and Human Services (US). Office of Evaluation and Inspections: 1994 Oct. Report No: HHSIGDE 169200860.

Dissertation:

Kaplan SI. Post-hospital home health care: the elderly access and utilization (dissertation). St. Louis (MO): Washington Univ. 1995.

Article in electronic format:

Morse SS. Factors in the emergence of infectious diseases. *Emerg Infect Dis* (serial online) 1995. Jan-Mar (cited 1996 June 5); 1(1): (24 screens). Available from: <http://www.cdc.gov/ncidod/EID/cid.htm>.

1.7. Diagrams, Tables and Figures: The figures and pictures should not contain the names of patients, doctors or institutions. Figures and pictures should be sent to the Editor-in-Chief office. They should be printed in separate from main text pages and

numbered in order of citation in the text. The comments for tables, diagrams and figures are explained in a separate page with brief title. The sufficiently thick lines could be used while preparing graphics, thus preventing the losses in the quality of graphics while decreasing their size. The largest appropriate and acceptable size of graphics is 8-9 cm or 16-17 cm in width. Figures should be done professionally and no gray colors be used. Used abbreviations should be explained in alphabetic order in the footnote of the table or figure's legend. Do not use Roman numbers in the numeration of tables and figures within text and their titles. The decimal numbers in the text, tables and figures should be separated by period. Especially, the text of tables should be easily understandable and explanatory and should not repeat the data presented in the main text. The pictures/art works in black and white, grey colors are published without additional costs for authors. The color pictures/art work will be published at additional costs - please contact the Editor-in-Chief office and AVES publishing house.

Note: In addition to printed version of pictures in case reports and original images published in the journal the video/movie images and additional static images are published in the journal's web site www.anakardder.com

The requirements for web site video/movie and static images are:
1. Static images should be submitted in one of the following formats: JPG, GIF, TIFF, BMP
2. Video/movie images should be submitted in the following formats: MPEG, WMV
3. The maximum size of the file should be no more than 2 MB
4. Video/movie images and figures/photographs should be sent without description of doctor's or patient's names, institutions and places of origin.

The originality of tables and figures should be confirmed in the accompanying letter. In case of reproduction of tables and figures from other published sources, the appropriate citation should be done and the original source either in hardcopy or electronic (*.pdf) format along with the obtained permission for publication from Copyright owner (publisher, journal or author(s)) should be submitted to the Editor-in-Chief office.

The rules for title page, references, figures and tables are applicable for all types of manuscripts.

Special Parts

2. Reviews: are prepared by authors or by invited authors. This manuscript should contain the evaluation, discussion, analysis and synthesis of the newest and updated knowledge on topic, intended to be used in clinic, and should define the perspectives for further research. The author should be an expert and have cited published works in the area of interest.

2.1 Unstructured abstract limited to 250 words is required. No more than 6 keywords concordant with NLM MeSH vocabulary terms (available at <http://www.nlm.nih.gov/mesh/MBrowser.html>) must follow the unstructured abstract. Word count is limited by 500 and references number is limited by 50.

3. Editorials: This type of article is a brief evaluation of published manuscripts by authority in the field of investigation other than referees of the journal. At the end of editorial usually a summary on clinical significance of the study is required.

4. Case reports: Interesting from diagnostic and educational point of view case reports concerning seldom, rare seen even by authorities, those one that usually diagnosed and managed with difficulties, and those cases which description is usually missing in clinical practice applications are published. Limited number of case reports is published. Articles accompanied by video/movie images have high priority for publishing. Case reports consist of introduction, case report, discussion and conclusion parts. Reference and word count numbers are limited (no more than 10 and 700 words), and no abstract is required.

5. Scientific letter: The articles in form of preliminary report aimed to announce the new scientific thoughts and data are accepted for publication as scientific letters. The content of the scientific letter should not contain subheadings and is limited by 900 words. The number of references is limited by 10, and number of figures and tables should not exceed 2.

6. Letter to the Editor: Letter to the Editor is one of the main reasons for publication of this journal. It discusses the importance of the published manuscripts, their missing and deficient sites and usually is limited by 5 references and do not exceed 500 words.

7. Education: Knowledge utilized in clinical applications, included in education curriculum of academic level and confirmed by recent research results should be represented.

7.1 Unstructured abstract limited to 250 words is required. No more than 6 keywords concordant with NLM MeSH vocabulary terms (available at <http://www.nlm.nih.gov/mesh/MBrowser.html>) must follow the unstructured abstract. Word count is limited by 500 and references number is limited by 50.

8. Original image: The impressive and rare images reflecting important findings based on clinical science, shedding light on fundamental mechanisms of cardiovascular diseases, emphasizing anomalies, enlightening new treatment methods are accepted for publication. Articles with accompanying video/movie images have high priority for publishing. The article including the title, text and figure legends (without references) should not exceed 250 words. Original images are prepared according with the above-mentioned rules and are published in electronic only version.

9. Historical notes: The articles describing important historical events in cardiology (particularly for Turkey) and relevant disciplines, revealing new information on history of disease's diagnosis and treatment. The new historical findings should be the result of a proper research work on the topic. The content of the historical notes should not contain subheadings and is limited by 900 words. The number of references is limited by 10.

10. Publication Ethics: The material published in this section of the journal includes articles providing the contemporary information on publication ethics and cases of ethics misconduct. The articles are limited by 900 words and the number of references is limited by 10. You can find COPE charts on publication ethics at http://www.publicationethics.org/files/u2/All_flowcharts.pdf.

11. Diagnostic Puzzle: Images which will be of interest for the readers, images of rare cases, obtained from ECG, imaging methods or operation photographs, microscopic-macroscopic anatomic and pathologic findings can be published. Unlike the original images, initial diagnoses of the cases are hidden; and four questions in multiple choice format are prepared. Definite diagnosis-result, explanation and correct answer with instructive images are declared on the ensuing pages of the journal. The Editor-in-Chief can change the format of the question by permission of the authors of original image or case report sent to journal. The authors can send puzzle article in a format not exceeding a total of 500 words, with a maximum of 8 words in the title and up to three references, five images/videos.

İÇİNDEKİLER / CONTENTS

EDİTÖRDEN / EDITORIAL

- Ülkemiz ve bir derginin bilimsel düzeyi 305
Scientific level of a journal and our country
Bilgin Timuralp, Eskişehir-Türkiye

ÖZGÜN ARAŞTIRMALAR / ORIGINAL INVESTIGATIONS

- Increased apolipoprotein A-I levels mediate the development of prehypertension among Turks 306
Artmış apolipoprotein A-I düzeyleri prehipertansiyon gelişmesine Türk yetişkinlerinde aracılık etmektedir
Altan Onat, Günay Can, Ender Örnek, Gökhan Çiçek, Sani N. Murat, Hüsniye Yüksel, İstanbul, Ankara-Turkey
- A new index (CHOLINDEX) in detecting coronary artery disease risk 315
Koroner arter hastalığı riskini belirlemede yeni bir index (CHOLINDEX)
Onur Akpınar, Abdi Bozkurt, Esmeray Acartürk, Gülşah Şeydaoğlu, Adana-Turkey
- Epicardial adipose tissue is independently associated with increased left ventricular mass in untreated hypertensive patients: an observational study 320
Epikardiyal adipoz doku tedavi edilmemiş hipertansif hastalarda artmış sol ventrikül kitlesi ile bağımsız ilişkilidir: Gözlemsel bir çalışma
Turan Erdoğan, Mustafa Çetin, Sinan Altan Kocaman, Murtaza Emre Durakoğlugil, Elif Ergül, Yavuz Uğurlu, Aytun Çanga, Rize-Turkey
- Subclinical left ventricular systolic dysfunction in patients with mild-to-moderate rheumatic mitral stenosis and normal left ventricular ejection fraction: an observational study 328
Hafif orta derecede romatizmal mitral kapak darlığı ve normal sol ventrikül ejeksiyon fraksiyonu olan hastalarda subklinik sol ventrikül sistolik disfonksiyonu: Bir gözlemsel çalışma
Özlem Yıldırım Türk, Fatma Funda Helvacıoğlu, Yelda Tayyareci, Selen Yurdakul, Saide Aytekin, İstanbul-Turkey
- Editorial Comment/Editöryel Yorum: Mitral stenosis-beyond valvular disease 337
Mitral stenosis-kapak hastalığı ötesinde
Marina Leitman, Zvi Vered, Tel Aviv-Israel
- Atrial Fibrillation in Turkey: Epidemiologic Registry (AFTER) study design 339
Türkiye'de Atrial Fibrilasyon: Epidemiyolojik Kayıt (AFTER) çalışması dizaynı
Faruk Ertaş, Hasan Kaya, Murat Yüksel, Mehmet Serdar Soyduñç, Sait Alan, Mehmet Siddık Ülgen, Diyarbakır-Turkey
- Role of electrocardiographic changes in discriminating acute or chronic right ventricular pressure overload 344
Elektrokardiyografik değişikliklerin sağ ventrikül basınç yüklenmesini akut veya kronik olarak ayırt etmedeki rolü
Mehmet Mustafa Can, Olcay Özveren, Murat Biteker, Cihan Şengül, Ömer Uz, Zafer Işılak, Ata Kırılmaz, İstanbul-Turkey
- The role of tenascin-C and oxidative stress in rheumatic and congenital heart valve diseases: an observational study 350
Tenascin-C ve oksidatif stresin romatizmal ve konjenital kalp kapak hastalığındaki rolü: Gözlemsel bir çalışma
Zehra Karataş, Tamer Baysal, Fatih Sap, Hakan Altın, Hümeýra Çiçekler, Konya-Turkey
- Relationship of paraoxonase-1, malondialdehyde and mean platelet volume with markers of atherosclerosis in familial Mediterranean fever: an observational study 357
Ailevi Akdeniz ateşinde paraoksonaz-1, malondialdehit ve ortalama trombosit hacmi ile ateroskleroz belirteçlerinin ilişkisi: Gözlemsel bir çalışma
Özlem Karakurt Arıtürk, Kemal Üreten, Münevver Sarı, Nuray Yazıhan, Ezgi Ermiş, İmge Ergüder, Balıkesir, Ankara, Şanlıurfa-Turkey

İÇİNDEKİLER / CONTENTS

- ▶ Thyroid functions after contrast agent administration for coronary angiography: a prospective observational study in euthyroid patients **363**
Koroner anjiyografi amacıyla kontrast madde verildikten sonra tiroid fonksiyonları: Ötiroid hastalarda prospektif bir gözlemsel çalışma
Sevil Özkan, Aslıhan Semiz Oysu, Kadir Kayataş, Refik Demirtunç, Mehmet Eren, Hatice Uslu, Yüksel Altuntaş, İstanbul-Turkey

DERLEMELER / REVIEWS

- ▶ Aspirin resistance: Where are we now? **370**
Aspirin direnci: Şimdi biz neredeyiz?
Okay Abacı, Kadriye Orta Kılıçkesmez, İstanbul-Turkey
- ▶ Kardiyak bilgisayarlı tomografi ve radyasyon **374**
Cardiac computed tomography and radiation
Burak Sezenöz, Asife Şahinarslan, Ankara-Türkiye

EĞİTİM / EDUCATION

- ▶ Anticoagulation for non-valvular atrial fibrillation: new anticoagulant agents **379**
Non-valvüler atriyal fibrilasyonda antikoagülasyon: Yeni antikoagülan ilaçlar
Alper Kepez, Okan Erdoğan, İstanbul-Turkey



BİLİMSEL MEKTUP / SCIENTIFIC LETTER

- ▶ Characterization of the day-night fluctuations of serum melatonin in young boys and girls with different body mass indexes within normal range according to World Health Organization classification **385**
Dünya Sağlık Örgütüne göre normal aralıkta, değişik vücut kitle indekslerine sahip genç erkek ve kızlardaki gündüz-gece serum melatonin dalgalanmalarının karakteristikleri
Mustafa Yıldız, Banu Şahin Yıldız, Alparslan Şahin, İstanbul-Turkey

YAYIN ETİĞİ / PUBLICATION ETHICS

- ▶ Yayın hakkı devir formunun anlamı ve önemi **388**
The meaning and significance of copyright transfer form
Fatma Suna Kırış, Denizli-Türkiye






OLGU SUNUMLARI / CASE REPORTS

- ▶ Coronary venous angioplasty to a ring-like stricture preventing left ventricular lead insertion **390**
Sol ventrikül lead implantasyonunu önleyen striktüre uygulanan koroner venöz anjiyoplasti 
Ali Deniz, Oğuz Akkuş, Mehmet Kanadaşı, Mesut Demir, Adana-Turkey
- ▶ Electroanatomic mapping-guided radiofrequency ablation of multifocal atrial tachycardia in a child **391**
Multifokal atriyal taşikardi'li bir çocuğun elektroanatomik haritalama sistemi eşliğinde radyofrekans kateter ablasyonu
Tevfik Demir, Yakup Ergül, Celal Akdeniz, Volkan Tuzcu, Eskişehir, İstanbul-Turkey
- ▶ Percutaneous right internal jugular venous cannulation in minimally invasive cardiac surgery **393**
Minimal invaziv kalp cerrahisinde perkütan sağ internal juguler venöz kanülasyon
Emrah Şişli, Ali Aycan Kavala, Gökçen Özserim, Öztekin Oto, Hatay, İstanbul, İzmir-Turkey
- ▶ Suspected endocarditis after CoreValve® implantation: a word of caution **395**
CoreValve® implantasyonu sonrası ortaya çıkan şüpheli endokarditis: Değnilmesi gereken bir uyarı 
İlkay Bozdağ-Turan, Stephan Kische, Giuseppe D'Ancona, Christopher A. Nienaber, Hüseyin İnce, Rostock-Germany

İÇİNDEKİLER / CONTENTS

- ▶ A favorable outcome of a post-myocardial infarction ventricular septal rupture  396
Miyokart enfarktüsü sonrası ventriküler septal rüptürün olumlu sonucu
Paloma Manea, Rodica Ghiuru, Flavia Cociorva, Mircea Balasanian, Grigore Tinica, Iasi-Romania
- TANISAL BİLMECE / DIAGNOSTIC PUZZLE**
- ▶ An interesting diastolic jet in left ventricle  399
Sol ventrikülde ilginç bir diyastolik jet
Onur Taşar, Sedat Kalkan, Taylan Akgün, Cevat Kıрма, İstanbul-Turkey
- EDİTÖRE MEKTUPLAR / LETTERS TO THE EDITOR**
- ▶ Color M-mode propagation velocity as a valuable but neglected parameter 400
Değerli fakat gözardı edilen bir parametre olarak renkli M-mode akım yayılma hızı
Sait Demirkol, Şevket Balta, Mustafa Çakar, Ankara-Turkey
- ▶ Effect of systemic inflammation in the cardiac surgery performed on elderly 401
Yaşlılarda yapılan açık kalp cerrahisinde sistemik enflamasyonun etkisi
Orhan Gökalp, Serkan Yazman, Barçın Özcecm, Ali Gürbüz, İzmir-Turkey; Lefkoşe-Cyprus
- ▶ Thrombus aspiration may decrease bleeding risk in the early postoperative myocardial infarction treated with percutaneous intervention 402
Perkütan girişim ile tedavi edilen erken dönem postoperatif miyokart enfarktüsünde trombüs aspirasyonu kanama riskini azaltabilir
Ahmet Karabulut, İstanbul-Turkey
- ▶ A new piece of puzzle: inflammation in the prediction of recurrence after successful electrical cardioversion in patients with nonvalvular atrial fibrillation 403
Bulmacanın yeni bir parçası: Nonvalvüler atriyal fibrilasyon hastalarında başarılı elektriksel kardiyoversiyon sonrası nüksü öngörmeye enflamasyonun rolü
Şevket Balta, Murat Ünlü, Sait Demirkol, Turgay Çelik, Ankara-Turkey
- ▶ Importance of multislice computed tomography angiography for the diagnosis and evaluation of silent coronary ischemia and asymptomatic acute myocardial infarction: long-term follow-up of three cases 405
Sessiz koroner iskemisinin ve semptomsuz akut miyokart enfarktüsünün tanısında ve değerlendirilmesinde çok kesitli bilgisayarlı koroner kalp tomografisinin önemi: Uzun dönem takip edilmiş üç olgu
Faruk Erzençin, Ramime Özel, Mustafa Özcan, Hüseyin Oflaz, Kamil Adalet, İstanbul-Turkey
- ▶ Life-long oral anticoagulant therapy and rupture of corpus luteum 407
Yaşam boyu oral antikoagülan tedavisi ve korpus luteum rüptürü
Ali Akdemir, Ahmet Mete Ergenoğlu, Ahmet Özgür Yeniel, Levent Akman, İzmir-Turkey
- ▶ The effects of flight on the electrocardiogram 408
Uçuşun elektrokardiyogram üzerindeki etkileri
Mehmet Gül, Hüseyin Uyarel, Musa Salmanoğlu, Murat Uğur, Hüseyin Aksu, İstanbul, Amasya-Turkey
- ▶ Percutaneous pulmonary valve implantation; first experiences from Turkey 409
Perkütan pulmoner kapak implantasyonu; Türkiye'den ilk deneyimler
Ender Ödemiş, Alper Güzeltaş, Murat Saygı, İhsan Bakır, İstanbul-Turkey
- ▶ Extent of angiographic coronary artery disease in khat users 410
Khat kullanıcılarında koroner arter hastalığının anjiyografik yaygınlığı
Abdul-Kafi Shujaa, Wail Nammias, Sanaa-Yemen; Cario-Egypt

İÇİNDEKİLER / CONTENTS

- ▶ Açık EKG kataloğu 411
Open ECG catalogue
Mete Alpaslan, Konya-Türkiye
- TANISAL BİLMECE - Cevap / DIAGNOSTIC PUZZLE - Answer**
- ▶ An interesting diastolic jet in left ventricle 413
Sol ventrikülde ilginç bir diyastolik jet
Onur Taşar, Sedat Kalkan, Taylan Akgün, Cevat Kıрма, İstanbul-Turkey
- ALMANAC SERİLERİ / ALMANAC SERIES**
- ▶ Almanac 2012 adult cardiac surgery: journals present selected research that has driven recent advances 414
in clinical cardiology
Ben Bridgewater, Manchester-UK
- DÜZELTME / ERRATUM** 422
- E-SAYFA ÖZGÜN GÖRÜNTÜLER / E-PAGE ORIGINAL IMAGES**
- ▶ Giant septal hypertrophic cardiomyopathy E-21
Dev septal hipertrofik kardiyomiyopati 
Zafer Işılak, Murat Yalçın, Alptuğ Tokatlı, Mehmet Uzun, İstanbul-Turkey
- ▶ Unusual case with venous channels connecting the left and the right brachiocephalic veins E-21
Sol ve sağ brakıyosefalik venleri bağlayan venöz kanalları olan olağandışı vaka 
Mutlu Çağan Sümerkan, Serkan Bulur, Mehmet Ağırbaşı, Düzce, İstanbul-Turkey
- ▶ Percutaneous closure of second secundum atrial septal defect under guidance of three-dimensional E-22
transesophageal echocardiography guidance 
Üç boyutlu transözofajiyal ekokardiyografi rehberliğinde ikinci sekundum atriyal septal defektin perk tan kapatılması
Sait Demirkol, Cem Barçın, Şevket Balta, Murat Ünlü, Ankara-Turkey
- ▶ Self-inflicted sewing needle in the heart E-23
Kalpte dikiş iğnesi 
Ahmet Elibol, Sabit Sarıkaya, Taylan Adademir, Kaan Kırallı, İstanbul-Turkey
- ▶ The importance of prominent crista terminalis after cardiac surgery E-23
Kalp cerrahisi sonrasında belirgin krista terminalisin önemi 
Azin Alizadeasl, Anita Sadeghpour, Majid Kyavar, Tabriz-Iran