



The Anatolian Journal of Cardiology

Anatol J Cardiol • Volume 16 • Issue 7 • July 2016

Editor-in-Chief

Bilgin Timuralp

Editor

Zeki Öngen

Advisory Board of This Issue

Dursun Çayan Akkoyun

Tolga Aksu

İbrahim Halil Altıparmak

Mustafa Aparcı

Antonildes Assuncao

Halil Ataş

Nermin Bayar

Uğur Canpolat

Gökhan Cüce

Ali D. Dursun

Demet Menekşe Gerede

Maryam Taghizadeh Ghehi

Uğur Nadir Karakulak

Derya Karpuz

Ahmet Kaya

Fatih Koç

Yavuzer Koza

James Mccully

Amr S. Omar

Hakan Oral

Selen Öztürk

Elif Sade

Kadir Sümbüloğlu

Hüseyin Şahin

Mevlüt Türe

Taner Ulus

Diana Valverde

Yunus Keser Yılmaz

Original Investigations

Nigella sativa L. seed oil on intima-media thickness and Bax and Caspase 3 expression in rat
Gökhan Cüce, et al; Konya-Turkey

Warfarin, bridging therapy and bleeding after dental extractions in prosthetic valves
Ismail Erden, et al; Kocaeli-Turkey

Quality of life, and novel oral anticoagulants or warfarin for non-valvular atrial fibrillation
Kevser Gülcihan Balcı, et al; Ankara-Turkey

Recurrence after cryoballoon ablation therapy in patients with paroxysmal atrial fibrillation
Demet Menekşe Gerede, et al; Ankara-Turkey

Editorial comment: Cryoballoon ablation therapy in paroxysmal atrial fibrillation
Ewa Lewicka; Gdansk-Poland

The bone morphogenetic protein receptor type 2 gene and pulmonary arterial hypertension
Zeynep Mutlu, et al; Izmir-Turkey

Neutrophil-to-lymphocyte ratio may be a marker of peripheral artery disease complexity
Ahmet Çağrı Aykan, et al; Trabzon-Turkey

N-acetyl cysteine on renal functions evaluated by blood neutrophil gelatinase-associated lipocalin
Mustafa Aldemir, et al; Afyonkarahisar-Turkey

Pre-test and post-test probability, coronary angiography and myocardial perfusion scintigraphy
Nazlı Pınar Karahan Şen, et al; Kırklareli-Turkey

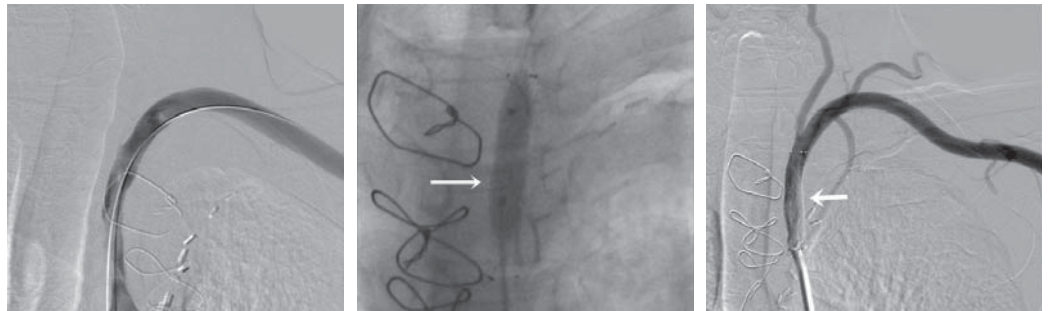
Effects of cinacalcet treatment on QT interval in hemodialysis patients
Gökhan Temiz, et al; Eskişehir-Turkey

Corrected QT interval, carotid artery intima-media thickness and hepatic steatosis in obese children
Ghaniya Daar, et al; Yozgat-Turkey

Review

Cardiac findings in patients with Behçet's disease: Facts and controversies
Heba Farouk, et al; Cairo-Egypt

Page: 545



Editor-in-Chief
Bilgin Timuralp, Eskişehir, Turkey

Editor
Zeki Öngen, İstanbul, Turkey

Associate Editors

Mehmet Bilge, Ankara, Turkey
Alparslan Birdane, Eskişehir, Turkey
Yüksel Çavuşoğlu, Eskişehir, Turkey
Turgay Çelik, Ankara, Turkey
Recep Demirbağ, Şanlıurfa, Turkey
Sadi Güleç, Ankara, Turkey
Mehmet Güngör Kaya, Kayseri, Turkey
Mustafa Kılıçkap, Ankara, Turkey
Sanem Nalbantgil, İzmir, Turkey
Kurtuluş Özdemir, Konya, Turkey
Necla Özer, Ankara, Turkey
Ercan Tutar, Ankara, Turkey
Ahmet Tulga Ulus, Ankara, Turkey
Berrin Umman, İstanbul, Turkey
Hüseyin Uyarel, İstanbul, Turkey

Editor-in-Chief Consultant
Suna Kıraç, Lefkoşe, KKTC

Senior Consultant in Biostatistics
Kazım Özdamar, Eskişehir, Turkey

Consultants in Biostatistics

Canan Baydemir, Kocaeli, Turkey Fezan Mutlu, Eskişehir, Turkey

International Editorial Board

Adnan Abacı, Ankara, Turkey
Kamil Adalet, İstanbul, Turkey
Ramazan Akdemir, Sakarya, Turkey
Levent Akyürek, Göteborg, Sweden
Necmi Ata, Eskişehir, Turkey
Tayfun Aybek, Ankara, Turkey
Saide Aytekin, İstanbul, Turkey
Vedat Aytekin, İstanbul, Turkey
Ljuba Bacharova, Bratislava, Slovak Republic
Luiggi P. Badano, Udine, Italy
Gani Bajraktari, Prishtina, Kosovo
Işık Başar, İstanbul, Turkey
George A. Beller, Charlottesville, VA, USA
Ahmet Birand, İstanbul, Turkey
Dirk L. Brutsaert, Antwerp, Belgium
Gerald D. Buckberg, Los Angeles, CA, USA
Cahid Civelek, St. Louis, MO, USA
Ertan Demirtaş, Ankara, Turkey
Ali Emin Denктаş, Houston, TX, USA
Polychronis Dilaveris, Athens, Greece
Fırat Duru, Zurich, Switzerland
Rasim Enar, İstanbul, Turkey
Oktay Eray, Antalya, Turkey

Ertuğrul Ercan, İzmir, Turkey
Okan Erdoğan, İstanbul, Turkey
Ali Ergin, Kayseri, Turkey
Ali Serdar Fak, İstanbul, Turkey
Roberto Ferrari, Ferrara, Italy
Armen Y. Gasparyan, West Midlands, UK
Ali Gholamrezanezhad, Tahrán, Iran
Hasan Gök, Konya, Turkey
Bülent Görenek, Eskişehir, Turkey
Sema Güneri, İzmir, Turkey
Masayasu Hiraoka, Tokyo, Japan
Erkan İriş, Ankara, Turkey
Diwakar Jain, Philadelphia, USA
Charles Jazra, Bawchrieh, Lebanon
Göksel Kahraman, Kocaeli, Turkey
Mehmet Kaplan, İstanbul, Turkey
Erdem Kaşıkçıoğlu, İstanbul, Turkey
Cihanşir Kaymaz, İstanbul, Turkey
Mustafa Kılıç, Denizli, Turkey
Serdar Kula, Ankara, Turkey
Serdar Küçüköğlü, İstanbul, Turkey
Samuel Levy, Marseille, France
Peter Macfarlane, Renfrewshire, Scotland
Robert W. Mahley, San Francisco, CA, USA

G.B. John Mancini, Vancouver BC, Canada
Matti Mänttari, Helsinki, Finland
Barry J. Maron, Minnesota, USA
Pascal Meier, London, UK
Franz H. Messerli, New York, USA
Haldun Müderrisoğlu, Ankara, Turkey
İstemi Nalbantgil, İzmir, Turkey
Navin C. Nanda, Birmingham, AL, USA
Yılmaz Nişancı, İstanbul, Turkey
Altan Onat, İstanbul, Turkey
Hakan Oral, Ann Arbor, MI, USA
Mehmet Bülent Özün, Ankara, Turkey
Mehmet Özkan, İstanbul, Turkey
Süheyla Özkutlu, Ankara, Turkey
Azmi Özler, İstanbul, Turkey
Sotirios N. Prapas, Athens, Greece
Shahbudin Rahimtoola, Los Angeles, CA, USA
Vedat Sansoy, İstanbul, Turkey
Muhammed Saric, New York, USA
Murat Sezer, İstanbul, Turkey
Mark V. Sherrid, New York, USA
Horst Sievert, Frankfurt, Germany
İlke Sipahi, İstanbul, Turkey
Hulki Meltem Sönmez, Aydın, Turkey

Richard Sutton, Monaco, Monaco
Ahmet Şaşmaz, İstanbul, Turkey
Zeynep Tartan, İstanbul, Turkey
Oğuz Taşdemir, Ankara, Turkey
Ahmet Temizhan, Ankara, Turkey
Adam Timmis, London, England
S. Lale Tokgözoğlu, Ankara, Turkey
Oktay Tutarel, Hannover, Germany
Murat Tuzcu, Cleveland, OH, USA
Taner Ulus, Eskişehir, Turkey
Dilek Ural, Kocaeli, Turkey
Ahmet Ünalır, Eskişehir, Turkey
Marc A. Vos, Utrecht, Netherlands
Galen Wagner, Durham, NC, USA
Hein Wellens, Maastricht, Netherlands
Hüseyin Uğur Yazıcı, Eskişehir, Turkey
Nuran Yazıcıoğlu, İstanbul, Turkey
Murat Yeşil, İzmir, Turkey
Remzi Yılmaz, Antalya, Turkey
Kiyoshi Yoshida, Okayama, Japan
Mehmet Yokuşoğlu, Ankara, Turkey
Jose L. Zamorano, Madrid, Spain
Wojciech Zareba, New York, USA
Mehdi Zoghi, İzmir, Turkey



The Owner and Publishing Manager on behalf of the Turkish Society of Cardiology

Türk Kardiyoloji Derneği adına İmtiyaz Sahibi ve Sorumlu Yazı İşleri Müdürü
Mahmut ŞAHİN

Address : Nish İstanbul A Blok Kat: 8, No: 47-48
Çobançeşme Sanayi Cad. No: 11
Yenişosna, Bahçelievler 34196
İstanbul, Türkiye
Phone : +90 212 221 1730-38
Fax : +90 212 221 1754
E-mail : tkd@tkd.org.tr
Web : www.tkd.org.tr

Editor-in-Chief Office

Phone : +90 222 229 15 65
Fax : +90 222 229 15 85
E-mail : info@anatoljcardiol.com
btimur@ogu.edu.tr

Assistants to the Editor-in-Chief

Betül TUNTAŞ
Asiye SALMAN



The Anatolian Journal of Cardiology is partly supported by University of Eskişehir Osmangazi (ESOGU).

ESKİŞEHİR OSMANGAZI ÜNİVERSİTESİ
MEŞELİK KAMPÜSÜ 26480 ESKİŞEHİR
Phone: +90 222 239 71 48
Fax: +90 222 239 54 00



Publisher: Kare Yayıncılık (Kare Publishing)
Altayçeşme Mah., Samanyolu Sok., Mecit Varlı
Apt., No: 19/6, 34843 Maltepe, İstanbul, TURKEY

Phone: +90 216 550 61 11
Fax: +90 216 550 61 12
http://www.kareyayincilik.com
E-mail: kareyayincilik@gmail.com

Ali CANGÜL, Neslihan ÇAKIR

Yayın Türü: Uluslararası Süreli, Basım Tarihi: Temmuz 2016
Basım: Ege Reklam Basım Sanatları San. Tic. Ltd. Şti.,
Esatpaşa Mah. Ziyapaşa Cad. No: 4 34704 - Atşehir, İstanbul
Phone: 0216 470 44 70 Fax: 0216 472 84 05 www.egebasm.com.tr
Matbaa Sertifika No: 12468

AIMS AND SCOPE

The *Anatolian Journal of Cardiology* is an international monthly periodical on cardiology published on independent, unbiased, double-blinded and peer-review principles. The journal's publication language is English however titles of articles, abstracts and Keywords are also published in Turkish on the journal's web site.

The *Anatolian Journal of Cardiology* aims to publish qualified and original clinical, experimental and basic research on cardiology at the international level. The journal's scope also covers editorial comments, reviews of innovations in medical education and practice, case reports, original images, scientific letters, educational articles, letters to the editor, articles on publication ethics, diagnostic puzzles, and issues in social cardiology.

The target readership includes academic members, specialists, residents, and general practitioners working in the fields of adult cardiology, pediatric cardiology, cardiovascular surgery and internal medicine.

The editorial and publication processes of the journal are conducted in accordance with the guidelines of the International Committee of Medical Journal Editors (ICMJE), the World Association of Medical Editors (WAME), the Council of Science Editors (CSE), the European Association of Science Editors (EASE), the Committee on Publication Ethics (COPE) and the HEART Group.

The *Anatolian Journal of Cardiology* is indexed in Science Citation Index Expanded, PubMed/MEDLINE, EMBASE, Scopus, EMCare, CINAHL, Gale/Cengage Learning, EBSCO, DOAJ, ProQuest, Index Copernicus and TÜBİTAK ULAKBİM TR Index.

The requirements for submission of manuscripts and detailed information about the evaluation process are available in the published journal and also as 'Instructions for Authors' on the web site (<http://www.anatoljcardiol.com>).

Statements and opinions expressed in the *Anatolian Journal of Cardiology* reflect the views of the author(s). All liability for the advertisements rests with the appropriate organization(s). The Turkish Society of Cardiology, the editor-in-chief and KARE PUBLISHING do not accept any responsibility for these articles and advertisements.

Subscriptions

The *Anatolian Journal of Cardiology* is printed on acid-free paper. Applications for subscriptions should be made to the Editorial Office. The abstracts and full texts of published articles can be accessed free of charge at <http://www.anatoljcardiol.com>.

Financial support and advertising

The revenue of the *Anatolian Journal of Cardiology* is derived from subscription charges and advertisements. Institutions wishing to place an advertisement in the printed version of the journal or on the web page should contact KARE PUBLISHING.

Owner : Turkish Society of Cardiology

Address : Çobançeşme Sanayi Cad., No: 11, Nish İstanbul, A Blok, No: 47-48,
34196, Yenibosna, Bahçelievler, İstanbul, TURKEY
Phone : +90 212 221 17 30 / +90 0212 221 17 38
Fax : +90 212 221 17 54
E-mail : tkd@tkd.org.tr

Editor-in-Chief: Prof. Bilgin Timuralp

Address : ESOGÜ Tıp Fakültesi, Merkezi Derslikler, Kat: 3, No: 1, 26480, Meşelik, Eskişehir, TURKEY
Phone : +90 222 229 15 65 / +90 538 480 43 30
Fax : +90 222 229 15 85
E-mail : info@anatoljcardiol.com

Publisher : KARE PUBLISHING

Address : Altayçeşme Mah., Samanyolu Sok., Mecit Varlı Apt., No: 19/6, 34843 Maltepe, İstanbul, TURKEY
Phone : +90 216 550 61 11
Fax : +90 216 550 61 12
E-mail : kareyayincilik@gmail.com

INSTRUCTIONS FOR AUTHORS

The *Anatolian Journal of Cardiology* is published in accordance with the principles of independent, unbiased, and double-blinded peer review. It publishes original research related to clinical, experimental and basic sciences on cardiology, editorial comments, reviews covering current issues, educational articles, scientific letters, case reports, letters to the editor, original images, articles on history of medicine and publication ethics, diagnostic puzzles, and interviews deemed appropriate for the purposes and scope of the journal.

The journal evaluates only the manuscripts submitted through its online submission system on the web site <http://www.anatoljcardiol.com>. Manuscripts sent by other means will not be accepted.

The primary conditions for the acceptance of manuscripts for publication are originality, scientific value and citation potential.

STATEMENTS AND GUIDELINES

Statements

- All statements and opinions expressed in the manuscripts published in the Anatolian Journal of Cardiology reflect the views of the author(s). All liability for the advertisements rests with the appropriate organization(s). The Turkish Society of Cardiology, the Editor-in-Chief and KARE do not accept any responsibility for articles and advertisements.
- The manuscripts submitted to the journal, except abstracts, presentations, reviews and parts of theses, should not have been accepted and published previously elsewhere in electronic or printed format. Manuscripts evaluated and rejected by other journals must mention any previous submissions and supply reviewer's reports. This will help to accelerate the evaluation process. If the submitted manuscript has been previously presented at a meeting, the name, date, city and country must be specified.
- The authors transfer all copyrights of the manuscript in the framework of national and international regulations to the Turkish Society of Cardiology as of evaluation process. A Copyright Transfer Form signed by corresponding author in order must be submitted to the journal with manuscript. After acceptance of manuscript, all of authors must fill and sign Copyright Transfer form. A separate form for each manuscript should be submitted. Manuscripts submitted without a Copyright Transfer Form will not be accepted. In the case of rejection, all copyrights transfer to the authors again. Authors must confirm that they will not submit the work to another journal, publish it in the original or another language and or allow a third party to use the manuscript without the written permission of the Turkish Society of Cardiology.
- All contents are the authors' responsibility. All financial liability and legal responsibility associated with the copyright of submitted tables, figures and other visual materials protected by national and international laws rest with the authors. The authors take responsibility for any legal proceedings issued against the journal.
- Rejected manuscripts will not be returned except for artwork.
- To clarify scientific contributions and responsibilities and any conflict of interest issues relevant to the manuscript, all parts of the 'Authors' Contribution' form must be completed by the corresponding author and the 'ICMJE Uniform Disclosure Form for Potential Conflicts of Interest' must be completed online by all authors. Both forms should be included in the manuscript at the time of original submission.

Guidelines

- The format of the manuscripts must be in accordance with the ICMJE Recommendations for the Conduct, Reporting, Editing and Publication of Scholarly Work in Medical Journals (updated in December 2014: <http://www.icmje.org/icmje-recommendations.pdf>).
- The presentation of the manuscripts must be in accordance with international guidelines. CONSORT should be used for randomized trials, STROBE for observational studies, STARD for diagnostic studies, PRISMA for systematic reviews and meta-analyses, ARRIVE for animal studies, and TREND for non-randomized behavior and public health studies.

Ethics

- All manuscripts will be vetted by the Editor-in-Chief's Office for possible plagiarism and duplication. Sanctions will be imposed in accordance with the guidelines of the Committee on Publication Ethics (COPE) and with the principles of the HEART Group when non-ethical issues arise. The authors must obtain the permission of the copyright holder for non-original tables, figures, graphs, images and other visuals.
- The authors should acknowledge and provide detailed information on any contributions in kind and financial support given by any foundations, institutions and firms.
- An ethics committee report prepared in conformity with the *WMA Declaration of Helsinki - Ethical Principles for Medical Research Involving Human Subjects and the Guide for the Care and Use of Laboratory Animals* is required to be submitted with experimental and clinical studies, drug trial studies and some case reports. Authors may be asked by the Editor-in-Chief's Office for an ethics committee report or similar in other circumstances also. Manuscripts reporting the results of experimental studies must explain in detail all procedures which volunteer subjects and patients have undergone and a statement indicating that consent for the study has been obtained from all subjects should be included in the text. Animal studies should clearly specify how pain or discomfort has been relieved.

PREPARATION AND SUBMISSION OF MANUSCRIPTS

Manuscript files should be prepared with Microsoft Office Word. The online submission system will direct authors during all stages of submission and provide necessary support for accelerating the submission process. A list of the files that should be supplied through the online submission system is provided below.

- Title Page
- Main Text
- Tables, Graphs and Figures
- Copyright Transfer Form
- Author Contribution Form
- ICMJE Uniform Disclosure Form for Potential Conflicts of Interest

1. Title Page

Information about the authors and their institutions should not be included in the main text, tables, figures and video documents. Since submitted manuscripts are evaluated by the reviewers through the online system, personal identification is excluded in the interests of unbiased interpretation. Thus, only information about the manuscript as specified below should be included on the title page. For each type of manuscript, it is mandatory to upload a title page as a separate Microsoft Word document through the online submission system. The title page should include the names of the authors with their latest academic degrees, and the name of the department and institution, city and country where the study was conducted. If the study was conducted in several institutions, the affiliation of each author must be specified with symbols. The correspondence address should contain the full name of the corresponding author, postal and e-mail addresses, phone and fax numbers. If the content of the manuscript has been presented before, the name, date and place of the meeting must be noted. Disclosure of conflict of interest, institutional and financial support, author contributions and acknowledgments should be included on the title page.

2. Main Text

The manuscripts submitted to our journal are classified and evaluated according to the manuscript types stated below. During preliminary evaluation, the editors assess whether a manuscript's format and sub-headings are prepared in accordance with the journal's guidelines. Therefore, it is important that authors check the accuracy of the main text in terms of the following.

A. Manuscript types

- Original investigation
- Editorial comment
- Review
- Education
- Scientific letter
- Case report
- Original image
- Letter to the editor
- Publication ethics
- Scientific puzzle
- Miscellaneous articles

B. References

C. Special Terms and Conditions

A. Manuscript types

• Original Research

- Title
- Structured Abstract: It should be structured with Objective, Methods, Results and Conclusion subheadings and should be limited to 250 words.
- Keywords: This section should contain a minimum of three and a maximum of six items in accordance with Medical Subject Headings (MeSH) terms prepared by the National Library of Medicine (NLM) and should be placed just below the abstract.
- Main Text: It should consist of Introduction, Methods, Results, Discussion, Limitations of the Study and Conclusion sections and should not exceed 5000 words excluding the references.
- References: The reference list should be provided following the Main Text. Limiting the number of references to 50 is usually sufficient.
- Tables, Figures and Images: They should be placed below the reference list and numbered according to their consecutive order in the main text.
- Title, Structured Abstract and Keywords should also be provided in Turkish for manuscripts submitted by Turkish authors or from Turkey. However, translations of these sections for manuscripts submitted by foreign authors outside Turkey will be the responsibility of the publisher.

Statistical Analysis: Statistical analysis should be conducted in accordance with the guidelines on reporting statistical data in medical journals [Altman DG, Gore SM, Gardner MJ, Pocock SJ. Statistical guidelines for contributors to medical journals. *Br Med J* 1983; 7: 1489-93 and Lang T, Altman D. Basic statistical reporting for articles published in clinical medical journals: the **SAMPL Guidelines**. In: Smart P, Maisonneuve H, Polderman A (editors). *Science Editors' Handbook*, European Association of Science Editors, 2013.]. The software used for statistical analysis must be described. Data must be expressed as mean \pm standard deviation when parametric tests are used to compare continuous variables. For nonparametric tests, data must be expressed as median (minimum-maximum) or percentiles (25th and 75th percentiles). In advanced and complex statistical analyses, relative risk (RR), odds ratio (OR) and hazard ratio (HR) must be supported by confidence intervals and p values. The outcomes of statistical analyses and interpretation of the results must be in evidence-based scientific language (Editors of Heart Group journals. Statement on matching language to the type of evidence used in describing outcomes data. *Anatolian Journal of Cardiology* 2012;12:709).

• Editorial Comment

Authors are selected and invited by the Editor-in-Chief. This type of manuscript aims at providing a brief commentary on an article published in the journal by a researcher who is an authority in the relevant field or by the reviewer of the article.

- Title
- Main Text: It should not include subheadings and should be limited to 500 words.
- References: The reference list should follow the main text and the number of references should be limited by 15.
- Abstract, Keywords, Tables, Figures, Images and other visuals are not included in editorial comments.
- The title should also be provided in Turkish for works submitted by Turkish authors or from Turkey. The title of the manuscripts submitted by foreign authors outside Turkey will be translated into Turkish by the Editor-in-Chief's Office.

• Review

Reviews prepared by authors with extensive knowledge on a particular field, which has been reflected in international literature by a high number of publications and citations, are evaluated. The authors may be invited by the Editor-in-Chief. A review should be prepared in the format describing, discussing and evaluating the current level of knowledge or topic that is to be used in the clinical practice and it should guide further studies.

- Title
- Abstract: It should not include subheadings and should be limited to 250 words.
- Keywords: This section should contain a minimum of three and a maximum of six items in accordance with Medical Subject Headings (MeSH) terms prepared by the National Library of Medicine (NLM) and should be provided just below the abstract.
- Main Text: It should include Introduction, other subheadings and Conclusion sections and should be limited to 5000 words excluding the references.
- References: The reference list should be placed just below the main text and the number of references should not exceed 50.
- Tables, Figures and Images: They should be provided after the reference list according to their order of appearance in the text.
- For reviews submitted by Turkish authors or from Turkey, Title, Abstract and Keywords should also be provided in Turkish. For reviews submitted by foreign authors outside Turkey, translations of these sections will be the responsibility of the publisher.

NOTE: The originality of the visuals included in the reviews should be assured by submission of an accompanying letter by the authors. Appropriate citation should be done for the visuals adapted from previously published sources, in accordance with the original versions of the printed or electronic copies. The written permission obtained from the copyright holder (publisher, journal or authors) should be sent to the Editor-in-Chief's Office.

• Education

Knowledge confirmed by the results of recent research studies, involved in education at academic level and used in clinical practices should be presented in detail in this type of manuscript.

- Title
- Abstract: It should not include subheadings and it should be limited to 250 words.
- Keywords: This section should contain a minimum of three and a maximum of six items in accordance with Medical Subject Headings (MeSH) terms prepared by the National Library of Medicine (NLM) and should be provided just below the abstract.
- Main Text: It should include Introduction, other subheadings and Conclusion sections and should not exceed 5000 words excluding the references.
- References: The reference list should be provided just below the main text and the number of references should be limited to 50.
- Tables, Figures and Images: They should be provided after the reference list according to their order of appearance in the main text.
- For educational articles submitted by Turkish authors or from Turkey, Title, Abstract and Keywords should also be provided in Turkish. For articles submitted by foreign authors outside Turkey, the translation of these sections will be carried out by the Editor-in-Chief's Office.

• Scientific Letter

Manuscripts which announce a new scientific invention, are clinically significant, and are in the form of a preliminary report are accepted for publication as scientific letters.

- Title
- Main Text: It should include Introduction, other subheadings and Conclusion sections and should not exceed 900 words excluding the references.
- References: The reference list should be provided just below the main text and the number of references should be limited to 10.
- Tables, Figures and Images: They should be provided below the reference list according to their order of appearance in the text and should be limited to two.
- Abstract and Keywords should not be included.
- For scientific letters submitted by Turkish authors or from Turkey, the Title should also be provided in Turkish. For letters submitted by foreign authors outside Turkey, the translation of these sections will be carried out by Editor-in-Chief's Office.

• Case Report

Since a limited number of case reports is published, only reports which are related to rare cases and conditions that constitute challenges in diagnosis and treatment, offer new methods or suggest knowledge not included in books, and are interesting and educational are accepted for publication.

- Title
- Main Text: It should include Introduction, Case Report, Discussion and Conclusion sections and should not exceed 700 words excluding the references.
- References: The reference list should follow the main text and the number of references should be limited to 10.

- Tables, Figures and Images: They should be provided after the reference list according to their order of appearance in the text and should be limited to two.
- Abstract and Keywords are not included.
- For case reports submitted by Turkish authors or from Turkey, the Title should also be provided in Turkish. For case reports submitted by foreign authors outside Turkey, the translation of these sections will be carried out by the Editor-in-Chief's Office.

NOTE 1: Case reports that include video images have a better chance of publication.

NOTE 2: For case reports to be taken under review, the first author must subscribe to the Anatolian Journal of Cardiology for one year. This requirement is only for the initiation of the preliminary assessment process. It does not guarantee acceptance for publication or evaluation. The manuscript of the subscriber will be evaluated strictly in accordance with the journal's criteria. Being a subscriber does not guarantee priority in terms of evaluation or guarantee publication. The VAT-inclusive subscription fee is 240 TL and the Anatolian Journal of Cardiology must be contacted for subscription procedures.

• Original Image

Impressive and rare images that reflect significant findings based on clinical science, shed light on fundamental mechanisms of diseases, emphasize abnormalities or introduce new treatment methods are accepted for publication.

- Title
- Main Text: It should not include subheadings and it should be limited to 250 words.
- Tables, Figures and Images: They should be provided after the main text according to their order of appearance in the text and should be limited to two.
- Abstract, Keywords and References are not included.
- For original images submitted by Turkish authors or from Turkey, the Title should also be written in Turkish. For images submitted by foreign authors outside Turkey, the translation of this section into Turkish will be carried out by the publisher.

NOTE 1: Those manuscripts with video images have a better chance of publication.

NOTE 2: Manuscripts prepared in accordance with original image criteria are published only as an e-page at the journal's website <http://www.anatoljcardiol.com>.

NOTE 3: For original image manuscripts to be taken under review, the first author must subscribe to the Anatolian Journal of Cardiology for one year. This requirement is only for the initiation of the preliminary assessment process. It does not guarantee acceptance for publication or evaluation. The manuscript of the subscriber will be evaluated strictly in accordance with the journal's criteria. Being a subscriber does not guarantee priority in terms of evaluation or guarantee publication. The VAT-inclusive subscription fee is 240 TL and the Turkish Society of Cardiology must be contacted for subscription procedures.

• Letter to the Editor

Letters to the Editor aim to discuss the importance of a manuscript previously published in the journal. This type of manuscripts should also include a comment on the published manuscript. Moreover, articles on topics of interest to readers within the scope of the journal, especially on educational issues, can be published in the format of a Letter to the Editor.

- Title
- Main Text: It should not include subheadings and it should be limited to 500 words.
- References: The reference list should follow the main text and the number of references should be limited to five. The volume, year, issue, page numbers, authors' names and title of the manuscript should be clearly stated, included in the list of references and cited within the text.
- Abstract, Keywords, Tables, Figures and Images, and other visuals are not included.
- For manuscripts submitted by Turkish authors or from Turkey, the Title should also be written in Turkish. For manuscripts submitted by foreign authors outside Turkey, the translation of this section into Turkish will be carried out by the publisher.

• Publication Ethics

These articles include current information on research and publication ethics and also cases of ethical violation.

- Title
- Main Text: It should not exceed 900 words.
- References: The reference list should follow the main text and the number of references should be limited to 10.
- Tables, Figures and Images: They should be placed after the reference list according to their order of appearance in the text and limited to two.
- Abstract and Keywords are not included.
- For articles submitted by Turkish authors or from Turkey, the Title should also be written in Turkish. For articles submitted by foreign authors outside Turkey, the translation of this section into Turkish will be carried out by the publisher.

• Scientific Puzzle

Images obtained directly or on operation, visuals revealed through EKG and/or imaging methods, and macroscopic-microscopic anatomical, pathological findings of attention-grabbing and rare cases can be published. Unlike original images, the diagnosis and outcome of the case and image are hidden at the beginning in diagnostic puzzles. Four multiple-choice questions are prepared. In the following pages of the journal, the correct answer in terms of precise diagnosis and outcome is given with an explanation and didactic images and then discussed. The Editor-in-Chief will convert suitable images into the format of a diagnostic puzzle with the authors' permission.

- Title
- Main Text: It should not exceed 500 words.
- References: The reference list should follow the main text and be limited to a maximum of three.
- Tables, Figures and Images: They should be placed after the reference list according to their order of appearance in the text and should be limited to five.
- Abstract and Keywords should not be included

- For diagnostic puzzles submitted by Turkish authors or from Turkey, the Title should also be provided in Turkish. For diagnostic puzzles submitted by foreign authors outside Turkey, the translation of this section into Turkish will be carried out by the publisher.
- **Miscellaneous**
This type of manuscript covers important events and obituaries.
 - Title
 - Main Text: It should not exceed 1000 words.
 - References: The reference list should follow the main text and the number of references should be limited to 10.
 - Tables, Figures and Images: They should be placed after the reference list according to their order of appearance in the text and should be limited to five.
 - Abstract and Keywords should not be included.
 - For manuscripts submitted by Turkish authors or from Turkey, the Title should also be provided in Turkish. For manuscripts submitted by foreign authors outside Turkey, the translation of this section into Turkish will be carried out by the publisher.

B. References

- References should be numbered in the order in which they are cited within the main text.
 - Only manuscripts published or accepted for publication should be cited.
 - Recent publications related to the topic of the manuscript should be reviewed.
 - References that are inaccessible and not indexed in any database should not be cited.
 - The titles of journals should be abbreviated in accordance with (Patrias K. Citing medicine: the NLM style guide for authors, editors, and publishers [Internet]. 2nd ed. Wendling DL, technical editor. Bethesda (MD): National Library of Medicine (US); 2007 - [updated 2011 Sep 15; cited Year Month Day].
 - For references with six and fewer authors, all authors should be listed. For references with more than six authors, the first six authors should be listed, followed by 'et al'.
- The style and punctuation of the references should be formatted as in the following examples.

Journal: Muller C, Buttner HJ, Peterson J, Roskomun H. A randomized comparison of clopidogrel and aspirin versus ticlopidine and aspirin after placement of coronary artery stents. *Circulation* 2000; 101: 590-3.

Book Chapter: Sherry S. Detection of thrombi. In: Strauss HE, Pitt B, James AE, editors. *Cardiovascular Medicine*. St Louis: Mosby; 1974. p.273-85.

Book with Single Author: Cohn PF. Silent myocardial ischemia and infarction. 3rd ed. New York: Marcel Dekker; 1993.

Editor(s) as author: Norman IJ, Redfern SJ, editors. *Mental health care for elderly people*. New York: Churchill Livingstone; 1996.

Conference Paper: Bengissson S, Sothemin BG. Enforcement of data protection, privacy and security in medical informatics. In: Lun KC, Degoulet P, Piemme TE, Rienhoff O, editors. *MEDINFO 92. Proceedings of the 7th World Congress on Medical Informatics*; 1992 Sept 6-10; Geneva, Switzerland. Amsterdam: North-Holland; 1992.p.1561-5.

Scientific or Technical Report: Smith P, Golladay K. Payment for durable medical equipment billed during skilled nursing facility stays. Final report. Dallas (TX) Dept. of Health and Human Services (US). Office of Evaluation and Inspections: 1994 Oct. Report No: HHSIGOE 169200860.

Thesis: Kaplan SI. Post-hospital home health care: elderly access and utilization (dissertation). St Louis (MO): Washington Univ. 1995.

Manuscripts accepted for publication but not published yet: Leshner AI. Molecular mechanisms of cocaine addiction. *N Engl J Med* In press 1997.

Epub ahead of print articles: Aksu HU, Ertürk M, Gül M, Uslu N. Successful treatment of a patient with pulmonary embolism and biatrial thrombus. *Anatol J Cardiol* 2012 Dec 26. doi:10.5152/akd.2013.062. [Epub ahead of print]

Manuscript published in electronic format: Morse SS. Factors in the emergence of infectious diseases. *Emerg Infect Dis* (serial online) 1995 Jan-Mar (cited 1996 June 5): 1(1): (24 screens). Available from: URL: <http://www.cdc.gov/ncidod/EID/cid.htm>.

C. Special Terms and Conditions

- For double-blinded peer-review process, the names of the corresponding author and other authors, their affiliations and any information on the study centres should not be included in any part of the submitted manuscripts and images, except the Title Page.
This information should be added to the relevant section of the online submission system and included in the Title Page.
- Pharmaceutical products should be written with their generic names and brand and company names, city and country should be specified for medical equipment and devices.

3. Tables, Graphs and Figures

- Tables, Graphs, Figures and other visuals should be numbered in the order of their citation within the text and names of patients, doctors and institutions should not be disclosed.
- Tables should be prepared in a Microsoft Office Word document using the command 'Insert Table' and inserted at the end of the references in the main text.
- Tables should not be submitted in JPEG, TIFF or other visual formats. For microscopic images, the magnification ratio and staining technique used should be specified in addition to figure legends.

- All visuals should have a high resolution (minimum 300 dpi).
- The thickness of the lines in graphs should be sufficient to minimize loss of quality if size reduction is needed during the printing process. The width of the graphs should be 9 cm or 18 cm. Drawings should be performed by professionals. No grey colours should be used.
- Abbreviations should be explained in alphabetical order at the bottom of the tables, graphs and figures
- Roman numbers should be avoided in tables and figures within the text and their titles.
- Decimal numbers used in text, tables and figures should be separated by commas in Turkish sections and by dots in English sections.
- Tables should be easily understandable and should not repeat the data in the main text.
- In addition to the pictures included in case reports and original images, video and movie images are published on the journal's website. These images should be prepared in MPEG format with a maximum size of 2 MB. They should be submitted to the journal with the manuscript documents. The names of patients, doctors, institutions and places should be omitted from all documents.

NOTE: All visuals in the manuscripts are printed in black and white without charge. However, 300 TL per article must be paid if colour is required. The Editor-in-Chief's Office of the Anatolian Journal of Cardiology should be contacted for payment.

EVALUATION AND PUBLICATION

- The main text submitted to the journal must be in English. Manuscripts written in other languages are not accepted. Citation potential is higher for manuscripts in English.
- The Editor-in-Chief's Office checks the conformity of the manuscript with the journal's general guidelines before sending it to associate editors and reviewers. Any manuscripts not prepared in accordance with the journal's guidelines will be returned for revision. The evaluation period is limited to 21 days. If revision is requested, authors should submit their revised manuscripts within 24 days. Manuscripts and revisions should be submitted through the online manuscript submission system at the website <http://www.anatoljcardiol.com>. Manuscripts sent by e-mail will not be accepted.
- Manuscripts are evaluated in accordance with the principles of double-blinded peer review. Of the submitted manuscripts, those considered to be suitable are subjected to preliminary evaluation by the Editor-in-Chief's assistants in terms of style, format, etc. and by the Editor-in-Chief in terms of their content. Manuscripts considered to be scientifically adequate are assigned to four reviewers. These reviewers are independent experts and members of the editorial board who have published internationally on the topic of the manuscript. Research articles, systematic reviews and meta-analyses are also evaluated by the Editor-in-Chief's statistician counsellors in addition to peer review. When needed, the manuscripts are scanned by the Editor-in-Chief's Office using the iThenticate program for determination of plagiarism and non-ethical situations. Also, all manuscripts are reviewed and edited for compliance with the rules of English grammar. All contributing authors of a manuscript accepted for publication are deemed to have accepted the right of editors to make corrections provided that no fundamental change is made to the basic meaning of the original text. Manuscripts not accorded priority for publication by the Editor-in-Chief, Editor, Associate Editors and Referees are rejected.
- The retraction requests of the manuscripts close to the final decision in evaluation process, without any reasonable explanation (not contrary to the Publication Ethics) is considered in the scope of rejection decision. Manuscripts that are not revised and resubmitted within the specified time and fail to notify the journal accordingly will be rejected.
- Once a manuscript is accepted for publication, addition to the author list, removal from the author list and order change cannot be effected.
- Manuscripts accepted for publication are prepared as 'Epub ahead of print articles' and published with an assigned DOI on the journal website <http://www.anatoljcardiol.com>.
- Information on the latest status of manuscripts submitted for evaluation and other information about the journal are available on the website <http://www.anatoljcardiol.com>. Contact details for the Editor-in-Chief's Office and the publisher are given below.

Owner : Turkish Society of Cardiology

Address : Çobançeşme Sanayi Cad., No: 11, Nish İstanbul, A Blok, No: 47-48, 34196, Yenibosna, Bahçelievler, İstanbul, TURKEY
Phone : +90 212 221 17 30 / +90 0212 221 17 38
Fax : +90 212 221 17 54
E-mail : tkd@tkd.org.tr

Editor-in-Chief: Prof. Bilgin Timuralp

Address : ESOGÜ Tıp Fakültesi, Merkezi Derslikler, Kat: 3, No: 1, 26480, Meşelik, Eskişehir, TURKEY
Phone : +90 222 229 15 65 / +90 538 480 43 30
Fax : +90 222 229 15 85
E-mail : info@anatoljcardiol.com

Publisher : KARE PUBLISHING

Address : Altayçeşme Mah., Samanyolu Sok., Mecit Varlı Apt., No: 19/6, 34843 Maltepe, İstanbul, TURKEY
Phone : +90 216 550 61 11
Fax : +90 216 550 61 12
E-mail : kareyayincilik@gmail.com

CONTENTS**EDITORIAL**

- ▶ Someone is following us, aren't they? 459
Zeki Öngen; Istanbul-*Turkey*

ORIGINAL INVESTIGATIONS

- ▶ Effects of *Nigella sativa* L. seed oil on intima–media thickness and Bax and Caspase 3 expression in diabetic rat aorta 460
Gökhan Cüce, Mehmet Enes Sözen, Seda Çetinkaya, Halime Tuba Canbaz, Hatice Seflek, Serpil Kalkan; Konya-*Turkey*
- ▶ Comparison of uninterrupted warfarin and bridging therapy using low-molecular weight heparin with respect to the severity of bleeding after dental extractions in patients with prosthetic valves 467
İsmail Erden, Emine Çakcak Erden, Tolga Aksu, Şükriye Ebru Gölcük, Burak Turan, Ayhan Erkol, Mustafa Akçakoyun, Tülin Sayın; Kocaeli, Istanbul-*Turkey*
- ▶ Comparison of health-related quality of life among patients using novel oral anticoagulants or warfarin for non-valvular atrial fibrillation 474
Kevser Gülcihan Balcı, Mustafa Mücahit Balcı, Uğur Canpolat, Fatih Şen, Mehmet K. Akboğa, Muhammed Süleymanoğlu, Serdar Kuyumcu, Orhan Maden, Hatice Selçuk, Mehmet Timur Selçuk; Ankara-*Turkey*
- ▶ Prediction of recurrence after cryoballoon ablation therapy in patients with paroxysmal atrial fibrillation 482
Demet Menekşe Gerede, Başar Candemir, Veysel Kutay Vurgun, Siamak Mousavi Aghdam, Aynur Acıbuca, Özgür Ulaş Özcan, Hüseyin Göksülük, Celal Kervancıoğlu, Çetin Erol; Ankara-*Turkey*
- Editorial Comment: Prediction of recurrence after cryoballoon ablation therapy in patients with paroxysmal atrial fibrillation 489
Ewa Lewicka; Gdansk-*Poland*
- ▶ Sequencing of mutations in the serine/threonine kinase domain of the bone morphogenetic protein receptor type 2 gene causing pulmonary arterial hypertension 491
Zeynep Mutlu, Meral Kayıkçioğlu, Sanem Nalbantgil, Özcan Vuran, Hatice Kemal, Nesrin Moğulkoç, Biray Ertürk, Hüseyin Onay, Zuhale Eroğlu, Hakan Kültürsay; İzmir-*Turkey*
- ▶ Neutrophil-to-lymphocyte ratio may be a marker of peripheral artery disease complexity 497
Ahmet Çağrı Aykan, Engin Hatem, Ezgi Kalaycıoğlu, Can Yücel Karabay, Regayip Zehir, Tayyar Gökdeniz, Duygun Altıntaş Aykan, Şükrü Çelik; Trabzon, Istanbul-*Turkey*
- ▶ Effects of N-acetyl cysteine on renal functions evaluated by blood neutrophil gelatinase-associated lipocalin levels in geriatric patients undergoing coronary artery bypass grafting 504
Mustafa Aldemir, Halit Buğra Koca, Elif Doğan Bakı, Görkem Çarşamba, Nilgün Öztürk Kavrut, Ali Sait Kavaklı, Fahri Adalı, Mustafa Emmiler, Osman Tansel Darçın; Afyonkarahisar, Antalya-*Turkey*
- ▶ The use of pre-test and post-test probability values as criteria before selecting patients to undergo coronary angiography in patients who have ischemic findings on myocardial perfusion scintigraphy 512
Nazlı Pınar Karahan Şen, Recep Bekiş, Ali Ceylan, Erkan Derebek; Kırklareli, İzmir-*Turkey*
- ▶ Effects of cinacalcet treatment on QT interval in hemodialysis patients 520
Gökhan Temiz, Ahmet Uğur Yalçın, Rüya Mutluay, İlter Bozacı, Cengiz Bal; Eskişehir-*Turkey*
- ▶ Association between the corrected QT interval, carotid artery intima-media thickness, and hepatic steatosis in obese children 524
Ghaniya Daar, Halil İbrahim Serin, Hüseyin Ede, Haşim Hüsrevşahi; Yozgat-*Turkey*

CONTENTS



REVIEW

- ▶ Cardiac findings in patients with Behçet's disease: Facts and controversies 529
Heba Farouk, Hania Salah Zayed, Karim El-Chilali; Cairo-Egypt, Essen-Germany

EDUCATION

- ▶ Non-alcoholic fatty liver disease—From the cardiologist perspective 534
Oana Sirbu, Mariana Floria, Petru Dăscălița, Victorița Șorodoc, Laurențiu Șorodoc; Iași-România

CASE REPORTS

- ▶ Acute myocardial infarction and ischemic stroke coexistence due to marijuana abuse in an adolescent 542
Muhammed Keskin, Mert İlker Hayıroğlu, Ümran Keskin, Mehmet Eren; Istanbul-Turkey 
- ▶ Severe hypocalcemia and hypercalciuria due to contrast medium in the course of acute myocardial infarction 543
Ali Çoner, Gültekin Gençtoy, Serhat Balcıoğlu, Haldun Müderrisoğlu; Ankara, Antalya-Turkey
- ▶ Coronary-subclavian steal syndrome in a hemodialysis patient with ipsilateral subclavian artery occlusion and contralateral vertebral artery stenosis "Case Report" 545
Saim Sağ, Ömer Fatih Nas, Ömer Bedir, İbrahim Baran, Sümeyye Güllülü, Bahattin Hakyemez; Bursa-Turkey 

LETTERS TO THE EDITOR

- ▶ Can neutrophil-to-lymphocyte ratio be a valuable marker in defining peripheral artery disease severity? 547
Can Ramazan Öncel; Antalya-Turkey
- ▶ Mitral annular calcification: left atrial size and left ventricular dysfunction 548
Mariana Floria, Livia Genoveva Baroi, Catalina Arsenescu Georgescu; Iasi-Romania
- ▶ Postoperative atrial fibrillation may be associated with other factors 549
Ali Rıza Akyüz, Levent Korkmaz; Trabzon-Turkey
- ▶ Effects of energy drinks on blood pressure, heart rate, and electrocardiographic parameters: an experimental study on healthy young adults 550
Levent Cerit; Nicosia-Turkish Republic of Northern Cyprus
- ▶ When is the best time to mobilize patients after myocardial infarction? An issue that merits further research 552
Hassan Sharifi, Amir Emami Zeydi; Mashhad, Iranshahr-Iran