



The Anatolian Journal of Cardiology

Anatol J Cardiol • Volume 18 • Issue 5 • November 2017

Editor-in-Chief

Bilgin Timuralp

Editor

Adnan Abacı

Advisory Board of This Issue

Sultan Alghadeer

İbrahim Halil Altıparmak

Arif Arısoy

Özer Badak

Meki Bilici

Nadia Bouzidi

Samer Ellahham

İlkay Erdoğan

Kaizheng Gong

Xiang Gu

İlker Gül

Hasan Güngör

Mei He

Belma Uygur Kalaycı

Mehmet Kayrak

Gülistan Karadeniz

Uğur Nadir Karakulak

Harun Kundi

Merih Kutlu

Rufat Mammadov

Eric T. McWilliams

Murat Meriç

Giacomo Mugnai

Thach Nguyen

Seçkin Pehlivanoğlu

Halil İbrahim Tanboğa

Birgül Varan

Çağrı Yayla

Pınar Yıldız

Xiulan Zhao



Original Investigations

Protection by nitrite against the ischemic effects induced by acute myocardial infarction in mice
Yafei Wang et al.; Morgantown-*People's Republic of China*

Cocoon duct occluder for transcatheter closure of large patent ductus arteriosus: A follow-up
Santosh Kumar Sinha et al.; Uttar Pradesh-*India*

Comparison of warfarin use in terms of efficacy and safety in two different outpatient clinics
Salih Kılıç et al.; İzmir-*Turkey*

Metformin continuation prior to coronary angiography and renal functions
Veysel Oktay et al.; İstanbul-*Turkey*

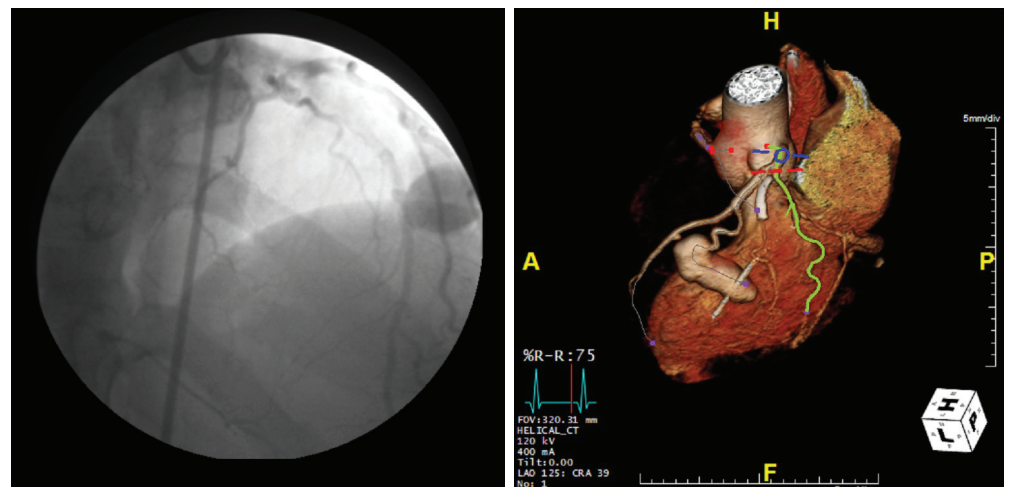
Aortic propagation velocity and classical aortic stiffness parameters in healthy individuals
Hatem Ari et al.; Isparta-*Turkey*

Association of female gender and heart rate with increased arterial stiffness in type 2 diabetes
Min-Kyung Kang et al.; Seoul-*South Korea*

Tp-e interval, Tp-e/QT ratio and Tp-e/QTc ratio in mitral stenosis before and after valvuloplasty
Muhammet Dural et al.; Eskişehir-*Turkey*

The dynamic thiol/disulphide homeostasis as a indicator of oxidative stress in obese children
Bahri Elmas et al.; Sakarya-*Turkey*

Page: E-9



Editor-in-Chief**Bilgin Timuralp, Eskişehir, Turkey****Editor****Adnan Abacı, Ankara, Turkey****Associate Editors**

Yüksel Çavuşoğlu, Eskişehir, Turkey
 Recep Demirbağ, Şanlıurfa, Turkey
 Sadi Güleç, Ankara, Turkey
 Ali Gürbüz, İzmir, Turkey
 Mustafa Kılıçkap, Ankara, Turkey
 Selma Metintaş, Eskişehir, Turkey
 Kurtuluş Özdemir, Konya, Turkey
 Ercan Tutar, Ankara, Turkey
 Berrin Umman, İstanbul, Turkey
 Aylin Yıldırım, Ankara, Turkey
 Mehmet Birhan Yılmaz, Sivas, Turkey

Editor-in-Chief Consultant**Suna Kıraç, Lefkoşe, KKTC****Senior Consultant in Biostatistics****Kazım Özdamar, Eskişehir, Turkey****Consultant in Biostatistics****Fezan Mutlu, Eskişehir, Turkey****Editorial Board**

Kamil Adalet, İstanbul, Turkey
 Ramazan Akdemir, Sakarya, Turkey
 Levent Akyürek, Göteborg, Sweden
 Necmi Ata, Eskişehir, Turkey
 Tayfun Aybek, Ankara, Turkey
 Saide Aytekin, İstanbul, Turkey
 Vedat Aytekin, İstanbul, Turkey
 Ljuba Bacharova, Bratislava, Slovak Republic
 Luiggi P. Badano, Udine, Italy
 Gani Bajraktari, Prishtina, Kosovo
 Işık Başar, İstanbul, Turkey
 Canan Baydemir, Kocaeli, Turkey
 George A. Beller, Charlottesville, VA, USA
 Dirk L. Brutsaert, Antwerp, Belgium
 Gerald D. Buckberg, Los Angeles, CA, USA
 Cahid Civelek, St. Louis, MO, USA
 Ertan Demirtaş, Ankara, Turkey
 Ali Emin Denктаş, Houston, TX, USA
 Polychronis Dilaveris, Athens, Greece
 Firat Duru, Zurich, Switzerland
 Rasim Enar, İstanbul, Turkey
 Oktay Eray, Antalya, Turkey
 Ertuğrul Ercan, İzmir, Turkey

Okan Erdoğan, İstanbul, Turkey
 Ali Ergin, Kayseri, Turkey
 Ali Serdar Fak, İstanbul, Turkey
 Roberto Ferrari, Ferrara, Italy
 Armen Y. Gasparyan, West Midlands, UK
 Ali Gholamrezanezhad, Tahrán, Iran
 Bülent Görenek, Eskişehir, Turkey
 Sema Güneri, İzmir, Turkey
 Masayasu Hiraoka, Tokyo, Japan
 Erkan İriş, Ankara, Turkey
 Diwakar Jain, Philadelphia, USA
 Charles Jazra, Bawchrieh, Lebanon
 Göksel Kahraman, Kocaeli, Turkey
 Mehmet Kaplan, İstanbul, Turkey
 Erdem Kaşıkçıoğlu, İstanbul, Turkey
 Cihangir Kaymaz, İstanbul, Turkey
 Mustafa Kılıç, Denizli, Turkey
 Serdar Kula, Ankara, Turkey
 Serdar Küçüköğlü, İstanbul, Turkey
 Samuel Levy, Marseille, France
 Peter Macfarlane, Renfrewshire, Scotland
 Robert W. Mahley, San Francisco, CA, USA
 G.B. John Mancini, Vancouver BC, Canada

Matti Mänttari, Helsinki, Finland
 Barry J. Maron, Minnesota, USA
 Pascal Meier, London, UK
 Franz H. Messerli, New York, USA
 Haldun Müderrisoğlu, Ankara, Turkey
 İstemi Nalbantgil, İzmir, Turkey
 Sanem Nalbantgil, İzmir, Turkey
 Navin C. Nanda, Birmingham, AL, USA
 Yılmaz Nişancı, İstanbul, Turkey
 Altan Onat, İstanbul, Turkey
 Hakan Oral, Ann Arbor, MI, USA
 Necla Özer, Ankara, Turkey
 Zeki Öngen, İstanbul, Turkey
 Mehmet Bülent Özün, Ankara, Turkey
 Mehmet Özkan, İstanbul, Turkey
 Süheyla Özkutlu, Ankara, Turkey
 Azmi Özler, İstanbul, Turkey
 Sotirios N. Prapas, Athens, Greece
 Shahbuddin Rahimtoola, Los Angeles, CA, USA
 Vedat Sansoy, İstanbul, Turkey
 Muhammed Saric, New York, USA
 Murat Sezer, İstanbul, Turkey
 Mark V. Sherid, New York, USA

Horst Sievert, Frankfurt, Germany
 İlke Sipahi, İstanbul, Turkey
 Hülki Meltem Sönmez, Aydın, Turkey
 Richard Sutton, Monaco, Monaco
 Ahmet Şaşmazel, İstanbul, Turkey
 Zeynep Tartan, İstanbul, Turkey
 Oğuz Taşdemir, Ankara, Turkey
 Ahmet Temizhan, Ankara, Turkey
 Adam Timmis, London, England
 S. Lale Tokgözoğlu, Ankara, Turkey
 Oktay Tutarel, Hannover, Germany
 Murat Tuzcu, Cleveland, OH, USA
 Tamer Ulus, Eskişehir, Turkey
 Dilek Ural, Kocaeli, Turkey
 Ahmet Ünalır, Eskişehir, Turkey
 Marc A. Vos, Utrecht, Netherlands
 Hein Wellens, Maastricht, Netherlands
 Nuran Yazıcıoğlu, İstanbul, Turkey
 Murat Yeşil, İzmir, Turkey
 Kiyoshi Yoshida, Okayama, Japan
 Mehmet Yokuşoğlu, Ankara, Turkey
 Jose L. Zamorano, Madrid, Spain
 Wojciech Zareba, New York, USA
 Mehdi Zoghi, İzmir, Turkey



The Owner and Publishing Manager on behalf of the Turkish Society of Cardiology

Türk Kardiyoloji Derneği adına İmtiyaz Sahibi ve Sorumlu Yazı İşleri Müdürü
 Mahmut ŞAHİN

Address : Nish İstanbul A Blok Kat: 8, No: 47-48
 Çobançeşme Sanayi Cad. No: 11
 Yenibosna, Bahçelievler 34196
 İstanbul, Türkiye
 Phone : +90 212 221 1730-38
 Fax : +90 212 221 1754
 E-mail : tkd@tkd.org.tr
 Web : www.tkd.org.tr

Editor-in-Chief Office

Phone : +90 222 229 15 65
 Fax : +90 222 229 15 85
 E-mail : info@anatoljcardiol.com
 btimur@ogu.edu.tr

Assistants to the Editor-in-Chief

Betül TUNTAŞ
 Asiye SALMAN
 Elif DEMİREL



The Anatolian Journal of Cardiology is partly supported by University of Eskişehir Osmangazi (ESOGU).

ESKİŞEHİR OSMANGAZİ ÜNİVERSİTESİ
 MEŞELİK KAMPÜSÜ 26480 ESKİŞEHİR
 Phone: +90 222 239 71 48
 Fax: +90 222 239 54 00



Publisher: Kare Yayıncılık (Kare Publishing)

Altayçeşme Mah., Atatürk Caddesi, Engin Sokak, No: 3,
 Kat: 4, Daire: 20, 34843 Maltepe, İstanbul, TURKEY

Phone: +90 216 550 61 11

Fax: +90 216 550 61 12

http://www.kareyayincilik.com

E-mail: kareyayincilik@gmail.com

Ali CANGÜL, Elif SÖNMEZ

Yayın Türü: Uluslararası Süreli, Basım Tarihi: Kasım 2017
 Basım: Yıldırım Matbaacılık, Yüzyıl Mah. Massit Matbaacılık Sitesi,
 1. Cad. No: 101, Bağcılar, İstanbul, Tel: +90212 629 80 37

AIMS AND SCOPE

The *Anatolian Journal of Cardiology* is an international monthly periodical on cardiology published on independent, unbiased, double-blinded and peer-review principles. The journal's publication language is English however titles of articles, abstracts and Keywords are also published in Turkish on the journal's web site.

The *Anatolian Journal of Cardiology* aims to publish qualified and original clinical, experimental and basic research on cardiology at the international level. The journal's scope also covers editorial comments, reviews of innovations in medical education and practice, case reports, original images, scientific letters, educational articles, letters to the editor, articles on publication ethics, diagnostic puzzles, and issues in social cardiology.

The target readership includes academic members, specialists, residents, and general practitioners working in the fields of adult cardiology, pediatric cardiology, cardiovascular surgery and internal medicine.

The editorial and publication processes of the journal are conducted in accordance with the guidelines of the International Committee of Medical Journal Editors (ICMJE), the World Association of Medical Editors (WAME), the Council of Science Editors (CSE), the European Association of Science Editors (EASE), the Committee on Publication Ethics (COPE) and the HEART Group.

The *Anatolian Journal of Cardiology* is indexed in Science Citation Index Expanded, PubMed/MEDLINE, EMBASE, Scopus, EMCare, CINAHL, Gale/Cengage Learning, EBSCO, DOAJ, ProQuest, Index Copernicus and TÜBİTAK ULAKBİM TR Index.

The requirements for submission of manuscripts and detailed information about the evaluation process are available in the published journal and also as 'Instructions for Authors' on the web site (<http://www.anatoljcardiol.com>).

Statements and opinions expressed in the *Anatolian Journal of Cardiology* reflect the views of the author(s). All liability for the advertisements rests with the appropriate organization(s). The Turkish Society of Cardiology, the editor-in-chief and KARE PUBLISHING do not accept any responsibility for these articles and advertisements.

Subscriptions

The *Anatolian Journal of Cardiology* is printed on acid-free paper. Applications for subscriptions should be made to the Editorial Office. The abstracts and full texts of published articles can be accessed free of charge at <http://www.anatoljcardiol.com>.

Financial support and advertising

The revenue of the *Anatolian Journal of Cardiology* is derived from subscription charges and advertisements. Institutions wishing to place an advertisement in the printed version of the journal or on the web page should contact KARE PUBLISHING.

Owner : Turkish Society of Cardiology
Address : Çobançeşme Sanayi Cad., No: 11, Nish İstanbul, A Blok, No: 47-48,
34196, Yenibosna, Bahçelievler, İstanbul, TURKEY
Phone : +90 212 221 17 30 / +90 0212 221 17 38
Fax : +90 212 221 17 54
E-mail : tkd@tkd.org.tr

Editor-in-Chief: Prof. Bilgin Timuralp

Address : ESOGÜ Tıp Fakültesi, Merkezi Derslikler, Kat: 2, No: 1, 26480, Meşelik, Eskişehir, TURKEY
Phone : +90 222 229 15 65 / +90 538 480 43 30
Fax : +90 222 229 15 85
E-mail : info@anatoljcardiol.com

Publisher : KARE PUBLISHING

Address : Altayçeşme Mah., Atatürk Caddesi, Engin Sokak, No: 3, Kat: 4, Daire: 20, 34843 Maltepe, İstanbul, TURKEY
Phone : +90 216 550 61 11
Fax : +90 216 550 61 12
E-mail : kareyayincilik@gmail.com

INSTRUCTIONS FOR AUTHORS

The *Anatolian Journal of Cardiology* is published in accordance with the principles of independent, unbiased, and double-blinded peer review. It publishes original research related to clinical, experimental and basic sciences on cardiology, editorial comments, reviews covering current issues, educational articles, scientific letters, case reports, letters to the editor, original images, articles on history of medicine and publication ethics, diagnostic puzzles, and interviews deemed appropriate for the purposes and scope of the journal.

The journal evaluates only the manuscripts submitted through its online submission system on the web site <http://www.anatoljcardiol.com>. Manuscripts sent by other means will not be accepted.

The primary conditions for the acceptance of manuscripts for publication are originality, scientific value and citation potential.

STATEMENTS AND GUIDELINES

Statements

- All statements and opinions expressed in the manuscripts published in the *Anatolian Journal of Cardiology* reflect the views of the author(s). All liability for the advertisements rests with the appropriate organization(s). The Turkish Society of Cardiology, the Editor-in-Chief and KARE do not accept any responsibility for articles and advertisements.
- The manuscripts submitted to the journal, except abstracts, presentations, reviews and parts of theses, should not have been accepted and published previously elsewhere in electronic or printed format. Manuscripts evaluated and rejected by other journals must mention any previous submissions and supply reviewer's reports. This will help to accelerate the evaluation process. If the submitted manuscript has been previously presented at a meeting, the name, date, city and country must be specified.
- The authors transfer all copyrights of the manuscript in the framework of national and international regulations to the Turkish Society of Cardiology as of evaluation process. A Copyright Transfer Form signed by corresponding author in order must be submitted to the journal with manuscript. After acceptance of manuscript, all of authors must fill and sign Copyright Transfer form. A separate form for each manuscript should be submitted. Manuscripts submitted without a Copyright Transfer Form will not be accepted. In the case of rejection, all copyrights transfer to the authors again. Authors must confirm that they will not submit the work to another journal, publish it in the original or another language and or allow a third party to use the manuscript without the written permission of the Turkish Society of Cardiology.
- All contents are the authors' responsibility. All financial liability and legal responsibility associated with the copyright of submitted tables, figures and other visual materials protected by national and international laws rest with the authors. The authors take responsibility for any legal proceedings issued against the journal.
- Rejected manuscripts will not be returned except for artwork.
- To clarify scientific contributions and responsibilities and any conflict of interest issues relevant to the manuscript, all parts of the 'Authors' Contribution' form must be completed by the corresponding author and the 'ICMJE Uniform Disclosure Form for Potential Conflicts of Interest' must be completed online by all authors. Both forms should be included in the manuscript at the time of original submission.

Guidelines

- The format of the manuscripts must be in accordance with the ICMJE Recommendations for the Conduct, Reporting, Editing and Publication of Scholarly Work in Medical Journals (updated in December 2014: <http://www.icmje.org/icmje-recommendations.pdf>).
- The presentation of the manuscripts must be in accordance with international guidelines. CONSORT should be used for randomized trials, STROBE for observational studies, STARD for diagnostic studies, PRISMA for systematic reviews and meta-analyses, ARRIVE for animal studies, and TREND for non-randomized behavior and public health studies.

Ethics

- All manuscripts will be vetted by the Editor-in-Chief's Office for possible plagiarism and duplication. Sanctions will be imposed in accordance with the guidelines of the Committee on Publication Ethics (COPE) and with the principles of the HEART Group when non-ethical issues arise. The authors must obtain the permission of the copyright holder for non-original tables, figures, graphs, images and other visuals.
- The authors should acknowledge and provide detailed information on any contributions in kind and financial support given by any foundations, institutions and firms.
- An ethics committee report prepared in conformity with the *WMA Declaration of Helsinki - Ethical Principles for Medical Research Involving Human Subjects and the Guide for the Care and Use of Laboratory Animals* is required to be submitted with experimental and clinical studies, drug trial studies and some case reports. Authors may be asked by the Editor-in-Chief's Office for an ethics committee report or similar in other circumstances also. Manuscripts reporting the results of experimental studies must explain in detail all procedures which volunteer subjects and patients have undergone and a statement indicating that consent for the study has been obtained from all subjects should be included in the text. Animal studies should clearly specify how pain or discomfort has been relieved.

PREPARATION AND SUBMISSION OF MANUSCRIPTS

Manuscript files should be prepared with Microsoft Office Word. The online submission system will direct authors during all stages of submission and provide necessary support for accelerating the submission process. A list of the files that should be supplied through the online submission system is provided below.

- Title Page
- Main Text
- Tables, Graphs and Figures
- Copyright Transfer Form
- Author Contribution Form
- ICMJE Uniform Disclosure Form for Potential Conflicts of Interest

1. Title Page

Information about the authors and their institutions should not be included in the main text, tables, figures and video documents. Since submitted manuscripts are evaluated by the reviewers through the online system, personal identification is excluded in the interests of unbiased interpretation. Thus, only information about the manuscript as specified below should be included on the title page. For each type of manuscript, it is mandatory to upload a title page as a separate Microsoft Word document through the online submission system. The title page should include the names of the authors with their latest academic degrees, and the name of the department and institution, city and country where the study was conducted. If the study was conducted in several institutions, the affiliation of each author must be specified with symbols. The correspondence address should contain the full name of the corresponding author, postal and e-mail addresses, phone and fax numbers. If the content of the manuscript has been presented before, the name, date and place of the meeting must be noted. Disclosure of conflict of interest, institutional and financial support, author contributions and acknowledgments should be included on the title page.

2. Main Text

The manuscripts submitted to our journal are classified and evaluated according to the manuscript types stated below. During preliminary evaluation, the editors assess whether a manuscript's format and sub-headings are prepared in accordance with the journal's guidelines. Therefore, it is important that authors check the accuracy of the main text in terms of the following.

A. Manuscript types

- Original investigation
- Editorial comment
- Review
- Education
- Scientific letter
- Case report
- Original image
- Letter to the editor
- Publication ethics
- Scientific puzzle
- Miscellaneous articles

B. References

C. Special Terms and Conditions

A. Manuscript types

• Original Research

- Title
- Structured Abstract: It should be structured with Objective, Methods, Results and Conclusion subheadings and should be limited to 250 words.
- Keywords: This section should contain a minimum of three and a maximum of six items in accordance with Medical Subject Headings (MeSH) terms prepared by the National Library of Medicine (NLM) and should be placed just below the abstract.
- Main Text: It should consist of Introduction, Methods, Results, Discussion, Limitations of the Study and Conclusion sections and should not exceed 5000 words excluding the references.
- References: The reference list should be provided following the Main Text. Limiting the number of references to 50 is usually sufficient.
- Tables, Figures and Images: They should be placed below the reference list and numbered according to their consecutive order in the main text.
- Title, Structured Abstract and Keywords should also be provided in Turkish for manuscripts submitted by Turkish authors or from Turkey. However, translations of these sections for manuscripts submitted by foreign authors outside Turkey will be the responsibility of the publisher.

Statistical Analysis: Statistical analysis should be conducted in accordance with the guidelines on reporting statistical data in medical journals [Altman DG, Gore SM, Gardner MJ, Pocock SJ. Statistical guidelines for contributors to medical journals. *Br Med J* 1983; 7; 1489-93 and Lang T, Altman D. Basic statistical reporting for articles published in clinical medical journals: the **SAMPL Guidelines**. In: Smart P, Maisonneuve H, Polderman A (editors). *Science Editors' Handbook*, European Association of Science Editors, 2013.]. The software used for statistical analysis must be described. Data must be expressed as mean \pm standard deviation when parametric tests are used to compare continuous variables. For nonparametric tests, data must be expressed as median (minimum-maximum) or percentiles (25th and 75th percentiles). In advanced and complex statistical analyses, relative risk (RR), odds ratio (OR) and hazard ratio (HR) must be supported by confidence intervals and p values. The outcomes of statistical analyses and interpretation of the results must be in evidence-based scientific language (Editors of Heart Group journals. Statement on matching language to the type of evidence used in describing outcomes data. *Anatolian Journal of Cardiology* 2012;12:709).

• Editorial Comment

Authors are selected and invited by the Editor-in-Chief. This type of manuscript aims at providing a brief commentary on an article published in the journal by a researcher who is an authority in the relevant field or by the reviewer of the article.

- Title
- Main Text: It should not include subheadings and should be limited to 500 words.
- References: The reference list should follow the main text and the number of references should be limited by 15.
- Abstract, Keywords, Tables, Figures, Images and other visuals are not included in editorial comments.
- The title should also be provided in Turkish for works submitted by Turkish authors or from Turkey. The title of the manuscripts submitted by foreign authors outside Turkey will be translated into Turkish by the Editor-in-Chief's Office.

• Review

Reviews prepared by authors with extensive knowledge on a particular field, which has been reflected in international literature by a high number of publications and citations, are evaluated. The authors may be invited by the Editor-in-Chief. A review should be prepared in the format describing, discussing and evaluating the current level of knowledge or topic that is to be used in the clinical practice and it should guide further studies.

- Title
- Abstract: It should not include subheadings and should be limited to 250 words.
- Keywords: This section should contain a minimum of three and a maximum of six items in accordance with Medical Subject Headings (MeSH) terms prepared by the National Library of Medicine (NLM) and should be provided just below the abstract.
- Main Text: It should include Introduction, other subheadings and Conclusion sections and should be limited to 5000 words excluding the references.
- References: The reference list should be placed just below the main text and the number of references should not exceed 50.
- Tables, Figures and Images: They should be provided after the reference list according to their order of appearance in the text.
- For reviews submitted by Turkish authors or from Turkey, Title, Abstract and Keywords should also be provided in Turkish. For reviews submitted by foreign authors outside Turkey, translations of these sections will be the responsibility of the publisher.

NOTE: The originality of the visuals included in the reviews should be assured by submission of an accompanying letter by the authors. Appropriate citation should be done for the visuals adapted from previously published sources, in accordance with the original versions of the printed or electronic copies. The written permission obtained from the copyright holder (publisher, journal or authors) should be sent to the Editor-in-Chief's Office.

• Education

Knowledge confirmed by the results of recent research studies, involved in education at academic level and used in clinical practices should be presented in detail in this type of manuscript.

- Title
- Abstract: It should not include subheadings and it should be limited to 250 words.
- Keywords: This section should contain a minimum of three and a maximum of six items in accordance with Medical Subject Headings (MeSH) terms prepared by the National Library of Medicine (NLM) and should be provided just below the abstract.
- Main Text: It should include Introduction, other subheadings and Conclusion sections and should not exceed 5000 words excluding the references.
- References: The reference list should be provided just below the main text and the number of references should be limited to 50.
- Tables, Figures and Images: They should be provided after the reference list according to their order of appearance in the main text.
- For educational articles submitted by Turkish authors or from Turkey, Title, Abstract and Keywords should also be provided in Turkish. For articles submitted by foreign authors outside Turkey, the translation of these sections will be carried out by the Editor-in-Chief's Office.

• Scientific Letter

Manuscripts which announce a new scientific invention, are clinically significant, and are in the form of a preliminary report are accepted for publication as scientific letters.

- Title
- Main Text: It should include Introduction, other subheadings and Conclusion sections and should not exceed 900 words excluding the references.
- References: The reference list should be provided just below the main text and the number of references should be limited to 10.
- Tables, Figures and Images: They should be provided below the reference list according to their order of appearance in the text and should be limited to two.
- Abstract and Keywords should not be included.
- For scientific letters submitted by Turkish authors or from Turkey, the Title should also be provided in Turkish. For letters submitted by foreign authors outside Turkey, the translation of these sections will be carried out by Editor-in-Chief's Office.

• Case Report

Since a limited number of case reports is published, only reports which are related to rare cases and conditions that constitute challenges in diagnosis and treatment, offer new methods or suggest knowledge not included in books, and are interesting and educational are accepted for publication.

- Title
- Main Text: It should include Introduction, Case Report, Discussion and Conclusion sections and should not exceed 700 words excluding the references.
- References: The reference list should follow the main text and the number of references should be limited to 10.

- Tables, Figures and Images: They should be provided after the reference list according to their order of appearance in the text and should be limited to two.
- Abstract and Keywords are not included.
- For case reports submitted by Turkish authors or from Turkey, the Title should also be provided in Turkish. For case reports submitted by foreign authors outside Turkey, the translation of these sections will be carried out by the Editor-in-Chief's Office.

NOTE 1: Case reports that include video images have a better chance of publication.

NOTE 2: For case reports to be taken under review, the first author must subscribe to the Anatolian Journal of Cardiology for one year. This requirement is only for the initiation of the preliminary assessment process. It does not guarantee acceptance for publication or evaluation. The manuscript of the subscriber will be evaluated strictly in accordance with the journal's criteria. Being a subscriber does not guarantee priority in terms of evaluation or guarantee publication. The VAT-inclusive subscription fee is 240 TL and the Anatolian Journal of Cardiology must be contacted for subscription procedures.

• Original Image

Impressive and rare images that reflect significant findings based on clinical science, shed light on fundamental mechanisms of diseases, emphasize abnormalities or introduce new treatment methods are accepted for publication.

- Title
- Main Text: It should not include subheadings and it should be limited to 250 words.
- Tables, Figures and Images: They should be provided after the main text according to their order of appearance in the text and should be limited to two.
- Abstract, Keywords and References are not included.
- For original images submitted by Turkish authors or from Turkey, the Title should also be written in Turkish. For images submitted by foreign authors outside Turkey, the translation of this section into Turkish will be carried out by the publisher.

NOTE 1: Those manuscripts with video images have a better chance of publication.

NOTE 2: Manuscripts prepared in accordance with original image criteria are published only as an e-page at the journal's website <http://www.anatoljcardiol.com>.

NOTE 3: For original image manuscripts to be taken under review, the first author must subscribe to the Anatolian Journal of Cardiology for one year. This requirement is only for the initiation of the preliminary assessment process. It does not guarantee acceptance for publication or evaluation. The manuscript of the subscriber will be evaluated strictly in accordance with the journal's criteria. Being a subscriber does not guarantee priority in terms of evaluation or guarantee publication. The VAT-inclusive subscription fee is 240 TL and the Turkish Society of Cardiology must be contacted for subscription procedures.

• Letter to the Editor

Letters to the Editor aim to discuss the importance of a manuscript previously published in the journal. This type of manuscripts should also include a comment on the published manuscript. Moreover, articles on topics of interest to readers within the scope of the journal, especially on educational issues, can be published in the format of a Letter to the Editor.

- Title
- Main Text: It should not include subheadings and it should be limited to 500 words.
- References: The reference list should follow the main text and the number of references should be limited to five. The volume, year, issue, page numbers, authors' names and title of the manuscript should be clearly stated, included in the list of references and cited within the text.
- Abstract, Keywords, Tables, Figures and Images, and other visuals are not included.
- For manuscripts submitted by Turkish authors or from Turkey, the Title should also be written in Turkish. For manuscripts submitted by foreign authors outside Turkey, the translation of this section into Turkish will be carried out by the publisher.

• Publication Ethics

These articles include current information on research and publication ethics and also cases of ethical violation.

- Title
- Main Text: It should not exceed 900 words.
- References: The reference list should follow the main text and the number of references should be limited to 10.
- Tables, Figures and Images: They should be placed after the reference list according to their order of appearance in the text and limited to two.
- Abstract and Keywords are not included.
- For articles submitted by Turkish authors or from Turkey, the Title should also be written in Turkish. For articles submitted by foreign authors outside Turkey, the translation of this section into Turkish will be carried out by the publisher.

• Scientific Puzzle

Images obtained directly or on operation, visuals revealed through EKG and/or imaging methods, and macroscopic-microscopic anatomical, pathological findings of attention-grabbing and rare cases can be published. Unlike original images, the diagnosis and outcome of the case and image are hidden at the beginning in diagnostic puzzles. Four multiple-choice questions are prepared. In the following pages of the journal, the correct answer in terms of precise diagnosis and outcome is given with an explanation and didactic images and then discussed. The Editor-in-Chief will convert suitable images into the format of a diagnostic puzzle with the authors' permission.

- Title
- Main Text: It should not exceed 500 words.
- References: The reference list should follow the main text and be limited to a maximum of three.
- Tables, Figures and Images: They should be placed after the reference list according to their order of appearance in the text and should be limited to five.
- Abstract and Keywords should not be included

- For diagnostic puzzles submitted by Turkish authors or from Turkey, the Title should also be provided in Turkish. For diagnostic puzzles submitted by foreign authors outside Turkey, the translation of this section into Turkish will be carried out by the publisher.

Miscellaneous

- This type of manuscript covers important events and obituaries.
- Title
- Main Text: It should not exceed 1000 words.
- References: The reference list should follow the main text and the number of references should be limited to 10.
- Tables, Figures and Images: They should be placed after the reference list according to their order of appearance in the text and should be limited to five.
- Abstract and Keywords should not be included.
- For manuscripts submitted by Turkish authors or from Turkey, the Title should also be provided in Turkish. For manuscripts submitted by foreign authors outside Turkey, the translation of this section into Turkish will be carried out by the publisher.

B. References

- References should be numbered in the order in which they are cited within the main text.
 - Only manuscripts published or accepted for publication should be cited.
 - Recent publications related to the topic of the manuscript should be reviewed.
 - References that are inaccessible and not indexed in any database should not be cited.
 - The titles of journals should be abbreviated in accordance with (Patrias K. Citing medicine: the NLM style guide for authors, editors, and publishers [Internet]. 2nd ed. Wendling DL, technical editor. Bethesda (MD): National Library of Medicine (US); 2007 - [updated 2011 Sep 15; cited Year Month Day].
 - For references with six and fewer authors, all authors should be listed. For references with more than six authors, the first six authors should be listed, followed by 'et al'.
- The style and punctuation of the references should be formatted as in the following examples.

Journal: Muller C, Buttner HJ, Peterson J, Roskomun H. A randomized comparison of clopidogrel and aspirin versus ticlopidine and aspirin after placement of coronary artery stents. *Circulation* 2000; 101: 590-3.

Book Chapter: Sherry S. Detection of thrombi. In: Strauss HE, Pitt B, James AE, editors. *Cardiovascular Medicine*. St Louis: Mosby; 1974. p.273-85.

Book with Single Author: Cohn PF. Silent myocardial ischemia and infarction. 3rd ed. New York: Marcel Dekker; 1993.

Editor(s) as author: Norman IJ, Redfern SJ, editors. *Mental health care for elderly people*. New York: Churchill Livingstone; 1996.

Conference Paper: Bengtsson S, Sotheman BG. Enforcement of data protection, privacy and security in medical informatics. In: Lun KC, Degoulet P, Piemme TE, Rienhoff O, editors. *MEDINFO 92. Proceedings of the 7th World Congress on Medical Informatics; 1992 Sept 6-10; Geneva, Switzerland. Amsterdam: North-Holland; 1992.p.1561-5.*

Scientific or Technical Report: Smith P, Golladay K. Payment for durable medical equipment billed during skilled nursing facility stays. Final report. Dallas (TX) Dept. of Health and Human Services (US). Office of Evaluation and Inspections: 1994 Oct. Report No: HHSIGOE 169200860.

Thesis: Kaplan SI. Post-hospital home health care: elderly access and utilization (dissertation). St Louis (MO): Washington Univ. 1995.

Manuscripts accepted for publication but not published yet: Leshner AI. Molecular mechanisms of cocaine addiction. *N Engl J Med* In press 1997.

Epub ahead of print articles: Aksu HU, Ertürk M, Gül M, Uslu N. Successful treatment of a patient with pulmonary embolism and biatrial thrombus. *Anatol J Cardiol* 2012 Dec 26. doi:10.5152/akd.2013.062. [Epub ahead of print]

Manuscript published in electronic format: Morse SS. Factors in the emergence of infectious diseases. *Emerg Infect Dis* (serial online) 1995 Jan-Mar (cited 1996 June 5): 1(1): (24 screens). Available from: URL: <http://www.cdc.gov/n.cidod/EID/cid.htm>.

C. Special Terms and Conditions

- For double-blinded peer-review process, the names of the corresponding author and other authors, their affiliations and any information on the study centres should not be included in any part of the submitted manuscripts and images, except the Title Page. This information should be added to the relevant section of the online submission system and included in the Title Page.
- Pharmaceutical products should be written with their generic names and brand and company names, city and country should be specified for medical equipment and devices.

3. Tables, Graphs and Figures

- Tables, Graphs, Figures and other visuals should be numbered in the order of their citation within the text and names of patients, doctors and institutions should not be disclosed.
- Tables should be prepared in a Microsoft Office Word document using the command 'Insert Table' and inserted at the end of the references in the main text.
- Tables should not be submitted in JPEG, TIFF or other visual formats. For microscopic images, the magnification ratio and staining technique used should be specified in addition to figure legends.

- All visuals should have a high resolution (minimum 300 dpi).
- The thickness of the lines in graphs should be sufficient to minimize loss of quality if size reduction is needed during the printing process. The width of the graphs should be 9 cm or 18 cm. Drawings should be performed by professionals. No grey colours should be used.
- Abbreviations should be explained in alphabetical order at the bottom of the tables, graphs and figures
- Roman numbers should be avoided in tables and figures within the text and their titles.
- Decimal numbers used in text, tables and figures should be separated by commas in Turkish sections and by dots in English sections.
- Tables should be easily understandable and should not repeat the data in the main text.
- In addition to the pictures included in case reports and original images, video and movie images are published on the journal's website. These images should be prepared in MPEG format with a maximum size of 2 MB. They should be submitted to the journal with the manuscript documents. The names of patients, doctors, institutions and places should be omitted from all documents.

NOTE: All visuals in the manuscripts are printed in black and white without charge. However, 300 TL per article must be paid if colour is required. The Editor-in-Chief's Office of the Anatolian Journal of Cardiology should be contacted for payment.

EVALUATION AND PUBLICATION

- The main text submitted to the journal must be in English. Manuscripts written in other languages are not accepted. Citation potential is higher for manuscripts in English.
- The Editor-in-Chief's Office checks the conformity of the manuscript with the journal's general guidelines before sending it to associate editors and reviewers. Any manuscripts not prepared in accordance with the journal's guidelines will be returned for revision. The evaluation period is limited to 21 days. If revision is requested, authors should submit their revised manuscripts within 24 days. Manuscripts and revisions should be submitted through the online manuscript submission system at the website <http://www.anatoljcardiol.com>. Manuscripts sent by e-mail will not be accepted.
- Manuscripts are evaluated in accordance with the principles of double-blinded peer review. Of the submitted manuscripts, those considered to be suitable are subjected to preliminary evaluation by the Editor-in-Chief's assistants in terms of style, format, etc. and by the Editor-in-Chief in terms of their content. Manuscripts considered to be scientifically adequate are assigned to four reviewers. These reviewers are independent experts and members of the editorial board who have published internationally on the topic of the manuscript. Research articles, systematic reviews and meta-analyses are also evaluated by the Editor-in-Chief's statistician counsellors in addition to peer review. When needed, the manuscripts are scanned by the Editor-in-Chief's Office using the iThenticate program for determination of plagiarism and non-ethical situations. Also, all manuscripts are reviewed and edited for compliance with the rules of English grammar. All contributing authors of a manuscript accepted for publication are deemed to have accepted the right of editors to make corrections provided that no fundamental change is made to the basic meaning of the original text. Manuscripts not accorded priority for publication by the Editor-in-Chief, Editor, Associate Editors and Referees are rejected.
- The retraction requests of the manuscripts close to the final decision in evaluation process, without any reasonable explanation (not contrary to the Publication Ethics) is considered in the scope of rejection decision. Manuscripts that are not revised and resubmitted within the specified time and fail to notify the journal accordingly will be rejected.
- Once a manuscript is accepted for publication, addition to the author list, removal from the author list and order change cannot be effected.
- Manuscripts accepted for publication are prepared as 'Epub ahead of print articles' and published with an assigned DOI on the journal website <http://www.anatoljcardiol.com>.
- Information on the latest status of manuscripts submitted for evaluation and other information about the journal are available on the website <http://www.anatoljcardiol.com>. Contact details for the Editor-in-Chief's Office and the publisher are given below.

Owner : Turkish Society of Cardiology

Address : Çobançeşme Sanayi Cad., No: 11, Nish İstanbul, A Blok, No: 47-48, 34196, Yenibosna, Bahçelievler, İstanbul, TURKEY
 Phone : +90 212 221 17 30 / +90 0212 221 17 38
 Fax : +90 212 221 17 54
 E-mail : tkd@tkd.org.tr

Editor-in-Chief: Prof. Bilgin Timuralp

Address : ESOĞU Tıp Fakültesi, Merkezi Derslikler, Kat: 2, No: 1, 26480, Meşelik, Eskişehir, TURKEY
 Phone : +90 222 229 15 65 / +90 538 480 43 30
 Fax : +90 222 229 15 85
 E-mail : info@anatoljcardiol.com

Publisher : KARE PUBLISHING

Address : Altayçeşme Mah., Atatürk Caddesi, Engin Sokak, No: 3, Kat: 4, Daire: 20, 34843 Maltepe, TURKEY
 Phone : +90 216 550 61 11
 Fax : +90 216 550 61 12
 E-mail : kareyayincilik@gmail.com

CONTENTS**EDITORIAL**

- ▶ Scientific competition, impact factor, and Altmetrics 313
Adnan Abacı; Ankara-Turkey


INVITED EDITORIAL

- ▶ Medicine and cardiology can have a high innovative potential in Turkey 314
Ayhan Olcay, Serdar B. Albayrak, Erdem Tezcan, Vedat Öztürk; İstanbul-Turkey

ORIGINAL INVESTIGATIONS

- ▶ Protection by nitrite against the ischemic effects induced by acute myocardial infarction in mice 315
Yafei Wang, Xin Song, Xia Yue, Hong Su, Yuanliang Gu, Linda Bowman, Min Ding, Baobo Zou, Jinshun Zhao, Xialu Lin; Ningbo, Morgantown, Xi'an-People's Republic of China
- ▶ Prospective evaluation of the feasibility, safety, and efficacy of Cocoon Duct Occluder for transcatheter closure of large patent ductus arteriosus: A single-center study with short- and medium-term follow-up results 321
Santosh Kumar Sinha, Mahmadula Razi, Rama Niwas Pandey, Prakash Kumar, Vinay Krishna, Mukesh Jitendra Jha, Vikas Mishra, Mohammad Asif, Nasar Abdali, Pradyot Tewari, Ramesh Thakur, Umeshwar Pandey, Chandra Mohan Varma; Uttar Pradesh-India
- ▶ Comparison of Warfarin use in terms of efficacy and safety in two different polyclinics 328
Salih Kılıç, Hatice Soner Kemal, Elif İlkay Yüce, Evrim Şimşek, Burcu Yağmur, Nuray Memişoğlu Akgül, Cahide Soydaş Çınar, Mehdi Zoghi, Cemil Gürgün; Gaziantep, İzmir-Turkey, Nicosia-Cyprus
- ▶ Impact of continuation of metformin prior to elective coronary angiography on acute contrast nephropathy in patients with normal or mildly impaired renal functions 334
Veysel Oktay, İlknur Calpar Çıralı, Ümit Yaşar Sinan, Ahmet Yıldız, Murat Kazım Erganlı; İstanbul-Turkey
- ▶ Aortic propagation velocity does not correlate with classical aortic stiffness parameters in healthy individuals 340
Hatem Arı, Fatih Kahraman, Yasin Türker, Serdar Güler, Hasan Aydın Baş, Doğan Erdoğan; Isparta-Turkey
- ▶ Association of female sex and heart rate with increased arterial stiffness in patients with type 2 diabetes mellitus 347
Min-Kyung Kang, Jae Myung Yu, Kwang Jin Chun, Jaehuk Choi, Seonghoon Choi, Namho Lee, Jung Rae Cho; Seoul-South Korea
- ▶ Evaluation of Tp-e interval, Tp-e/QT ratio, and Tp-e/QTc ratio in patients with mitral valve stenosis before and after balloon valvuloplasty 353
Muhammet Dural, Kadir Uğur Mert, Kemal İskenderov; Eskişehir-Turkey
- ▶ Dynamic thiol/disulphide homeostasis as a novel indicator of oxidative stress in obese children and its relationship with inflammatory-cardiovascular markers 361
Bahri Elmas, Mehmet Karacan, Pınar Dervişoğlu, Mustafa Kösecik, Şükriye Pınar İşgüven, Ceylan Bal; Sakarya, İstanbul, Ankara-Turkey

CASE REPORT

- ▶ Endovascular coil treatment of a coronary artery aneurysm related to polyarteritis nodosa  370
Özgür Bayturan, Serdar Tarhan, Özge Çöpkıran, Fatih Düzgün, Uğur Kemal Tezcan; Manisa-Turkey

CONTENTS



LETTERS TO THE EDITOR

- ▶ Simple electrocardiographic parameters predicting risk of hypertrophic cardiomyopathy: Too simple? 373
Serkan Çay, Özcan Özeke, Fırat Özcan; Ankara-Turkey
- ▶ Who are the main actors of cardiac device follow-up? Analysis of the super follow-up study 374
Enes Elvin Gül; İstanbul-Turkey
- ▶ Individualized intensified antiplatelet therapy based on platelet reactivity testing reduces the incidence of cardiovascular events in patients undergoing percutaneous coronary intervention 376
Michael Spartalis, Eleni Tzatzaki, Nikolaos I. Nikiteas, Eleftherios Spartalis; Athens-Greece
- ▶ Usefulness of left atrial speckle-tracking echocardiography in patients with atrial fibrillation 377
Razvan Gheorghita Mares, Dan Octavian Nistor, Mihai Vlad Golu; Targu Mures-Romania
- ▶ Ganglionated plexi interactions with atrio-ventricular node and right vagus nerve 379
Mariana Floria, Olivier Xhaet, Ileana Antohe; Iasi-Romania, CHU UCL Namur-Belgium
- ▶ Ibuprofen-induced Kounis syndrome with diffuse ST segment depression and atrial fibrillation 380
Murat Akçay; Samsun-Turkey

MISCELLANEOUS

- ▶ Who is Professor İlhan Paşaoğlu? 382
Cemil Sabuncu; Eskişehir-Turkey

E-PAGE ORIGINAL IMAGES

- ▶ Right atrial ball thrombus associated with atrial septal occluder device: A late complication of transcatheter atrial septal defect closure  E-9
Belma Kalaycı, Süleyman Kalaycı; Zonguldak-Turkey
- ▶ Giant right coronary artery aneurysm mimicking sinus Valsalva aneurysm of the aorta  E-9
Nehir Sucu, Abdülkadir Bilgiç, Dilek Yılmaz, Ayten Öztaş; Mersin-Turkey