

THE ANATOLIAN JOURNAL OF CARDIOLOGY



Original Investigations

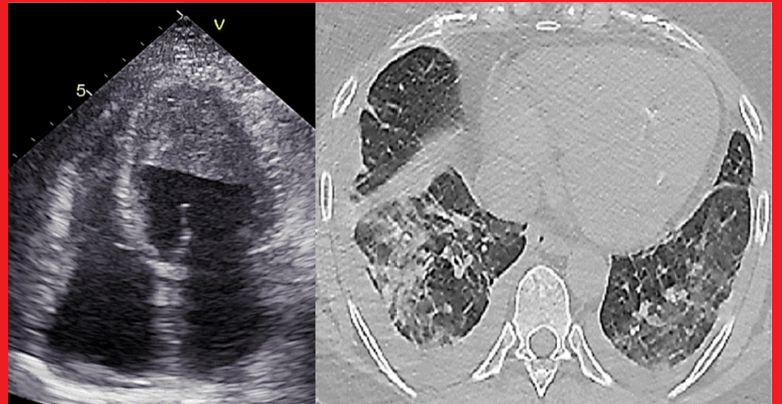
Intravesical Pressure and Diuresis Prediction
Tanyeri Üzel et al.

Effects of SGLT-2 Inhibitor on LAEF
Agrawal et al.

PARLA Index and Coronary Calcification
Duyuler et al.

Evaluation of Cardiac Findings in People
Özan Köse et al.

ED and fQRST Angle in Coronary Artery Disease
Özmen Yıldız and Özbilen



Editor-in-Chief

Prof. Dr. Çetin Erol, Ankara, Türkiye

Editors

Cem Barçın, Ankara, Türkiye
Asife Şahinarslan, Ankara, Türkiye

Previous Editor-in-Chief

Bilgin Timuralp, Eskişehir, Türkiye

Associate Editors

Nihal Akar Bayram, Ankara, Türkiye
Hasan Arı, Bursa, Türkiye
Serdal Arslan, Mersin, Türkiye
Oben Baysan, Ankara, Türkiye
Ahmet Kaya Bilge, İstanbul, Türkiye
Muzaffer Değertekin, İstanbul, Türkiye
Recep Demirbağ, Şanlıurfa, Türkiye
Ş. Remzi Erdem, Ankara, Türkiye
İlkay Erdoğan, Ankara, Türkiye
Faruk Ertas, Diyarbakır, Türkiye
Ali Serdar Fak, İstanbul, Türkiye
Deniz Göksedef, İstanbul, Türkiye
Sadi Güleç, Ankara, Türkiye

Can Yücel Karabay, İstanbul, Türkiye
Hande Kaymakçalan Çelebiler, İstanbul, Türkiye
Alper Kepez, İstanbul, Türkiye
Nurgül Keser, İstanbul, Türkiye
Teoman Kılıç, Kocaeli, Türkiye
Tarık Kıvrak, Elazığ, Türkiye
Ece Konaç, Ankara, Türkiye
Serdar Kula, Ankara, Türkiye
Selma Metintaş, Eskişehir, Türkiye
Levent Oktar, Ankara, Türkiye
Necla Özer, Ankara, Türkiye
Murat Özeren, Mersin, Türkiye
Leyla Elif Sade, Pittsburgh, PA, USA

Belma Turan, Ankara, Türkiye
Ercan Tutar, Ankara, Türkiye
Omaç Tüfekçioğlu, Ankara, Türkiye
F. Ajlan Tükün, Ankara, Türkiye
Erol Tülümen, İstanbul, Türkiye
Canan Uluoğlu, Ankara, Türkiye
Taner Ulus, Eskişehir, Türkiye
Mehmet Uzun, İstanbul, Türkiye
Özlem Yıldırım, İstanbul, Türkiye
Aylin Yıldırım, Ankara, Türkiye
Mehmet Birhan Yılmaz, İzmir, Türkiye
Dilek Çiçek Yılmaz, Mersin, Türkiye
Uygur Çağdaş Yüksel, Ankara, Türkiye

Senior Biostatistics Editor

Kazım Özdamar, Eskişehir, Türkiye

Biostatistics Editor

Fezan Mutlu, Eskişehir, Türkiye

Social Media Editor

Ümit Yaşar Sinan, İstanbul, Türkiye

Editorial Board

Selçuk Adabağ, Minneapolis, MN, USA
Rüçhan Akar, Ankara, Türkiye
Yasemin Alanay, İstanbul, Türkiye
Bülent Behlül Altunkeser, Konya, Türkiye
Emre Aslanger, İstanbul, Türkiye
Yasin Ay, İstanbul, Türkiye
Saide Aytekin, İstanbul, Türkiye
Gamze Babur Güler, İstanbul, Türkiye
Luigi P. Badano, Udine, Italy
Anzel Bahadır, Düzce, Türkiye
Yücel Balbay, Ankara, Türkiye
Adrian Baranchuk, Kingston, Ontario, Canada
Eugene Braunwald, Boston, MA, USA
Nico Bruining, Rotterdam, The Netherlands
Raffaele Bugiardi, Bologna, Italy
Stephane Carlier, Mons, Belgium
Anthony De Maria, San Diego, CA, USA
Ali Emin Denktas, Houston, TX, USA
Polychronis Dilaveris, Athens, Greece
Mohamed Egred, Newcastle upon Tyne, UK
Ertuğrul Ercan, İzmir, Türkiye
Okan Erdoğan, İstanbul, Türkiye

Ali Gholamrezanezhad, Tehran, Iran
Michael Gibson, Boston, MA, USA
Barış Güngör, İstanbul, Türkiye
Bülent Görenek, Eskişehir, Türkiye
Ali Gürbüz, İzmir, Türkiye
Yekta Gürlertop, Edirne, Türkiye
Suzan Hatipoğlu, Canterbury, UK
Cemil İzgi, London, UK
Serkan Kahraman, İstanbul, Türkiye
Arzu Kalaycı, Boston, MA, USA
Ergün Barış Kaya, Ankara, Türkiye
Cihangir Kaymaz, İstanbul, Türkiye
Mustafa Kılıçkap, Ankara, Türkiye
Derya Kocakaya, İstanbul, Türkiye
Serdar Küçüköğlu, İstanbul, Türkiye
Pedro Lemos, São Paulo, SP, Brazil
Thomas F. Lüscher, Zurich, Switzerland
Peter Macfarlane, Renfrewshire, Scotland
Orhan Maden, Ankara, Türkiye
Robert W. Mahley, San Francisco, CA, USA
Giuseppe Mancina, Milan, Italy
G.B. John Mancini, Vancouver BC, Canada

Kambis Mashayekhi Krozinger, Germany
Pascal Meier, London, UK
Franz H. Messerli, New York, USA
Sanem Nalbantgil, İzmir, Türkiye
Zeki Öngen, İstanbul, Türkiye
Mehmet Özkan, İstanbul, Türkiye
Fausto J. Pinto, Lisbon, Portugal
Sotirios N. Prapas, Athens, Greece
Francesco Saia, Bologna, Italy
M. Raşit Sayın, Trabzon, Türkiye
Mark V. Sherrid, New York, USA
Horst Sievert, Frankfurt, Germany
Richard Sutton, Monaco, Monaco
Gülten Taçoy, Ankara, Türkiye
S. Lale Tokgözoğlu, Ankara, Türkiye
Murat Tuzcu, Cleveland, OH, USA
Dilek Ural, İstanbul, Türkiye
Hadley Wilson, Charlotte, NC, USA
Bedrettin Yıldızeli, İstanbul, Türkiye
Hikmet Yorgun, Ankara, Türkiye
Jose L. Zamorano, Madrid, Spain
Wojciech Zareba, New York, USA
Yuqing Zhang, Beijing, China



**TURKISH
SOCIETY OF
CARDIOLOGY**

The Owner on behalf of the Turkish Society of Cardiology / Türk Kardiyoloji Derneği adına İmtiyaz Sahibi: Muzaffer Değertekin
Address: Nish İstanbul A Blok Kat: 8, No: 47-48 Çobançeşme Sanayi Cad. No: 11 Yenibosna, Bahçelievler 34196 İstanbul, Türkiye
Phone: +90 212 221 1730-38 Fax: +90 212 221 1754 E-mail: tkd@tkd.org.tr Web: www.tkd.org.tr Editor-in-Chief Office: Editorial
Office Assistant: Ebru Boz Sandıkçı, Phone: +90 (535) 461 41 62, E-mail: info@anatoljcardiol.com



KARE PUBLISHING
Address: Göztepe Mah. Fahrettin Kerim Gökay Cad. No: 200,
da: 2, Kadıköy, İstanbul, Türkiye
Phone: +90 216 550 61 11
Web: www.karepb.com
E-mail: kare@karepb.com

The Anatolian Journal of Cardiology is an international monthly periodical on cardiology published on independent, unbiased, double-blinded and peerreview principles. The journal's publication language is English however titles of articles, abstracts and Keywords are also published in Turkish on the journal's web site.

The Anatolian Journal of Cardiology aims to publish qualified and original clinical, experimental and basic research on cardiology at the international level. The journal's scope also covers editorial comments, reviews of innovations in medical education and practice, case reports, original images, scientific letters, educational articles, letters to the editor, articles on publication ethics, diagnostic puzzles, and issues in social cardiology.

The target readership includes academic members, specialists, residents, and general practitioners working in the fields of adult cardiology, pediatric cardiology, cardiovascular surgery and internal medicine.

The editorial and publication processes of the journal are conducted in accordance with the guidelines of the International Committee of Medical Journal Editors (ICMJE), the World Association of Medical Editors (WAME), the Council of Science Editors (CSE), the European Association of Science Editors (EASE), the Committee on Publication Ethics (COPE) and the HEART Group.

The Anatolian Journal of Cardiology is indexed in Science Citation Index Expanded, PubMed/MEDLINE, EMBASE, Scopus, EMCare, CINAHL, Gale/Cengage Learning, EBSCO, DOAJ, ProQuest, Index Copernicus and TÜBİTAK ULAKBİM TR Index.

The requirements for submission of manuscripts and detailed information about the evaluation process are available in the published journal and also as 'Instructions for Authors' on the web site (<http://www.anatoljcardiol.com>).

Statements and opinions expressed in the Anatolian Journal of Cardiology reflect the views of the author(s). All liability for the advertisements rests with the appropriate organization(s). The Turkish Society of Cardiology, the editor-in-chief and KARE do not accept any responsibility for these articles and advertisements.

Subscriptions

The Anatolian Journal of Cardiology is printed on acid-free paper. Applications for subscriptions should be made to the Editorial Office. The abstracts and full texts of published articles can be accessed free of charge at <http://www.anatoljcardiol.com>.

Financial support and advertising

The revenue of the Anatolian Journal of Cardiology is derived from subscription charges and advertisements. Institutions wishing to place an advertisement in the printed version of the journal or on the web page should contact KARE.

Owner : Turkish Society of Cardiology
Address : Çobançeşme Sanayi Cad., No: 11, Nish İstanbul, A Blok, No: 47-48,
34196, Yenibosna, Bahçelievler, İstanbul, Türkiye
Phone : +90 212 221 17 30 / +90 0212 221 17 38
Fax : +90 212 221 17 54
E-mail : tkd@tkd.org.tr

Editor-in-Chief : Prof. Dr. Çetin Erol
Address : Çobançeşme Sanayi Cad., No: 11, Nish İstanbul, A Blok, No: 47-48,
34196, Yenibosna, Bahçelievler, İstanbul, Türkiye
Phone : +90 (535) 461 41 62
Fax : +90 (212) 221 17 54
E-mail : info@anatoljcardiol.com

Publisher : KARE PUBLISHING
Address : Göztepe Mah. Fahrettin Kerim Gökay Cad. No: 200, da: 2, Kadıköy, İstanbul, Türkiye
Phone : +90 216 550 61 11
E-mail : kare@karepb.com
Web page : www.karepb.com

INSTRUCTIONS FOR AUTHORS

The Anatolian Journal of Cardiology is published in accordance with the principles of independent, unbiased, and double-blinded peer review. It publishes original research related to clinical, experimental and basic sciences on cardiology, editorial comments, reviews covering current issues, educational articles, scientific letters, case reports, letters to the editor, original images, articles on history of medicine and publication ethics, diagnostic puzzles, and interviews deemed appropriate for the purposes and scope of the journal.

The journal evaluates only the manuscripts submitted through its online submission system on the web site <http://www.anatoljcardiol.com>. Manuscripts sent by other means will not be accepted.

The primary conditions for the acceptance of manuscripts for publication are originality, scientific value and citation potential.

STATEMENTS AND GUIDELINES

Statements

- All statements and opinions expressed in the manuscripts published in the Anatolian Journal of Cardiology reflect the views of the author(s). All liability for the advertisements rests with the appropriate organization(s). The Turkish Society of Cardiology, the Editor-in-Chief and KARE do not accept any responsibility for articles and advertisements.
- The manuscripts submitted to the journal, except abstracts, presentations, reviews and parts of theses, should not have been accepted and published previously elsewhere in electronic or printed format. Manuscripts evaluated and rejected by other journals must mention any previous submissions and supply reviewer's reports. This will help to accelerate the evaluation process. If the submitted manuscript has been previously presented at a meeting, the name, date, city and country must be specified.
- The authors transfer all copyrights of the manuscript in the framework of national and international regulations to the Turkish Society of Cardiology as of evaluation process. A Copyright Transfer Form signed by corresponding author in order must be submitted to the journal with manuscript. After acceptance of manuscript, all of authors must fill and sign Copyright Transfer form. A separate form for each manuscript should be submitted. Manuscripts submitted without a Copyright Transfer Form will not be accepted. In the case of rejection, all copyrights transfer to the authors again. Authors must confirm that they will not submit the work to another journal, publish it in the original or another language and or allow a third party to use the manuscript without the written permission of the Turkish Society of Cardiology.
- All contents are the authors' responsibility. All financial liability and legal responsibility associated with the copyright of submitted tables, figures and other visual materials protected by national and international laws rest with the authors. The authors take responsibility for any legal proceedings issued against the journal.
- Rejected manuscripts will not be returned except for artwork.
- To clarify scientific contributions and responsibilities and any conflict of interest issues relevant to the manuscript, all parts of the 'Authors' Contribution' form must be completed by the corresponding author and the 'ICMJE Uniform Disclosure Form for Potential Conflicts of Interest' must be completed online by all authors. Both forms should be included in the manuscript at the time of original submission.

Guidelines

- The format of the manuscripts must be in accordance with the ICMJE Recommendations for the Conduct, Reporting, Editing and Publication of Scholarly Work in Medical Journals (updated in December 2014: <http://www.icmje.org/icmje-recommendations.pdf>).
- The presentation of the manuscripts must be in accordance with international guidelines. CONSORT should be used for

randomized trials, STROBE for observational studies, STARD for diagnostic studies, PRISMA for systematic reviews and meta-analyses, ARRIVE for animal studies, and TREND for non-randomized behavior and public health studies.

Ethics

- All manuscripts will be vetted by the Editor-in-Chief's Office for possible plagiarism and duplication. Sanctions will be imposed in accordance with the guidelines of the Committee on Publication Ethics (COPE) and with the principles of the HEART Group when non-ethical issues arise. The authors must obtain the permission of the copyright holder for non-original tables, figures, graphs, images and other visuals.
- The authors should acknowledge and provide detailed information on any contributions in kind and financial support given by any foundations, institutions and firms.
- An ethics committee report prepared in conformity with the WMA Declaration of Helsinki - Ethical Principles for Medical Research Involving Human Subjects and the Guide for the Care and Use of Laboratory Animals is required to be submitted with experimental and clinical studies, drug trial studies and some case reports. Authors may be asked by the Editor-in-Chief's Office for an ethics committee report or similar in other circumstances also. Manuscripts reporting the results of experimental studies must explain in detail all procedures which volunteer subjects and patients have undergone and a statement indicating that consent for the study has been obtained from all subjects should be included in the text. Animal studies should clearly specify how pain or discomfort has been relieved.

Artificial Intelligence (AI)–Assisted Technology

At submission, the journal should require authors to disclose whether they used artificial intelligence (AI)–assisted technologies (such as Large Language Models [LLMs], chatbots, or image creators) in the production of submitted work. Authors who use such technology should describe, in both the cover letter and the submitted work, how they used it. Use of AI for writing assistance should be reported in the acknowledgment section. Authors who used AI technology to conduct the study should describe its use in the methods section in sufficient detail to enable replication to the approach, including the tool used, version, and prompts where applicable. Chatbots (such as ChatGPT) should not be listed as authors because they cannot be responsible for the accuracy, integrity, and originality of the work, and these responsibilities are required for authorship. Therefore, humans are responsible for any submitted material that included the use of AI-assisted technologies. Authors should carefully review and edit the result because AI can generate authoritative-sounding output that can be incorrect, incomplete, or biased. Authors should not list AI and AI-assisted technologies as an author or co-author, nor cite AI as an author. Authors should be able to assert that there is no plagiarism in their paper, including in text and images produced by the AI. Humans must ensure there is appropriate attribution of all quoted material, including full citations.

PREPARATION AND SUBMISSION OF MANUSCRIPTS

Manuscript files should be prepared with Microsoft Office Word. The online submission system will direct authors during all stages of submission and provide necessary support for accelerating the submission process. A list of the files that should be supplied through the online submission system is provided below.

1. Title Page
2. Main Text
3. Tables, Graphs and Figures
4. Copyright Transfer Form

5. Author Contribution Form

6. ICMJE Uniform Disclosure Form for Potential Conflicts of Interest

1. Title Page

Information about the authors and their institutions should not be included in the main text, tables, figures and video documents. Since submitted manuscripts are evaluated by the reviewers through the online system, personal identification is excluded in the interests of unbiased interpretation. Thus, only information about the manuscript as specified below should be included on the title page. For each type of manuscript, it is mandatory to upload a title page as a separate Microsoft Word document through the online submission system. The title page should include the names of the authors with their latest academic degrees, and the name of the department and institution, city and country where the study was conducted. If the study was conducted in several institutions, the affiliation of each author must be specified with symbols. The correspondence address should contain the full name of the corresponding author, postal and e-mail addresses, phone and fax numbers. If the content of the manuscript has been presented before, the name, date and place of the meeting must be noted. Disclosure of conflict of interest, institutional and financial support, author contributions, acknowledgments, and ORCID iDs of the authors should be included on the title page.

2. Main Text

The manuscripts submitted to our journal are classified and evaluated according to the manuscript types stated below. During preliminary evaluation, the editors assess whether a manuscript's format and sub-headings are prepared in accordance with the journal's guidelines. Therefore, it is important that authors check the accuracy of the main text in terms of the following.

A. Manuscript types

- Original investigation
- Editorial comment
- Review
- Education
- Scientific letter
- Case report
- Original image
- Letter to the editor
- Publication ethics
- Scientific puzzle
- Miscellaneous articles

B. References

C. Special Terms and Conditions

A. Manuscript types

- **Original Research**
- Title
- Highlights: Each submission should be accompanied by 3 to 5 "highlight points" which should emphasize the most striking results of the study and highlight the message that is intended to be conveyed to the readers. It should be limited to 70 words.
- Structured Abstract: It should be structured with Objective, Methods, Results and Conclusion subheadings and should be limited to 250 words.
- Keywords: This section should contain a minimum of three and a maximum of six items in accordance with Medical Subject Headings (MeSH) terms prepared by the National Library of Medicine (NLM) and should be placed just below the abstract.
- Main Text: It should consist of Introduction, Methods, Results, Discussion, Limitations of the Study and Conclusion sections and should not exceed 5000 words excluding the references.

- References: The reference list should be provided following the Main Text. Limiting the number of references to 50 is usually sufficient.
- Tables, Figures and Images: They should be placed below the reference list and numbered according to their consecutive order in the main text.
- Title, Structured Abstract and Keywords should also be provided in Turkish for manuscripts submitted by Turkish authors or from Türkiye. However, translations of these sections for manuscripts submitted by foreign authors outside Türkiye will be the responsibility of the publisher.

Statistical Analysis: Statistical analysis should be conducted in accordance with the guidelines on reporting statistical data in medical journals [Altman DG, Gore SM, Gardner MJ, Pocock SJ. Statistical guidelines for contributors to medical journals. Br Med J 1983; 7; 1489-93 and Lang T, Altman D. Basic statistical reporting for articles published in clinical medical journals: the SAMPL Guidelines. In: Smart P, Maisonneuve H, Polderman A (editors). Science Editors' Handbook, European Association of Science Editors, 2013.]. The software used for statistical analysis must be described. Data must be expressed as mean \pm standard deviation when parametric tests are used to compare continuous variables. For nonparametric tests, data must be expressed as median (minimum-maximum) or percentiles (25th and 75th percentiles). In advanced and complex statistical analyses, relative risk (RR), odds ratio (OR) and hazard ratio (HR) must be supported by confidence intervals and p values. The outcomes of statistical analyses and interpretation of the results must be in evidence-based scientific language (Editors of Heart Group journals. Statement on matching language to the type of evidence used in describing outcomes data. Anatolian Journal of Cardiology 2012;12:709).

• Editorial Comment

Authors are selected and invited by the Editor-in-Chief. This type of manuscript aims at providing a brief commentary on an article published in the journal by a researcher who is an authority in the relevant field or by the reviewer of the article.

- Title
- Main Text: It should not include subheadings and should be limited to 500 words.
- References: The reference list should follow the main text and the number of references should be limited by 15.
- Abstract, Keywords, Tables, Figures, Images and other visuals are not included in editorial comments.
- The title should also be provided in Turkish for works submitted by Turkish authors or from Türkiye. The title of the manuscripts submitted by foreign authors outside Türkiye will be translated into Turkish by the Editor-in-Chief's Office.

• Review

Reviews prepared by authors with extensive knowledge on a particular field, which has been reflected in international literature by a high number of publications and citations, are evaluated. The authors may be invited by the Editor-in-Chief. A review should be prepared in the format describing, discussing and evaluating the current level of knowledge or topic that is to be used in the clinical practice and it should guide further studies.

- Title
- Highlights: Each submission should be accompanied by 3 to 5 "highlight points" which should emphasize the most striking results of the study and highlight the message that is intended to be conveyed to the readers. It should be limited to 70 words.
- Abstract: It should not include subheadings and should be limited to 250 words.
- Keywords: This section should contain a minimum of three and a maximum of six items in accordance with Medical Subject

Headings (MeSH) terms prepared by the National Library of Medicine (NLM) and should be provided just below the abstract.

- **Main Text:** It should include Introduction, other subheadings and Conclusion sections and should be limited to 5000 words excluding the references.
- **References:** The reference list should be placed just below the main text and the number of references should not exceed 50.
- **Tables, Figures and Images:** They should be provided after the reference list according to their order of appearance in the text.
- For reviews submitted by Turkish authors or from Türkiye, Title, Abstract and Keywords should also be provided in Turkish. For reviews submitted by foreign authors outside Türkiye, translations of these sections will be the responsibility of the publisher.

NOTE: The originality of the visuals included in the reviews should be assured by submission of an accompanying letter by the authors. Appropriate citation should be done for the visuals adapted from previously published sources, in accordance with the original versions of the printed or electronic copies. The written permission obtained from the copyright holder (publisher, journal or authors) should be sent to the Editor-in-Chief's Office.

• Education

Knowledge confirmed by the results of recent research studies, involved in education at academic level and used in clinical practices should be presented in detail in this type of manuscript.

- **Title**
- **Abstract:** It should not include subheadings and it should be limited to 250 words.
- **Keywords:** This section should contain a minimum of three and a maximum of six items in accordance with Medical Subject Headings (MeSH) terms prepared by the National Library of Medicine (NLM) and should be provided just below the abstract.
- **Main Text:** It should include Introduction, other subheadings and Conclusion sections and should not exceed 5000 words excluding the references.
- **References:** The reference list should be provided just below the main text and the number of references should be limited to 50.
- **Tables, Figures and Images:** They should be provided after the reference list according to their order of appearance in the main text.
- For educational articles submitted by Turkish authors or from Türkiye, Title, Abstract and Keywords should also be provided in Turkish. For articles submitted by foreign authors outside Türkiye, the translation of these sections will be carried out by the Editor-in-Chief's Office.

• Scientific Letter

Manuscripts which announce a new scientific invention, are clinically significant, and are in the form of a preliminary report are accepted for publication as scientific letters.

- **Title**
- **Main Text:** It should include Introduction, other subheadings and Conclusion sections and should not exceed 900 words excluding the references.
- **References:** The reference list should be provided just below the main text and the number of references should be limited to 10.
- **Tables, Figures and Images:** They should be provided below the reference list according to their order of appearance in the text and should be limited to two.
- **Abstract and Keywords** should not be included.
- For scientific letters submitted by Turkish authors or from Türkiye, the Title should also be provided in Turkish. For letters submitted by foreign authors outside Türkiye, the translation of these sections will be carried out by Editor-in-Chief's Office.

• Case Report

Since a limited number of case reports is published, only reports which are related to rare cases and conditions that constitute challenges in diagnosis and treatment, offer new methods or suggest knowledge not included in books, and are interesting and educational are accepted for publication.

- **Title**
- **Main Text:** It should include Introduction, Case Report, Discussion and Conclusion sections and should not exceed 700 words excluding the references.
- **References:** The reference list should follow the main text and the number of references should be limited to 10.
- **Tables, Figures and Images:** They should be provided after the reference list according to their order of appearance in the text and should be limited to two.
- **Abstract and Keywords** are not included.
- For case reports submitted by Turkish authors or from Türkiye, the Title should also be provided in Turkish. For case reports submitted by foreign authors outside Türkiye, the translation of these sections will be carried out by the Editor-in-Chief's Office.

NOTE 1: Case reports that include video images have a better chance of publication.

• Original Image

Impressive and rare images that reflect significant findings based on clinical science, shed light on fundamental mechanisms of diseases, emphasize abnormalities or introduce new treatment methods are accepted for publication.

- **Title**
- **Main Text:** It should not include subheadings and it should be limited to 250 words.
- **Tables, Figures and Images:** They should be provided after the main text according to their order of appearance in the text and should be limited to two.
- **Abstract, Keywords and References** are not included.
- For original images submitted by Turkish authors or from Türkiye, the Title should also be written in Turkish. For images submitted by foreign authors outside Türkiye, the translation of this section into Turkish will be carried out by the publisher.

NOTE 1: Those manuscripts with video images have a better chance of publication.

NOTE 2: Manuscripts prepared in accordance with original image criteria are published only as an e-page at the journal's website <http://www.anatoljcardiol.com>.

• Letter to the Editor

Letters to the Editor aim to discuss the importance of a manuscript previously published in the journal. This type of manuscript should also include a comment on the published manuscript. Moreover, articles on topics of interest to readers within the scope of the journal, especially on educational issues, can be published in the format of a Letter to the Editor.

- **Title**
- **Main Text:** It should not include subheadings and it should be limited to 500 words.
- **References:** The reference list should follow the main text and the number of references should be limited to five. The volume, year, issue, page numbers, authors' names and title of the manuscript should be clearly stated, included in the list of references and cited within the text.
- **Abstract, Keywords, Tables, Figures and Images, and other visuals** are not included.

- For manuscripts submitted by Turkish authors or from Türkiye, the Title should also be written in Turkish. For manuscripts submitted by foreign authors outside Türkiye, the translation of this section into Turkish will be carried out by the publisher.

• Publication Ethics

These articles include current information on research and publication ethics and also cases of ethical violation.

- Title
- Main Text: It should not exceed 900 words.
- References: The reference list should follow the main text and the number of references should be limited to 10.
- Tables, Figures and Images: They should be placed after the reference list according to their order of appearance in the text and limited to two.
- Abstract and Keywords are not included.
- For articles submitted by Turkish authors or from Türkiye, the Title should also be written in Turkish. For articles submitted by foreign authors outside Türkiye, the translation of this section into Turkish will be carried out by the publisher.

• Scientific Puzzle

Images obtained directly or on operation, visuals revealed through EKG and/or imaging methods, and macroscopic-microscopic anatomical, pathological findings of attentiongrabbing and rare cases can be published. Unlike original images, the diagnosis and outcome of the case and image are hidden at the beginning in diagnostic puzzles. Four multiple-choice questions are prepared. In the following pages of the journal, the correct answer in terms of precise diagnosis and outcome is given with an explanation and didactic images and then discussed. The Editor-in-Chief will convert suitable images into the format of a diagnostic puzzle with the authors' permission.

- Title
- Main Text: It should not exceed 500 words.
- References: The reference list should follow the main text and be limited to a maximum of three.
- Tables, Figures and Images: They should be placed after the reference list according to their order of appearance in the text and should be limited to five.
- Abstract and Keywords should not be included
- For diagnostic puzzles submitted by Turkish authors or from Türkiye, the Title should also be provided in Turkish. For diagnostic puzzles submitted by foreign authors outside Türkiye, the translation of this section into Turkish will be carried out by the publisher.

• Miscellaneous

This type of manuscript covers important events and obituaries.

- Title
- Main Text: It should not exceed 1000 words.
- References: The reference list should follow the main text and the number of references should be limited to 10.
- Tables, Figures and Images: They should be placed after the reference list according to their order of appearance in the text and should be limited to five.
- Abstract and Keywords should not be included.
- For manuscripts submitted by Turkish authors or from Türkiye, the Title should also be provided in Turkish. For manuscripts submitted by foreign authors outside Türkiye, the translation of this section into Turkish will be carried out by the publisher.

B. References

- References should be numbered in the order in which they are cited within the main text.
- Only manuscripts published or accepted for publication should be cited.
- Recent publications related to the topic of the manuscript should be reviewed.

- References that are inaccessible and not indexed in any database should not be cited.
- The titles of journals should be abbreviated in accordance with (Patrias K. Citing medicine: the NLM style guide for authors, editors, and publishers [Internet]. 2nd ed. Wendling DL, technical editor. Bethesda (MD): National Library of Medicine (US); 2007 - [updated 2011 Sep 15; cited Year Month Day].

When there are six or fewer authors, all authors should be listed. If there are seven or more authors, the first three authors should be listed followed by "et al." In the main text of the manuscript, references should be cited in superscript after punctuation. Both in-text citations and the references must be prepared according to the AMA Manual of style. The style and punctuation of the references should be formatted as in the following examples.

Journal: Muller C, Buttner HJ, Peterson J, Roskomun H. A randomized comparison of clopidogrel and aspirin versus ticlopidine and aspirin after placement of coronary artery stents. *Circulation*. 2000;101(6):590-593.

Book Chapter: Sherry S. Detection of thrombi. In: Strauss HE, Pitt B, James AE, eds. *Cardiovascular Medicine*. St Louis: Mosby; 1974:273-285.

Book with Single Author: Cohn PF. *Silent Myocardial Ischemia and Infarction*. 3rd ed. New York: Marcel Dekker; 1993.

Editor(s) as author: Norman IJ, Redfern SJ, eds. *Mental Health Care for Elderly People*. New York: Churchill Livingstone; 1996.

Conference Paper: Bengissou S, Sothemin BG. Enforcement of data protection, privacy and security in medical informatics. In: Lun KC, Degoulet P, Piemme TE, Rienhoff O, eds. MEDINFO 92. Paper presented at the 7th World Congress on Medical Informatics; September 6-10 1992; Geneva, Switzerland. Amsterdam: North-Holland; 1992:1561-1565.

Scientific or Technical Report: Smith P, Golladay K. Payment for durable medical equipment billed during skilled nursing facility stays. Final report. Dallas (TX) Dept. of Health and Human Services (US). Office of Evaluation and Inspections: October 1994. Report No: HHSIGOE 169200860.

Thesis: Kaplan SI. *Post-hospital Home Health Care: Elderly Access and Utilization*. Dissertation. Washington University; 1995.

Manuscripts accepted for publication but not published yet: Leshner AI. *Molecular Mechanisms of Cocaine Addiction*. *N Engl J Med*. Forthcoming 1997.

Epub ahead of print articles: Aksu HU, Ertürk M, Gül M, Uslu N. Successful treatment of a patient with pulmonary embolism and biatrial thrombus. *Anatolian J Cardiol*. December 26, 2012. doi: 10.5152/akd.2013.062. [Epub ahead of print].

Manuscript published in electronic format: Morse SS. Factors in the emergence of infectious diseases. *Emerg Infect Dis (serial online)*. 1995 Jan-Mar (cited 1996 June 5): 1(1): (24 screens). Available from: <http://www.cdc.gov/ncidod/EID/cid.htm>.

C. Special Terms and Conditions

- For double-blinded peer-review process, the names of the corresponding author and other authors, their affiliations and any information on the study centres should not be included in any part of the submitted manuscripts and images, except the Title Page.
This information should be added to the relevant section of the online submission system and included in the Title Page.
- Pharmaceutical products should be written with their generic names and brand and company names, city and country should be specified for medical equipment and devices.

3. Tables, Graphs and Figures

- Tables, Graphs, Figures and other visuals should be numbered in the order of their citation within the text and names of patients, doctors and institutions should not be disclosed.
- Tables should be prepared in a Microsoft Office Word document using the command 'Insert Table' and inserted at the end of the references in the main text.
- Tables should not be submitted in JPEG, TIFF or other visual formats. For microscopic images, the magnification ratio and staining technique used should be specified in addition to figure legends.
- All visuals should have a high resolution (minimum 300 dpi).
- The thickness of the lines in graphs should be sufficient to minimize loss of quality if size reduction is needed during the printing process. The width of the graphs should be 9 cm or 18 cm. Drawings should be performed by professionals. No grey colours should be used.
- Abbreviations should be explained in alphabetical order at the bottom of the tables, graphs and figures
- Roman numbers should be avoided in tables and figures within the text and their titles.
- Decimal numbers used in text, tables and figures should be separated by commas in Turkish sections and by dots in English sections.
- Tables should be easily understandable and should not repeat the data in the main text.
- In addition to the pictures included in case reports and original images, video and movie images are published on the journal's website. These images should be prepared in MPEG format with a maximum size of 2 MB. They should be submitted to the journal with the manuscript documents. The names of patients, doctors, institutions and places should be omitted from all documents.

NOTE: All visuals in the manuscripts are printed in black and white without charge. If color printing is required, Turkish authors must pay 300 TL, while foreign authors must pay 300 USD. For payment methods, please contact the Editor-in-Chief's Office of the Anatolian Journal of Cardiology.

EVALUATION AND PUBLICATION

- The main text submitted to the journal must be in English. Manuscripts written in other languages are not accepted. Citation potential is higher for manuscripts in English.
- The Editor-in-Chief's Office checks the conformity of the manuscript with the journal's general guidelines before sending it to associate editors and reviewers. Any manuscripts not prepared in accordance with the journal's guidelines will be returned for revision. The evaluation period is limited to 21 days. If revision is requested, authors should submit their revised manuscripts within 24 days. Manuscripts and revisions should be submitted through the online manuscript submission system at the website <http://www.anatoljcardiol.com>. Manuscripts sent by e-mail will not be accepted.
- Manuscripts are evaluated in accordance with the principles of double-blinded peer review. Of the submitted manuscripts, those considered to be suitable are subjected to preliminary evaluation by the Editor-in-Chief's assistants in terms of style, format, etc. and by the Editor-in-Chief in terms of their content. Manuscripts considered to be scientifically adequate are assigned to four reviewers. These reviewers are independent experts and members of the editorial board who have published internationally on the topic of the manuscript. Research articles, systematic reviews and meta-analyses are also evaluated by the Editor-in-Chief's statistician counsellors in addition to peer review. When needed, the manuscripts are scanned by the Editor-in-Chief's Office using the iThenticate program for determination of plagiarism and non-ethical situations. Also,

all manuscripts are reviewed and edited for compliance with the rules of English grammar. All contributing authors of a manuscript accepted for publication are deemed to have accepted the right of editors to make corrections provided that no fundamental change is made to the basic meaning of the original text. Manuscripts not accorded priority for publication by the Editor-in-Chief, Editor, Associate Editors and Referees are rejected.

- Reviewers who seek assistance from a trainee or colleague in the performance of a review should acknowledge these individuals' contributions in the written comments submitted to the editor. Reviewers must maintain the confidentiality of the manuscript, which may prohibit the uploading of the manuscript to software or other AI technologies where confidentiality cannot be assured. Reviewers must request permission from the journal prior to using AI technology to facilitate their review.
- The retraction requests of the manuscripts close to the final decision in evaluation process, without any reasonable explanation (not contrary to the Publication Ethics) is considered in the scope of rejection decision. Manuscripts that are not revised and resubmitted within the specified time and fail to notify the journal accordingly will be rejected.
- Once a manuscript is accepted for publication, addition to the author list, removal from the author list and order change cannot be effected.
- Manuscripts accepted for publication are prepared as 'Epub ahead of print articles' and published with an assigned DOI on the journal website <http://www.anatoljcardiol.com>.
- Information on the latest status of manuscripts submitted for evaluation and other information about the journal are available on the website <http://www.anatoljcardiol.com>. Contact details for the Editor-in-Chief's Office and the publisher are given below.

ARTICLE PROCESSING CHARGE

- As of February 1, 2025, the Anatolian Journal of Cardiology will request an article processing charge (APC) for newly submitted manuscripts accepted for publication. The APC will be set at USD 600 + 20% VAT for research articles, review articles, and meta-analyses, and USD 300 + 20% VAT for case reports.
- APCs finance the publishing services offered by the journal, such as managing peer reviews, handling administrative expenses, producing articles in PDF and other formats, distributing articles to different platforms, and other publishing-related activities.

Owner	: Turkish Society of Cardiology
Address	: Çobançeşme Sanayi Cad., No: 11, Nish İstanbul, A Blok, No: 47-48, 34196, Yenibosna, Bahçelievler, İstanbul, Türkiye
Phone	: +90 212 221 17 30 / +90 0212 221 17 38
Fax	: +90 212 221 17 54
E-mail	: tkd@tkd.org.tr
Editor-in-Chief	: Prof. Dr. Çetin Erol
Address	: Çobançeşme Sanayi Cad., No: 11, Nish İstanbul, A Blok, No: 47-48, 34196, Yenibosna, Bahçelievler, İstanbul, Türkiye
Phone	: +90 (535) 461 41 62
Fax	: +90 (212) 221 17 54
E-mail	: info@anatoljcardiol.com
Publisher	: KARE PUBLISHING
Address	: Göztepe Mah. Fahrettin Kerim Gökay Cad. No: 200, da: 2, Kadıköy, İstanbul, Türkiye
Phone	: +90 216 550 61 11
E-mail	: kare@karepb.com
Web page	: www.karepb.com

EDITORIAL

►1 **New Year and New Manuscripts**

Çetin Erol; *Ankara, Türkiye*

META-ANALYSIS

►2 **Efficacy and Safety of Transarterial Retrograde Approach in Ventricular Septal Defect Closure: A Systematic Review and Meta-Analysis**

Hiba Hisham Alshikh Ali, Sabry Babiker Hassan Sayed, Ali Abubaker Ahmed Gafoon, Mohamad Alshekh Ali, Nadir Abdelrahman, Khalid Saad, Roaa Suliman, Esraa Ahmed Ibrahim Eltayeb, Ahmed Attallah; *Michigan, United States, Madinah, Doha, Qatar, Jeddah, Saudi Arabia*

ORIGINAL INVESTIGATIONS

►9 **Intravesical Pressure Monitoring: A Practical Method for Predicting Diuresis in Patients with Congestive Heart Failure**

Seda Tanyeri Üzel, Berhan Keskin, Barkın Kültürsay, Ahmet Berk Duman, Samet Solmaz, Büşra Sağdıç, Furkan Gençer, Murat Karaçam, Deniz Mutlu, Ali Karagöz; *İstanbul, Tunceli, Kocaeli, Bitlis, Türkiye, MN, USA*

►17 **Effects of Dapagliflozin on Left Atrial Ejection Force in Heart Failure with Preserved Ejection Fraction: DAPA-Left Atrial Ejection Force Trial**

Rupesh Agrawal, Jamal Yusuf, Ashish Kumar, Vimal Mehta Ankur Gautam, Mohit D. Gupta Jyotshnarani Sahu; *Delhi, India*

►27 **A Novel Electrocardiographic Index to Predict the Severity of Coronary Calcification**

Serkan Duyuler, Koray Arslan, Raif Can Karabulut, Atik Aksoy, Mustafa Dağlı, Pınar Türker Duyuler; *Ankara, Mardin, Türkiye*

►35 **Evaluation of Cardiac Findings in People With Human Immunodeficiency Virus**

Sevgi Özan Köse, Yalın Tolga Yaylalı, Yiğit Davutoğlu, Gürsel Şen, İbrahim Oğuz, Selda Sayın Kutlu; *Kars, Denizli, Isparta, Türkiye*

►44 **The Synergistic Relationship Between Erectile Dysfunction and Frontal QRS-T Angle in Predicting Coronary Artery Disease Severity: A Prospective Observational Study**

Pınar Özmen Yıldız, Mert Hamza Özbilen; *Adana, Türkiye*

CASE REPORT

►55 **ScienCrown Valve: A Novel Transcatheter Heart Valve for Concurrent Aortic and Mitral Valve-in-Valve Implantation in Bioprosthetic Degeneration**

Jian-Dong Ding, Yi-Lin Chen, Rong-Feng Xu, Xiao-Li Zhang, Qi-Tong Lu, Gen-Shan Ma; *Nanjing, China*

LETTER TO THE EDITOR

►59 **Rethinking Risk Stratification in Emergency Department Patients with Nonsustained Atrial Fibrillation**

Yalçın Gölçük; *Muğla, Türkiye*

LETTER TO THE EDITOR REPLY

►61 **Reply to Letter to the Editor: "Rethinking Risk Stratification in Emergency Department Patients with Nonsustained Atrial Fibrillation"**

Ece Yurtseven, Dilek Ural, Kurtuluş Karaüzüm, İrem Yılmaz, Yengi Umut Çelikyurt, Kaan Hancı, Müjdat Aktaş, Ümit Yaşar Sinan, Serdar Küçüköğlü, Ayşen Ağaçdiken Ağır; *İstanbul, Kocaeli, Türkiye*

LETTER TO THE EDITOR

►62 **Critical Appraisal of Caval Valve Implantation Procedure in 7 Cases of Torrential Tricuspid Regurgitation**

Salim Yaşar, Suat Görmel, Murat Çelik; *Ankara, Türkiye*

LETTER TO THE EDITOR REPLY

►64 **Reply to Letter to the Editor: "Critical Appraisal of Caval Valve Implantation Procedure in 7 Cases of Torrential Tricuspid Regurgitation"**

Hüseyin Bozbaş, Cem Barçın, Mohamed Asfour, Savaş A. Çelebi, Ersin Çam, Erdoğan İlkay; *Ankara, Türkiye*

LETTER TO THE EDITOR

►66 **Comments on "Evaluation of Whole Blood Viscosity to Predict Stent Restenosis"**

Hakan Süygün; *Karaman, Türkiye*

LETTER TO THE EDITOR REPLY

►68 **Reply to Letter to the Editor: "Comments on 'Evaluation of Whole Blood Viscosity to Predict Stent Restenosis'"**

Yunus Çalaplı; *Ankara, Türkiye*

REVIEWERS LIST

►70 **Acknowledgment to Our Reviewers 2025**

E-PAGE ORIGINAL IMAGES

►E-1 **Left Atrial Appendage Closure in a Hemophilia B Patient with Atrial Fibrillation**

Yunus Emre Özbebek, Ahmet Göktuğ Ertem; *Ankara, Türkiye*

►E-3 **Loeffler's Endocarditis Unveils Underlying Eosinophilic Granulomatosis With Polyangiitis**

Burcu Kodal, Tahir Bezgin, Metin Çağdaş, Aziz İnan Çelik; *Kocaeli, Türkiye*